

Idaho Broadband Advisory Board Meeting

Wednesday, May 14, 2025



Meeting Agenda

- **9:30 Call to Order**
 - Roll Call
 - Approval of 12/18/2024 Meeting Minutes
- **9:35 Board Chair & Vice Chair Selections**
- **9:45 Idaho Broadband Fund Update**
- **9:55 Capital Project Fund Update**
- **10:10 Idaho Bead Planning Grant Update**
- **10:20 Idaho BEAD Program Update**
 - Application Project Areas
 - Prequalification Phase
 - Initial Proposals Vol II Updates
 - Funding Application Guidelines
- **11:45 Next IBAB Meeting/Any New Business**





Board Chair and Vice Chair Selections



Idaho Broadband Fund Update

Krista Baker, State Broadband Project Manager

IDAHO BROADBAND FUND \$35M

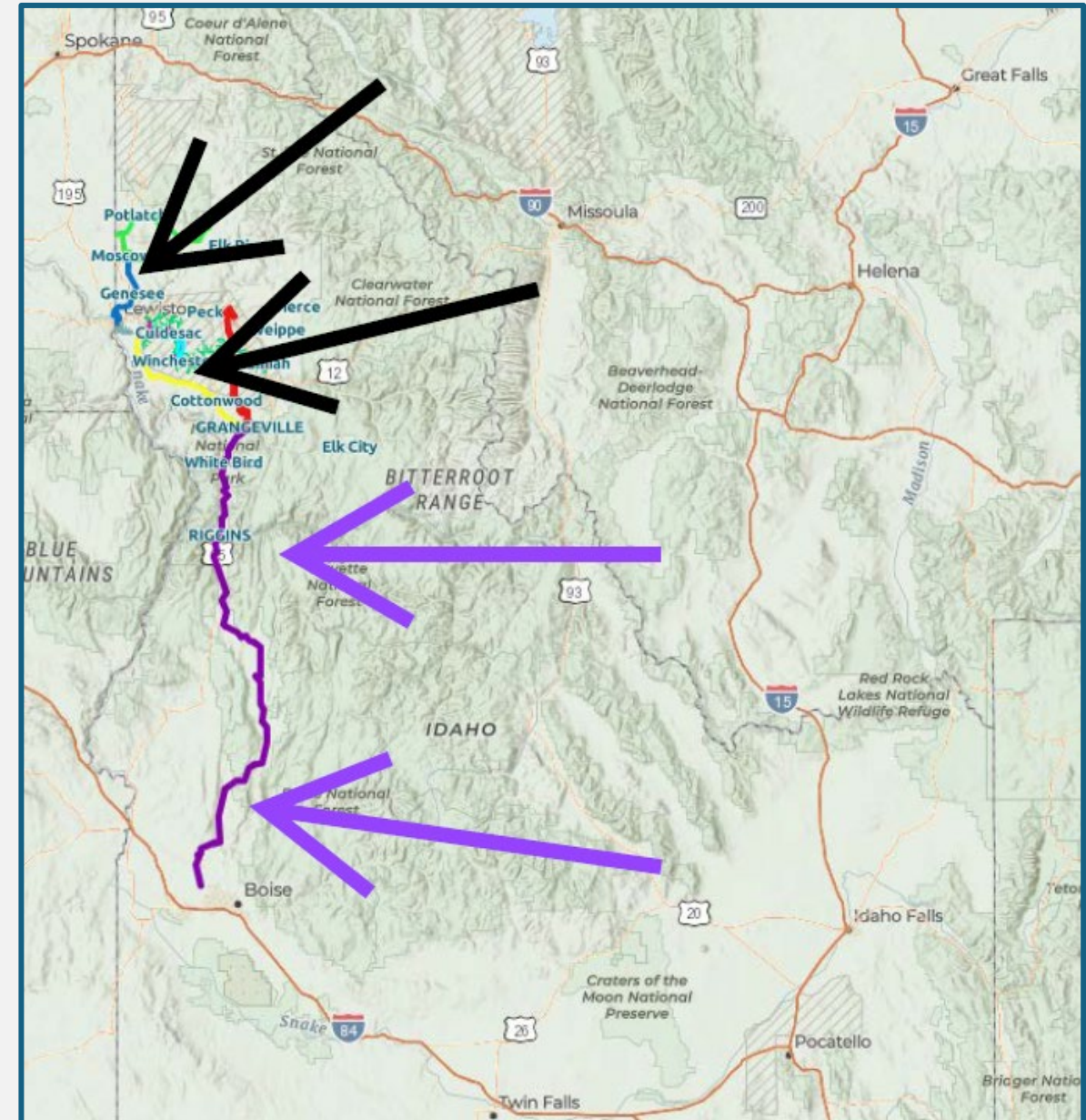
\$8.7M remaining in this fund

Port of Lewiston (\$6.3M)

- Moscow → Lewiston
- Lewiston → Grangeville

IIG/IRON (\$20M)

- Grangeville → Star



*2 major middle-mile projects connecting north
Idaho to south Idaho*

Port of Lewiston IBF Update

Design: *100% complete*

Permitting: *100% complete*

Materials: *RFP opened yesterday*

Construction: *RFP opened yesterday*

Timeline: *May 2027*



IIG/IRON IBF Update

Design: 97% complete

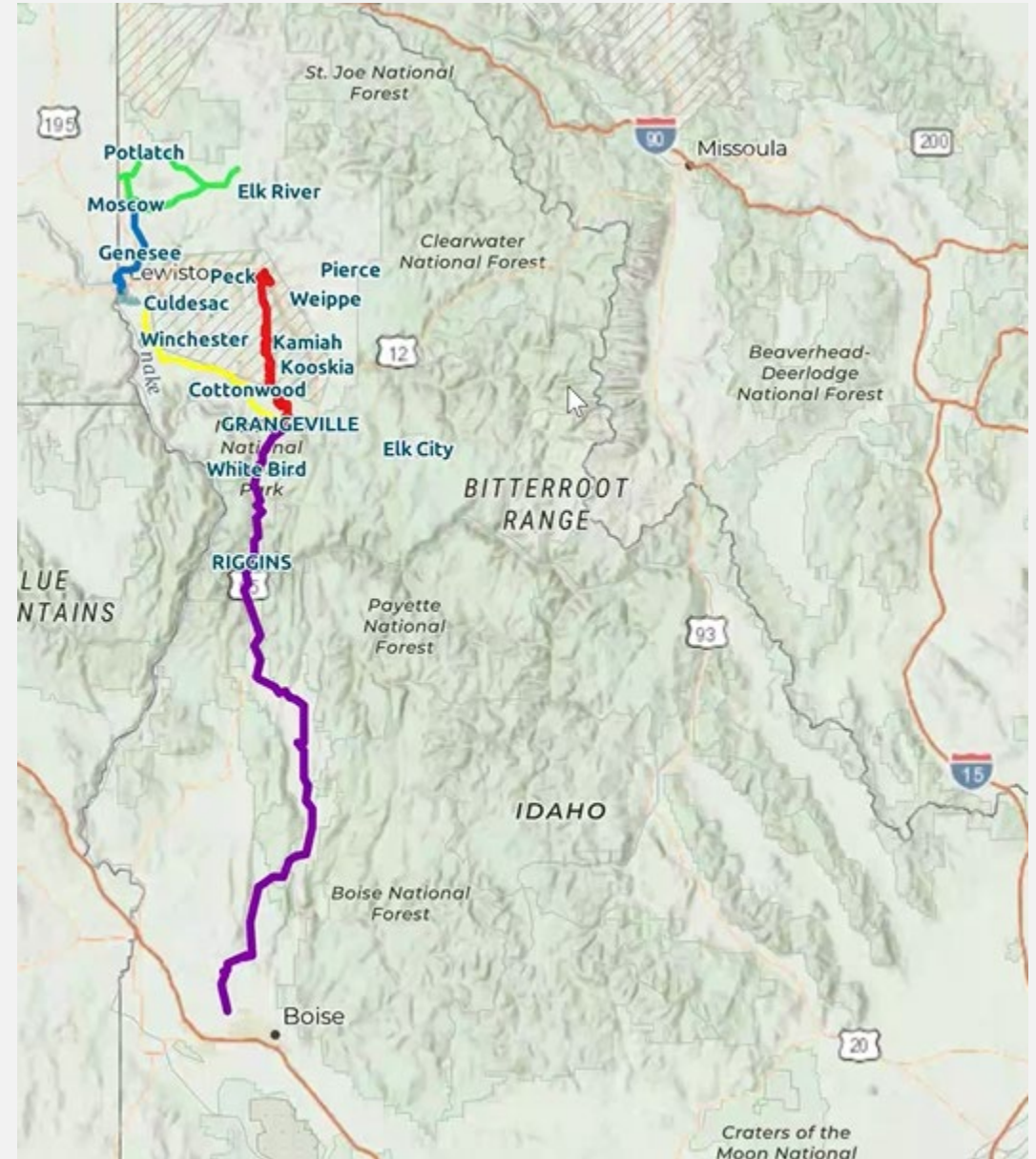
Permitting: 50% complete (*New Meadows to White Bird require geo-technical review*)

Materials: 100% ordered/purchased

3 Phases of Construction: *South to North*

Timeline: *May 2027*

Canal work was area of emphasis throughout the winter.





Idaho Capital Projects Fund Update

Alexis Malcomb, Commerce Grants and Contracts

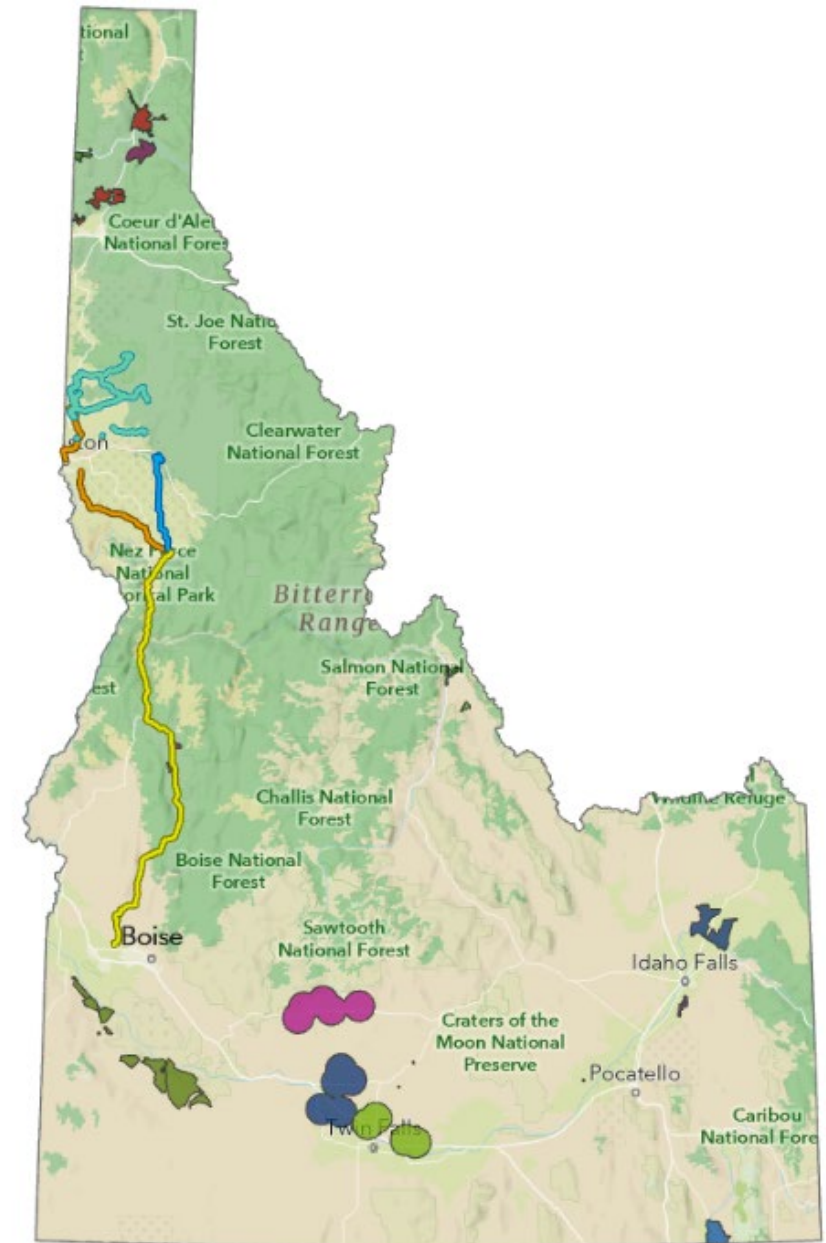
Krista Baker, State Broadband Project Manager

Kim Glineski, State Broadband Project Manager

Capital Projects Fund \$120M

18 Projects Funded - Connecting over 35,000 BSLs

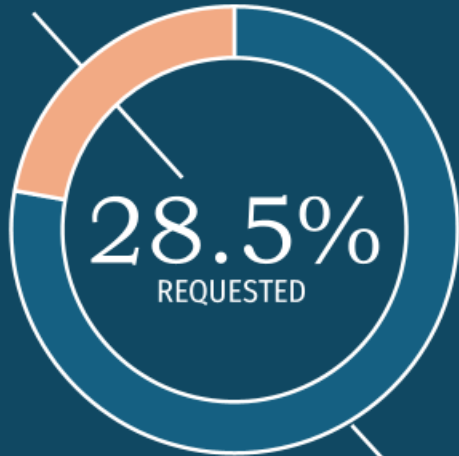
Project Name	Organization	Amount Awarded
Project Last Mile- Priest River & Oldtown	MiFiber	\$6,259,109.70
Bonner County – Sagle Fiber (FTTX) for speeds up to 2.5 Gbps	Kaniksu	\$2,527,975.69
State Hwy 54 Corridor Project	Intermax Networks	\$5,889,174.99
Hauser Lake Area Project	Intermax Networks	\$1,585,130.00
Selle Valley Project	Intermax Networks	\$6,315,211.28
Latah County Dark Fiber Network	Latah County	\$15,000,000.00
Aberdeen Fiber to the Premise	Ziply Fiber	\$2,306,353.00
Valley County Fiber to the Premise	Ziply Fiber	\$9,027,501.00
Orofino to Grangeville Fiber Optic Conduit Project	Idaho County	\$11,589,881.00
Camas County Wireless Fiber and Fiber to the Premises	Camas County	\$5,090,020.50
Gooding County Wireless Fiber and Middle Mile Fiber	Gooding County	\$7,509,334.00
Jerome County Fiber to the Premises & Fiber Fed Fixed Wireless.	Jerome County	\$10,838,021.50
Lincoln County, ID (LCID) Broadband Initiative- Phase 2- FTTP	Lincoln County	\$4,039,860.01
Salmon Idaho Hwys 93 North Fiber and Hwy 28 South Project	Custer Telephone Cooperative	\$3,399,900.00
City of Preston, City of Franklin and Surrounding Area	Comcast Cable	\$9,873,892.00
Madison County and FyberCom Fiber Initiative	Madison County	\$13,673,938.79
Taylor / Basalt Fiber Project	FyberCom	\$716,947.54
Owyhee County	Whitecloud Communications	\$4,357,749.00



\$120,000,000

CAPITAL PROJECTS FUND (CPF) INFRASTRUCTURE

\$34,238,313



\$85,761,687
REMAINING

\$48,776,869
MATCH

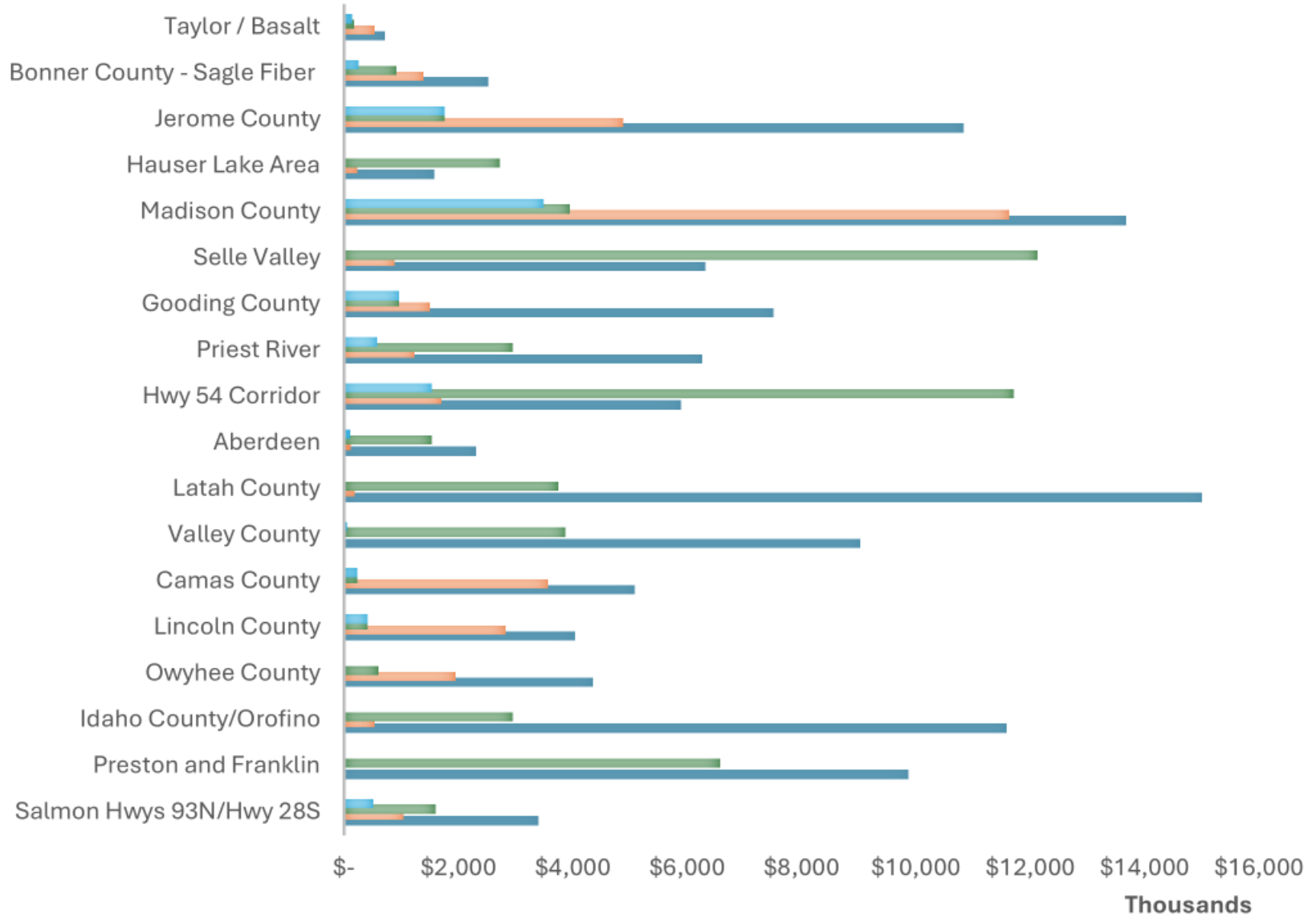


\$10,042,610
REMAINING

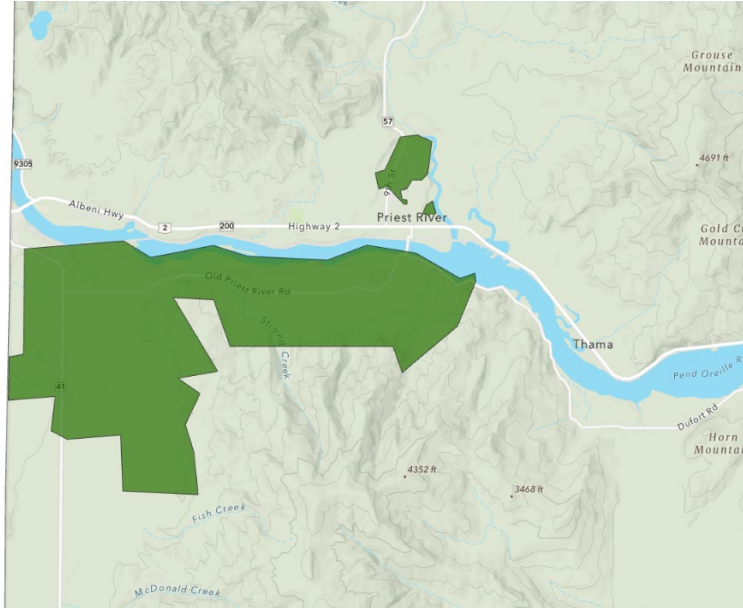
FUNDS REQUESTED & SUBMITTED MATCH

(INCLUDES PENDING REQUESTS)

Match Submitted Required Match Requested to Date Awarded

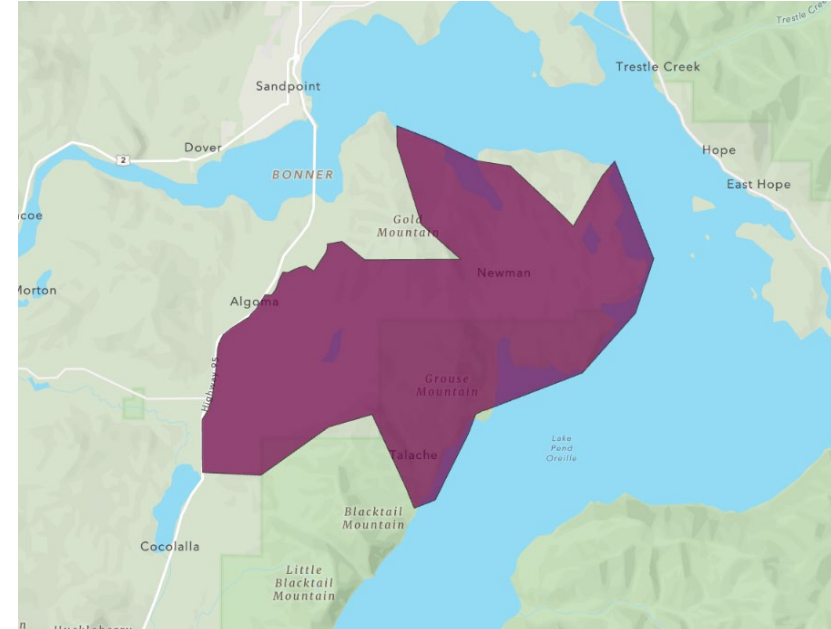


MiFiber (Priest River & Oldtown)



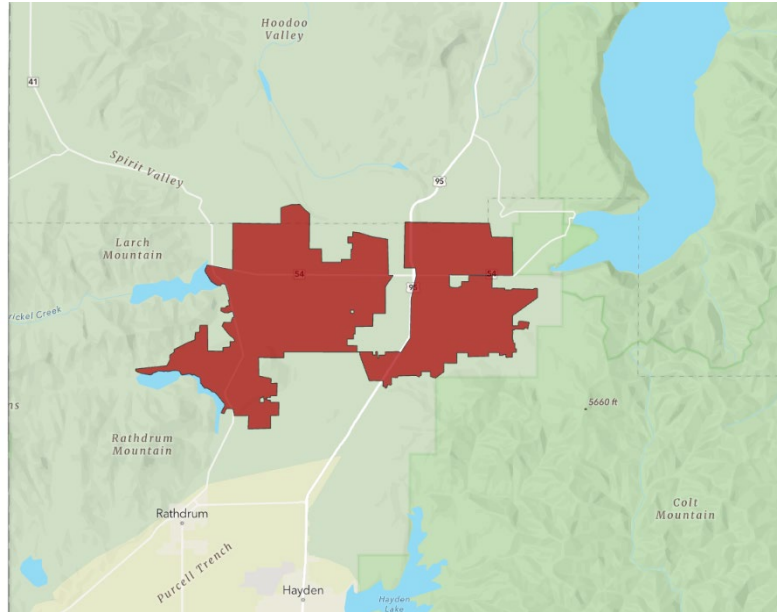
- North Pend Orielle River construction complete 2024
- Bonner County Winter Moratorium paused construction
- South side of river Design: 100% complete
- South side of river Permitting: 100% submitted, 40% approved/complete
- Construction: 25% complete

Kaniksu Internet (Sagle & Surrounding Area)



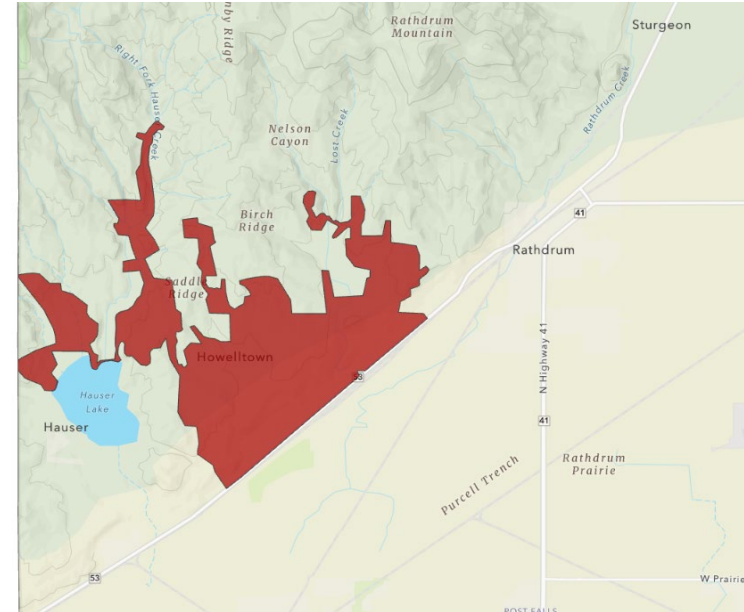
- Bonner County Winter Moratorium paused construction
- Design: 97% complete
- Permitting: 97% complete
- Materials: 100% purchased
- Construction: 35% complete

Intermax – Hwy 54 North of Rathdrum



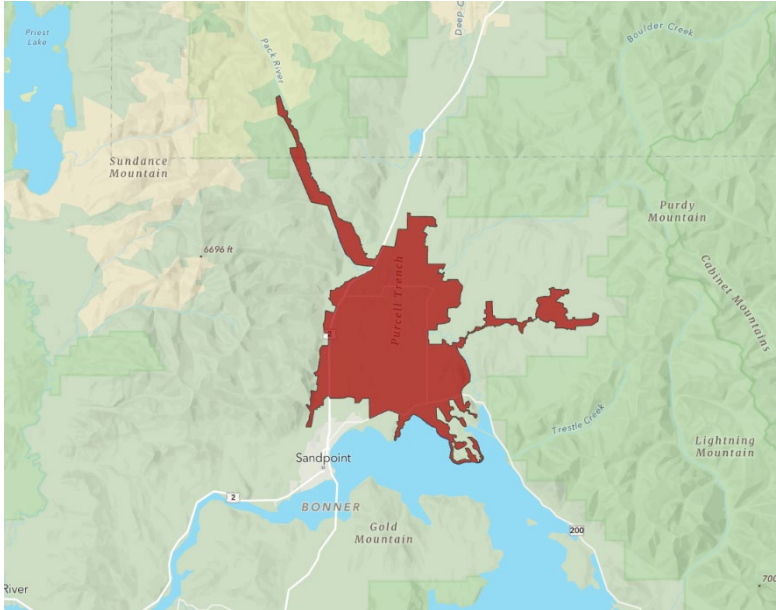
- Design: 95%
- Permitting: 70%
- Materials: 95%
- Construction: 45%

Intermax – Hauser Lake West of Rathdrum



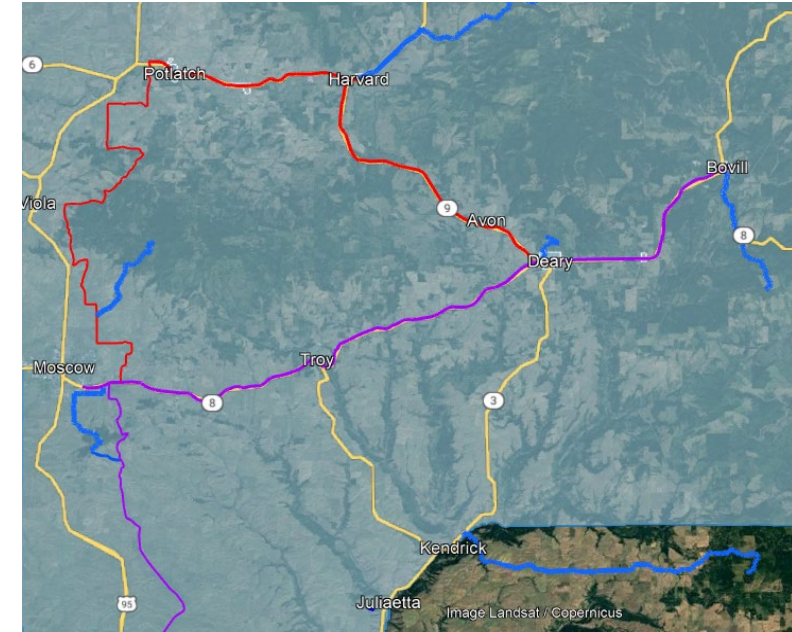
- Design: 75%
- Permitting: 75%
- Materials: 75%
- Construction: 50%

Intermax – Selle Valley North of Sandpoint



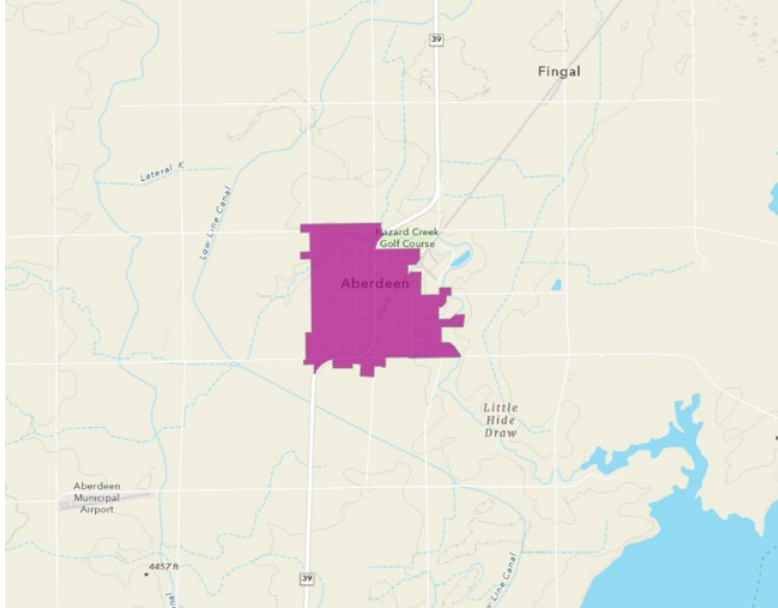
- Additional Environmental Review (located on wetlands)
- Design: 60%
- Permitting: 15%
- Materials: 50%
- Construction: 0%, June planned start

Latah County Dark Fiber Network



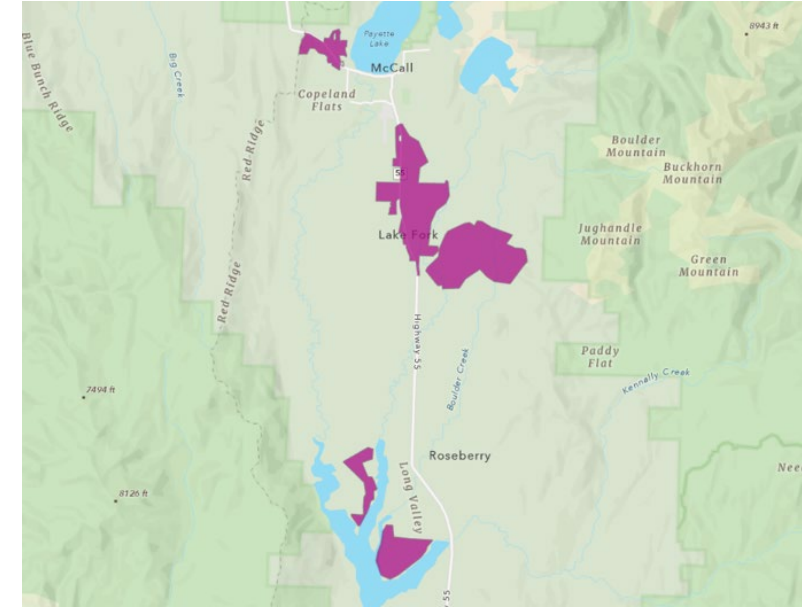
- Design: 75% complete
- Permitting: 25%
- Materials: RFP planned to open next week
- Construction: RFP scheduled to open beginning of June

Ziply – Aberdeen



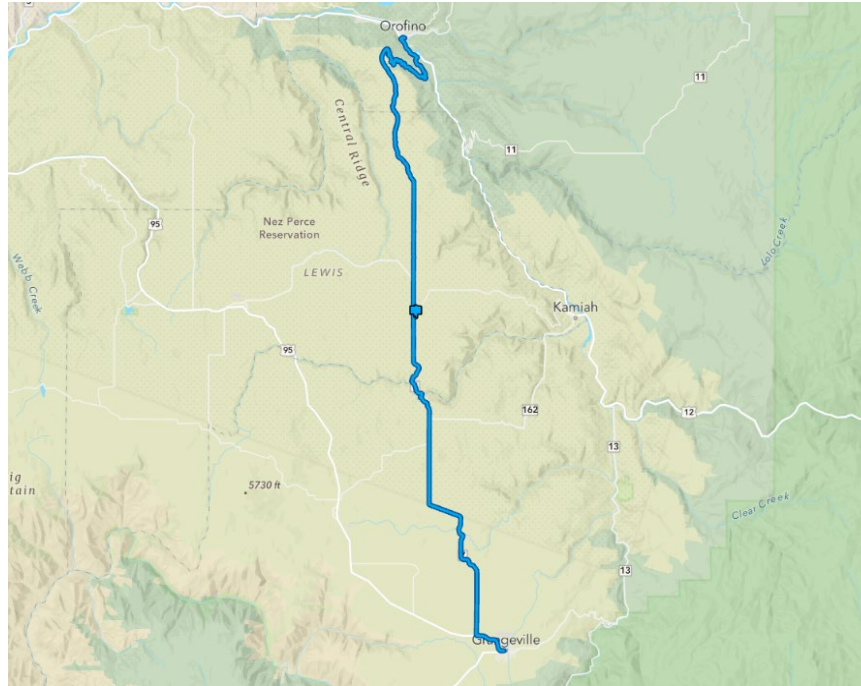
- Design: 95% complete
- Permitting: 95% complete
- Materials: 100% purchased
- Construction: 75% complete

Ziply – Valley County



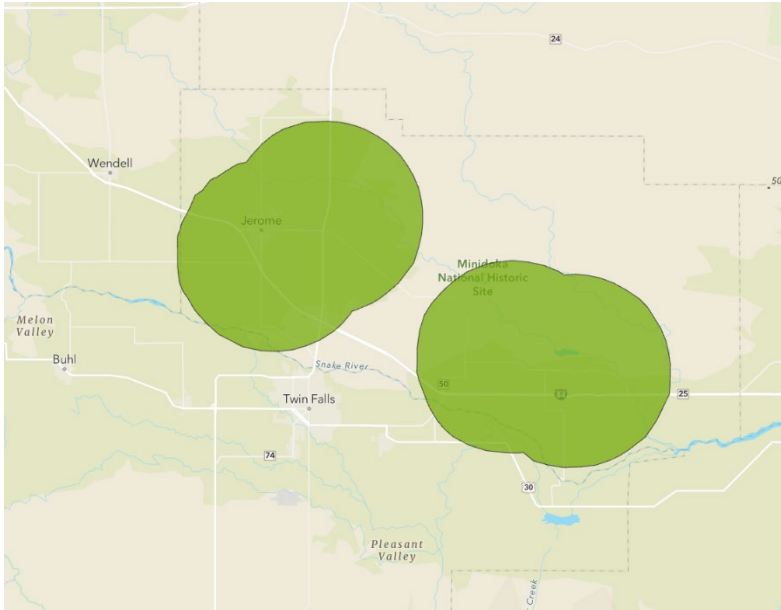
- Design: 100% complete
- Permitting:
 - County & State roads in progress
 - Pole attachment 15% complete
- Materials: 100% purchased
- Construction: 15% underway

Idaho County – District 2 Interoperability Governance Board: Clearwater, Lewis & Idaho County Middle-Mile; City of Nezperce Last Mile



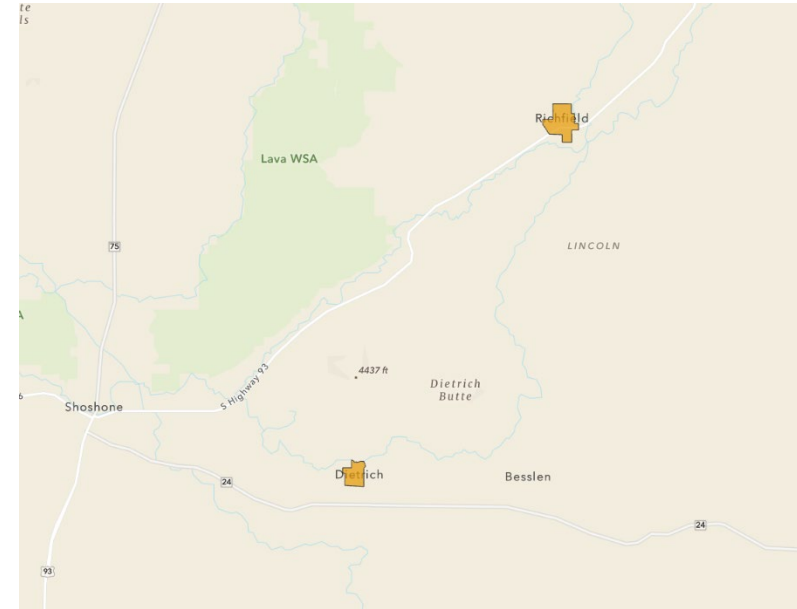
- Design: 95% complete
- Permitting:
 - Cultural/Environmental: 100% complete
 - ROW: 95% complete
- Construction & Materials: RFP to open June 3

Jerome County



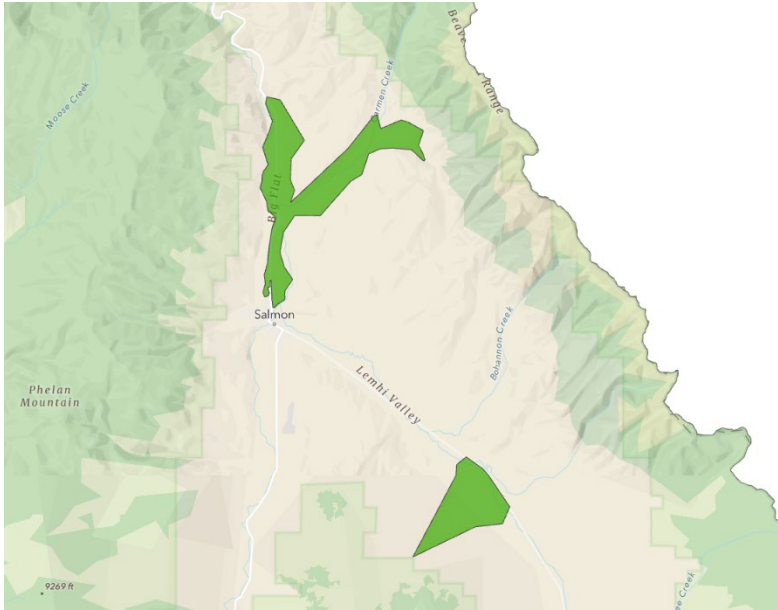
- Provider: ETS
- 2,989 Planned connections (2,928 underserved & 61 unserved)
- 45% Project Complete
- Currently finished with phase 2 engineering going into phase 3
- Conduit to the premise completed: 164
- Community dinner with over 200 in attendance and also going door to door promoting on new internet services for the community.

Lincoln County



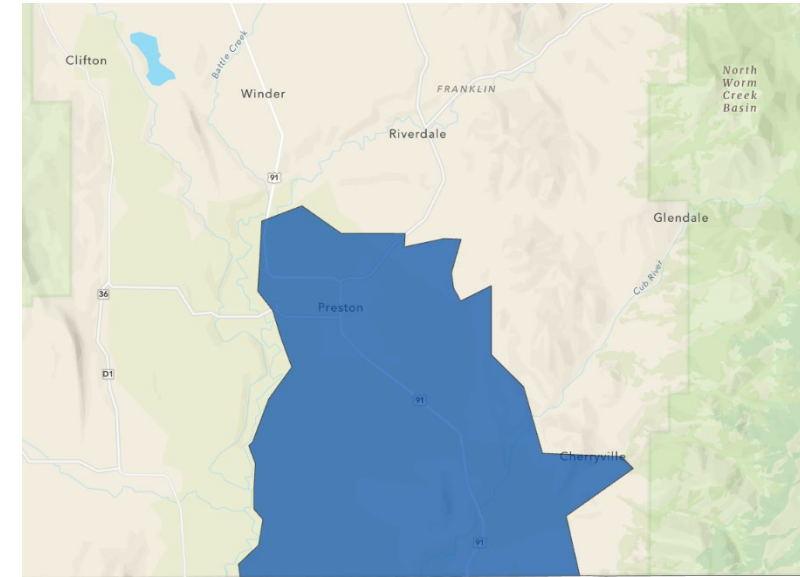
- Provider: ETS
- 294 Planned connections (290 underserved & 4 unserved)
- 90% Project Complete
- Currently finished phase 3 and going into phase 4
- 10 Miles of fiber installed and now ready to install router equipment in homes
- Fiber to the premise completed and accepted by property owners: 251

Salmon HWY93



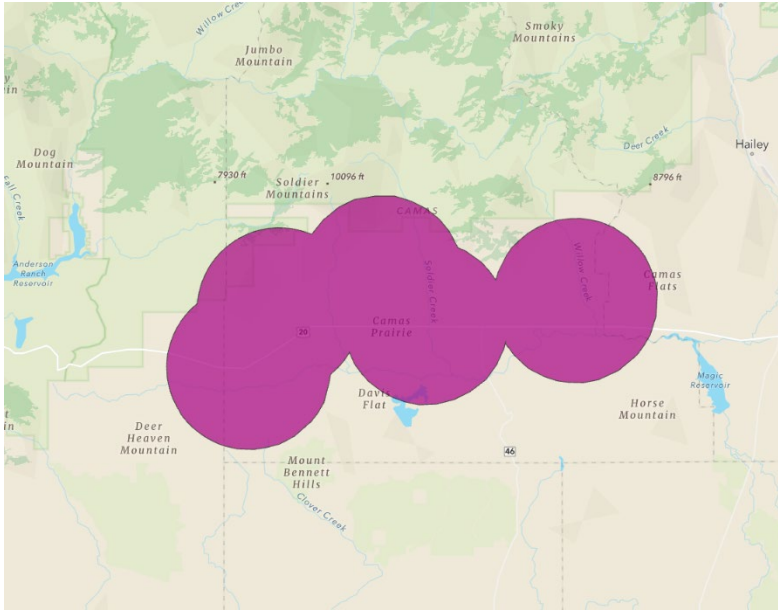
- Provider: Custer Telephone
- 359 Planned connections (337 underserved & 22 unserved)
- 20% Project complete
- 113 locations have access to 1G service

Preston & Franklin County



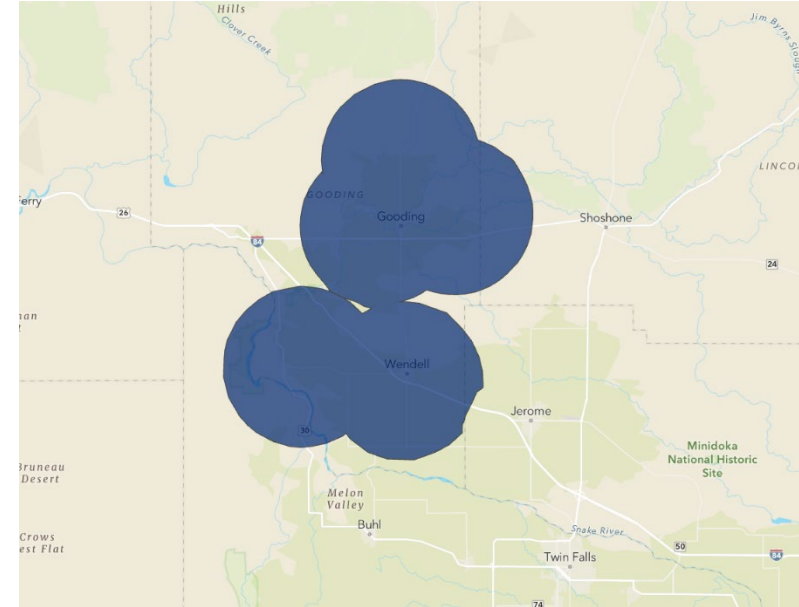
- Provider: Comcast
- 3,186 planned connections
- 2.8 miles of fiber deployed to date
- Area experiencing significant new development and construction activity
- Construction began in October 2024 but was paused due to the winter moratorium. Work resumed this spring, and the project remains on schedule for timely completion.

Camas County



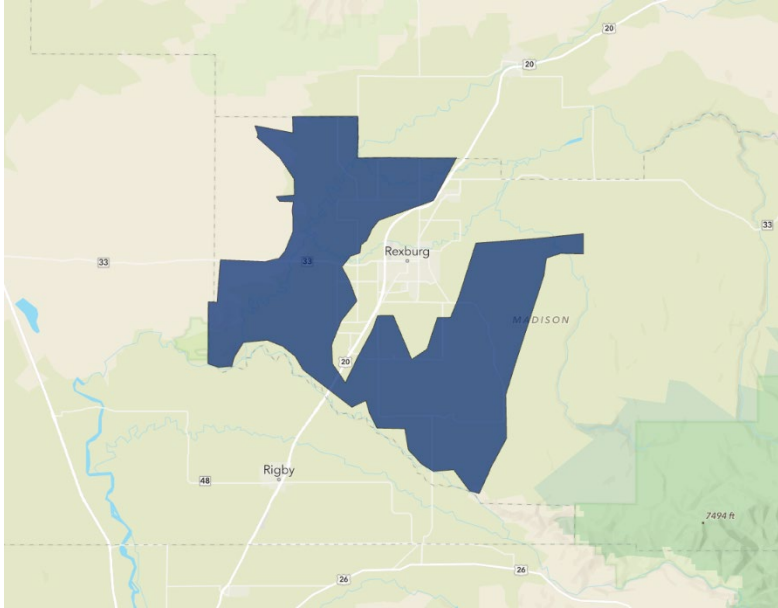
- Provider: ETS
- 863 Planned connections (786 underserved & 77 unserved)
- 70% Project complete
- Currently finished phase 3 and going into phase 4
- Fiber to the premise completed and accepted by property owners: 233
- ETS has had a big presence in the community attending local sporting events, fairs and going door to door marketing their new internet services

Gooding County



- Provider: ETS
- 2,576 Planned connections (2,542 underserved & 34 unserved)
- Completed Phase 2 Engineering and moving into phase 3 Construction Phase
- Community outreach with encompassing meetings, project notifications and marketing strategies to keep community informed and involved.

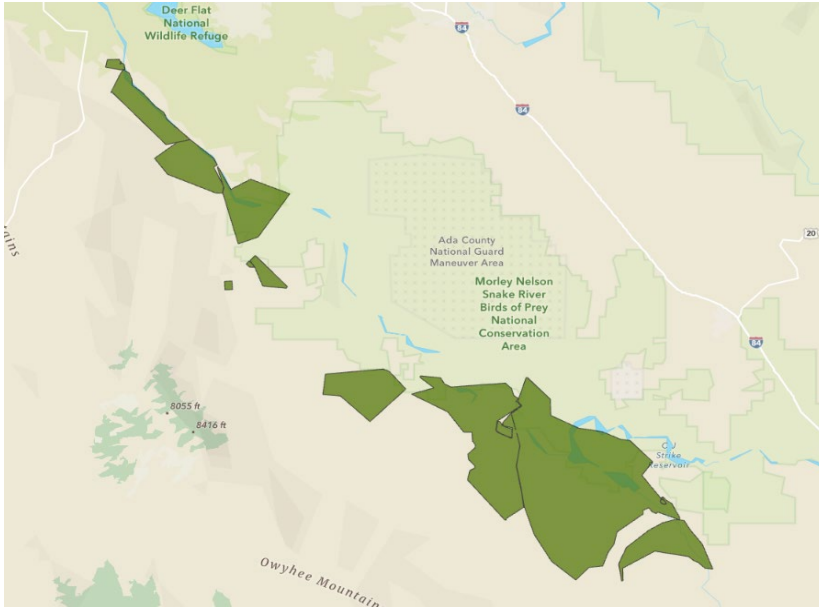
Madison County



- Provider: FyberCom
- 2,988 Planned connections (2,988 underserved)
- 75% Project completion
- 245 Miles of fiber installed
- 385 Locations connected

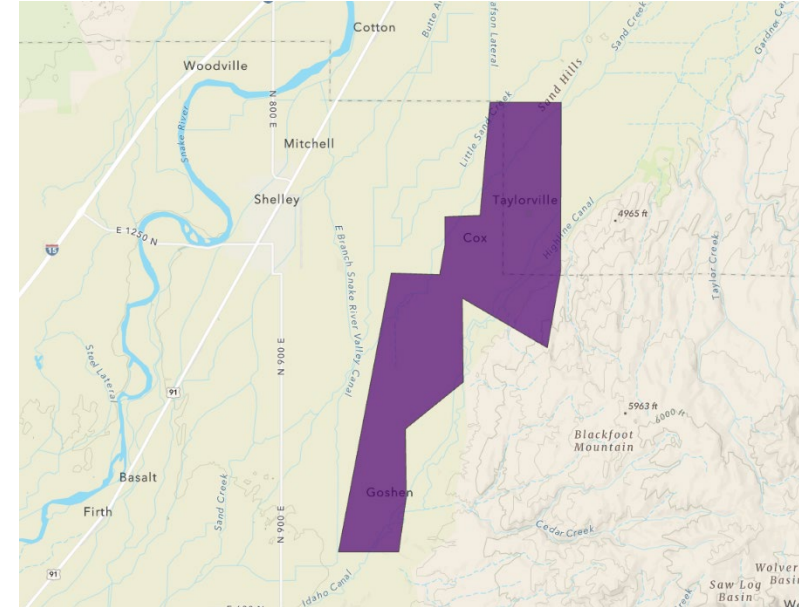
<https://youtu.be/1OwlnjG1Q6g>

Owyhee County



- Provider: Whitecloud Communications
- 1,597 Planned connections (424 underserved & 1,173 unserved)
- 20% Project complete
- Engineering completed and working on installation of conduit and handholes

Taylor Basalt



- Provider: FyberCom
- 651 Planned connections (651 underserved)
- 70% Project Completion
- 33.5 Miles of fiber installed
- 91 Locations connected



Idaho BEAD Planning Grant Update

Alexis Malcomb, Commerce Grants and Contracts

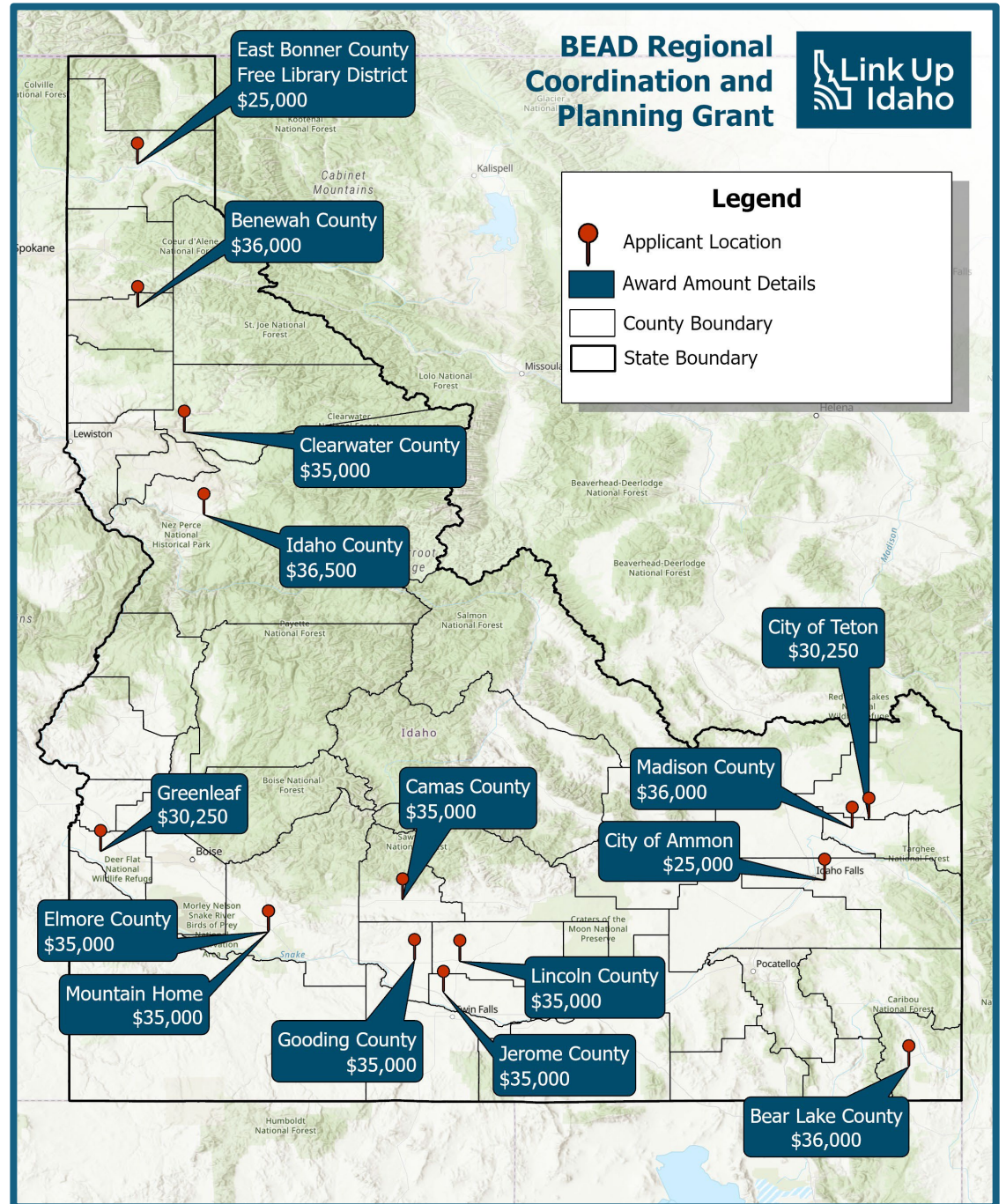
Krista Baker, State Broadband Project Manager

Kim Glineski, State Broadband Project Manager

Overview

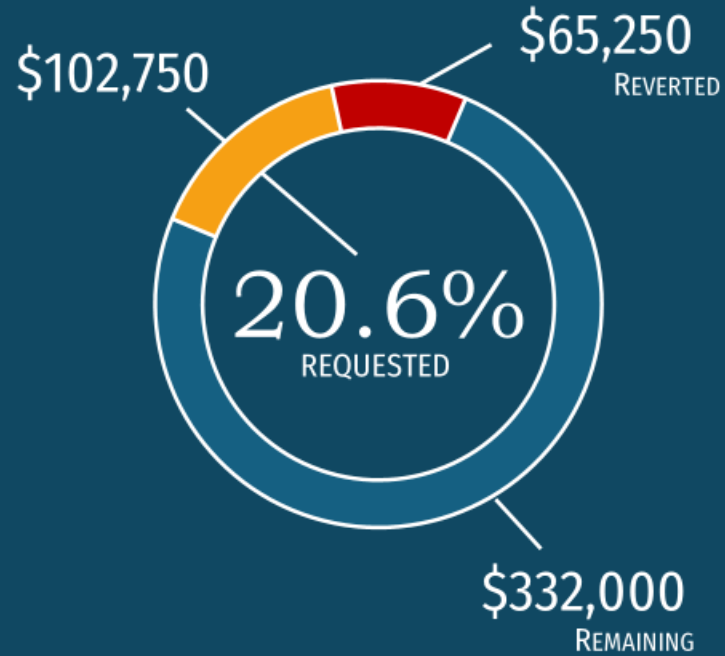
Cities, counties and state entities or agencies could apply for funding to:

- Develop and support Broadband Action Teams or Broadband Coalitions.
- Support local-level community broadband leaders, and education and outreach efforts.
- Plan and strategize to improve the community's distance learning, telehealth and telework opportunities.



\$500,000

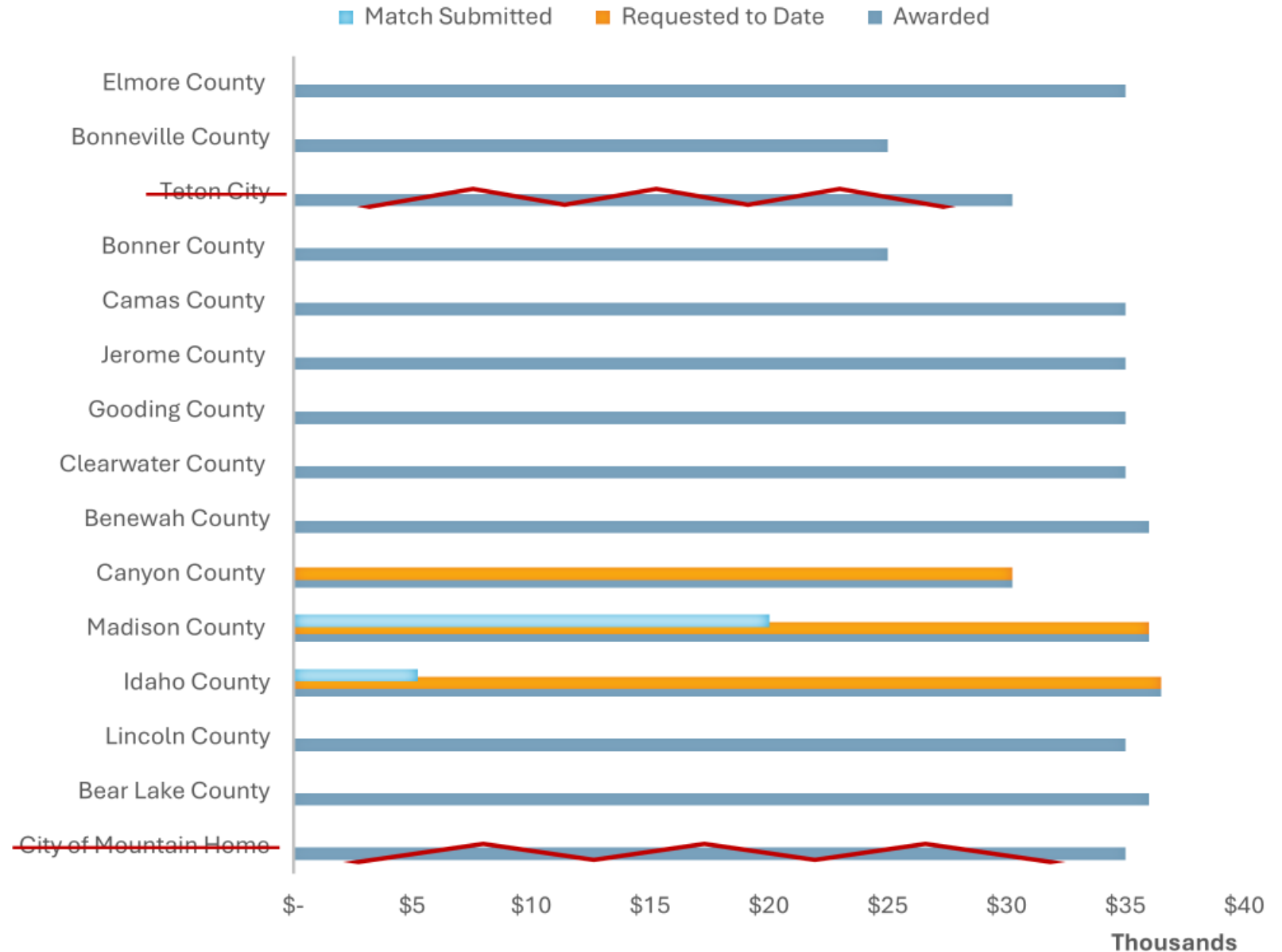
BEAD REGIONAL COORDINATION AND PLANNING FUNDS



- \$25,274 in Match Submitted
- 3 Close Outs
- 2 Canceled Agreements

FUNDS REQUESTED & SUBMITTED MATCH

(INCLUDES PENDING REQUESTS)



Program Updates

Clearwater County

- Data Collection & Needs Assessment completed, Stakeholder Engagement conducted, and Strategic Planning was completed

Idaho County

- Developed a BAT made up of key stakeholders including representatives from: School Districts, City Employees and Elected Officials, Emergency Services personnel, ISP's, Engineers & Consultants
- They developed a Broadband Strategic Plan specific to Idaho County's needs and have a RFI opportunity open which can be found on the Idaho County website

Benewah County

- Completed all planning activities
- Developed a BAT
- Identified ISPs to align with Benewah's needs and completed a Comprehensive Strategic Plan to set the foundation to meet their needs

Program Updates

Madison County

- Project completed February 2025.
- Madison County partnered with Fybercom to form the Madison County Broadband Action Team (MCBAT), launching marketing campaigns, educational programs, and town halls to raise awareness about digital literacy & the benefits of broadband.

Camas, Elmore County, Jerome County, Gooding County & Lincoln County

- Currently developing a regional plan to connect the entire area with reliable internet service. This includes extensive engineering work and coordination meetings to design a cost-effective solution that serves all Broadband Serviceable Locations (BSLs) in the region. The planning phase is expected to wrap up within the next 45 days.

City of Greenleaf

- Project completed February 2025.
- See Regional Broadband Action Plan included in your packet.

City of Ammon

- Rural Bonneville County Broadband Action Plan completed and included in packet.
- Just working on project close out report and documents.

Canceled Contracts

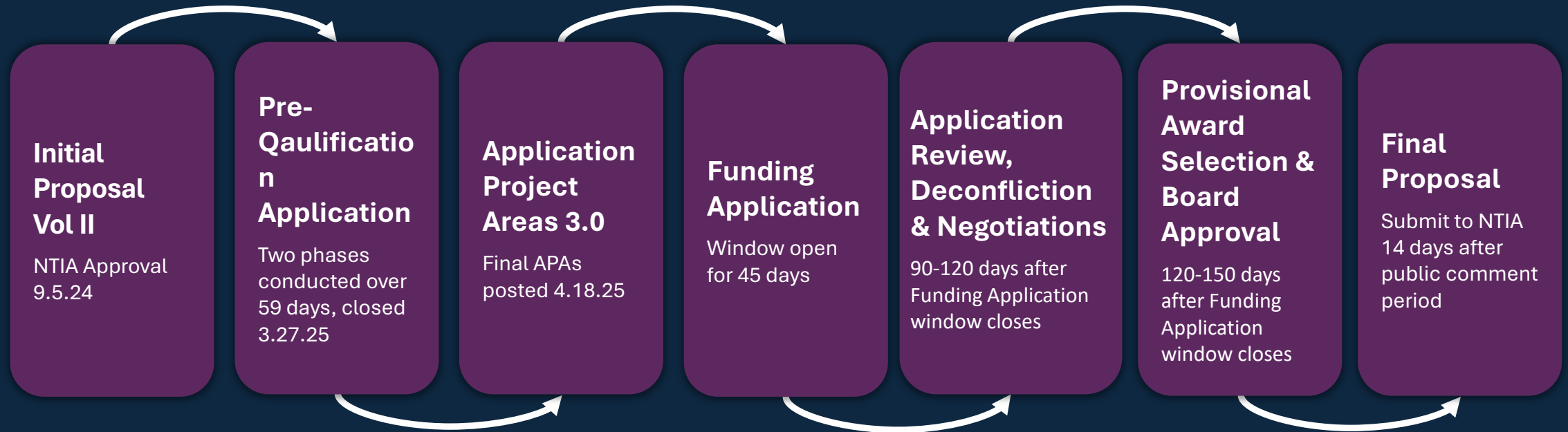
- City of Mountain Home
- City of Teton



Idaho BEAD Program Update

Ramón Hobdey-Sánchez, State Broadband Director

Idaho BEAD Subgrantee Selection Timeline





BEAD Application Project Areas

Jackie Reader & Sarah Lawrence, GIS Data Scientists,
Information Technology Services & Idaho Office of Broadband



BEAD Prequalification Phase

Beth Crow, Michael Baker International

Idaho BEAD Application

Prequalification

Environmental and
Historic Preservation
(EHP) and Build America
Buy America (BABA)
compliance

Financial Capability

Managerial Capability

Technical Capability

Compliance with
Applicable Laws

Operational Capability

Information on
Ownership

Information on Other
Public Funding

Labor Standards and
Protection

Certification of
Nondiscrimination and
Civil Rights

BEAD Application

Certification of
compliance with BEAD
requirements –
Cybersecurity & Supply
Chain Risk Management

Proposed Project
Description

Proposed Project Budget

Community Outreach
and Local Engagement
around Proposed Project

Proposed Project
Technical Documents

Low-Cost & Middle-Class
Service Plans

Proposed Project Natural
Hazard Risk Mitigation

Proposed Project EHP &
BABA details

Proposed Project
Technical Documents

Proposed Project Labor
Practices and Workforce
Readiness

Prequalification Core Components

Operational Capability

To determine **operational capability**, the application asks questions like:

- *Do you currently provide broadband service?*
- *What technologies do you use (e.g., fiber, fixed wireless)?*
- *Have you successfully completed similar infrastructure projects?*

These questions help assess whether the applicant has the technical systems, supply chain processes, and field experience necessary to deploy and operate broadband networks.

Managerial Experience

For **managerial capability**, the focus is leadership & oversight. Questions like:

- *Who are your executive leaders and what is their relevant experience?*
- *How do you manage large-scale projects?*
- *Have you managed federally funded projects before?*

This section ensures that the organization has the strategic leadership and governance to execute and maintain the project responsibly.

Financial Strength

Financial capability is evaluated through questions like:

- *Can you provide audited financial statements from the past 2 years?*
- *Will you secure access to capital or lines of credit to support upfront costs?*
- *Have you defaulted on any public funding obligations in the past?*

These questions assess whether the applicant is financially solvent and capable of sustaining broadband operations long-term without defaulting on obligations.

BEAD Prequalification Applications

Applicants must demonstrate **financial, managerial, operational, and technical capabilities** in addition to compliance with required standards and laws, as required by BEAD NOFO

45 applications submitted through two rounds of the prequalification application process

Comprehensively reviewed & cured all submissions in accordance with current NTIA requirements

43

Applicants Passed

- *24 with no further information needed*
- *15 with audited financials due no later than 21 days after BEAD application close*
- *4 provisionally passed*

BEAD Prequalification Approved Applicants

Airbridge Broadband	EntryPoint Networks Inc.	Port of Lewiston
All West Communications Inc.	ETS	Project Mutual Telephone Cooperative Assoc Inc.
Amazon Kuiper Commercial Services LLC	Farmers Mutual Telephone Co.	Rally Networks
Anthem Broadband	Fatbeam LLC	RTI (Rural Telecom Inc.)
ATC Communications Inc	FyberCom	Shoshone Bannock Tribes
Blackfoot (formerly Fremont Telcom Co.)	IBT Group USA	Shoshone Paiute Tribes
Blackfoot Communications Inc	Inland Cellular	Silver Star Communications
Charter Spectrum	Intermax Networks	SpaceX
Coeur d'Alene Tribe	Kaniksu	Vickery IT LLC
Concept Communications/CoreFiber dba MiFiber	Latah County	Whitecloud Communications
Cox Communications	Midvale Telephone Co	Wi-Fiber Inc
Custer Telephone Cooperative Inc	Millennium Networks LLC	Ziplay Fiber Northwest LLC*
Direct Communications Rockland Inc.	Mud Lake Telephone Cooperative Assoc Inc.	Ziplay Fiber of Idaho LLC*
EL Internet Northwest	Nez Perce Tribe	Ziplay Fiber Pacific LLC*
		Ziplay Wireless LLC*

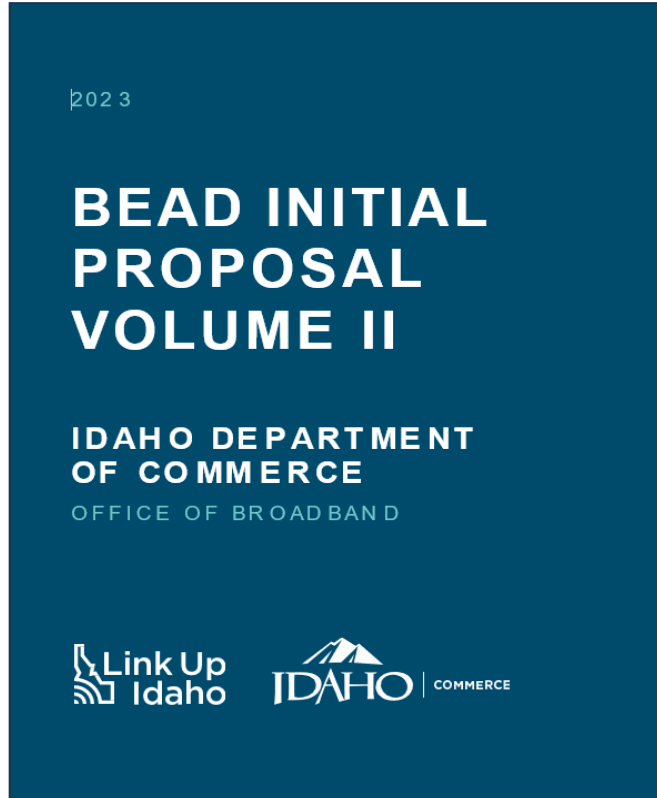
**Provisional approval is granted to applicants who have demonstrated substantial compliance with the program's requirements, with only minor conditions remaining to be fulfilled for full approval*



BEAD Initial Proposal Volume II Updates

Ramón Hobdey-Sánchez, State Broadband Director

Purpose of Updates



- Incorporation of Public or Stakeholder Feedback
- Clarifying or Expanding Program Details
- Correcting Errors or Omissions (Technical Corrections)

Policy/Process Updates

	Topic	Vol II Update
1	Subdividing Tribal Reservations into Multiple APAs <i>Section 2.4, Page 37 and Section 2.4.6, Page 53</i>	Tribal project areas may be a single reservation-wide APA or consist of multiple APAs by applying a census block clustering method.
2	Low-cost AND middle-class affordability: <i>Section 2.12.a, Page 107 and Section 2.13, Page 111</i>	The price identified by the applicant may be indexed to the CPI, as outlined by the U.S. Bureau of Labor Statistics. The requirement that annual price increases not exceed more than 4% has been removed.
3	Performance benchmark on low-cost plans: <i>Section 2.12.b, Page 107</i>	Removed performance benchmark aligning with FCC speeds threshold and simply lock in at 100/20Mbps.

Policy/Process Updates

4

Professional Engineering License.
Open to out-of-state licensure.
Section 2.4.13, Page 70

7

Prequalification Application Scoring Clarification. Pass/Fail.
Page 38, Section 2.4. Subsection 5.4

5

Scoring Matrix: Affordability under Primary Criteria on the FTTH end-to-end scoring matrix. There should be a line worth 12.5pts for “Monthly service cost 1Gbps/1Gbps \$70.00-\$79.99.” See FTTH end-to-end scoring matrix

8

Legal Citations.
Section 2.4.1, Pages 33-34.

6

Multiple APAs within one application, and multiple applicant applications per APA.
Sections 2.4.1 and 2.4.2, Pages 46-48

9

Subgrantee Financials: For Pro Forma forecasts, change from 3yrs to 10yrs.
Section 2.4.11, Page 63

10

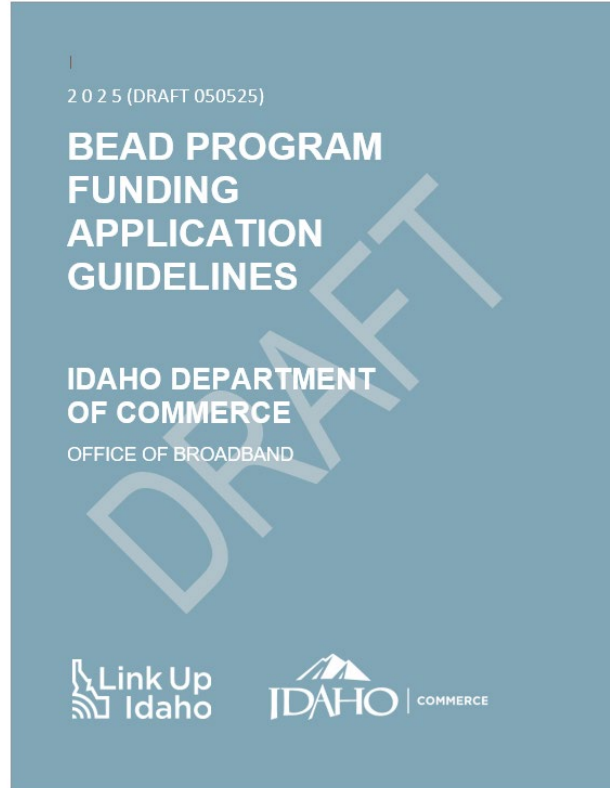
Funding Application Curing Days.
Section 2.4, Subsections 5.72 and 5.8, Page 45-46



BEAD Funding Application Guidelines

Ramón Hobdey-Sánchez, State Broadband Director
Beth Crow, Michael Baker International

Application Guidelines



The Guidelines:

- *Explain application requirements*
- *Detail evaluation and scoring criteria*
- *Ensure regulatory and policy compliance*
- *Reduce applicant errors and improve quality*
- *Support a smooth review process*

Idaho BEAD Application

The application is divided into 11 sections, which are assigned scores based on IOB's primary goals and accompanying objectives to address the requirements of:

- Closing the digital divide in Idaho
- Addressing deployment and access
- Affordability and adoption issues
- Enhancing economic growth, digital skills, and job creation

Guidance Examples:

Allowing applicants to **identify cost-driver BSLs** and request ability to not include those, subject to IOB review

Allowing one application for **multiple Application Project Areas**, including noncontiguous areas

Audited Financials, Tribal Consent, Letter of Credit, Performance Bonds

Further clarification and additional criteria of the **matching funds scoring and ladder**, including treatment of high-cost waiver BSLs

Allowing applicants to submit projects with **mixed technologies**

Project Budget Feasibilities/ Specifics

Wrap Up

- Next IBAB Meeting
- New Business



Thank you.

