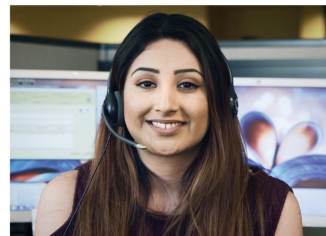
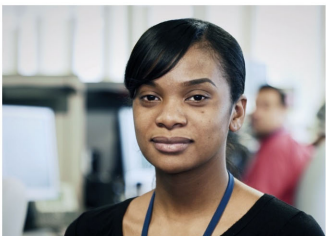




PacifiCorp's Joint Use Administration Dec 2024





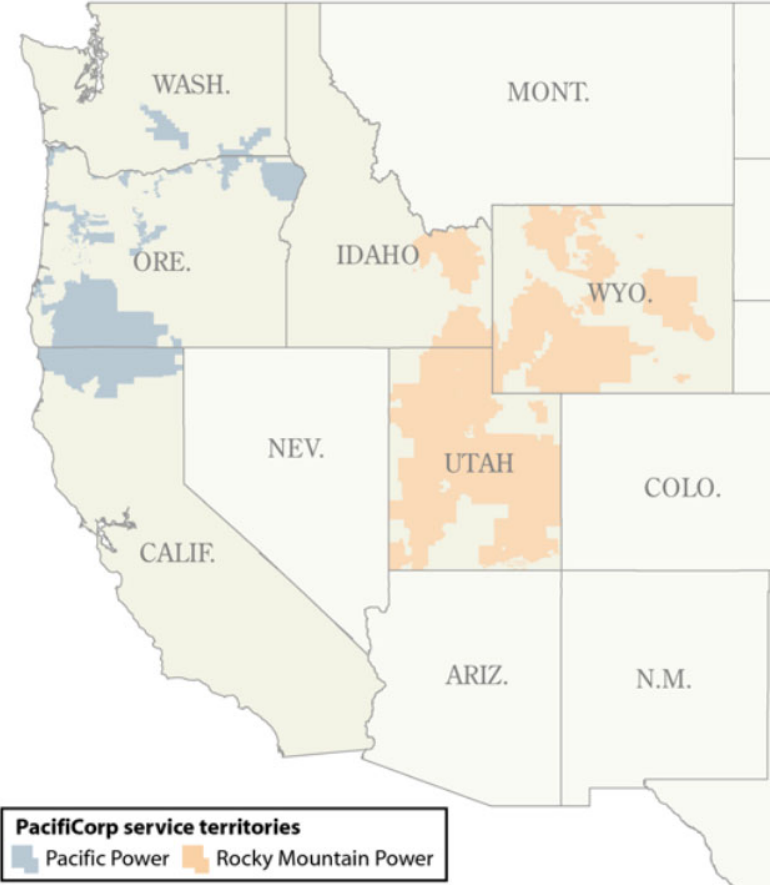
PacifiCorp Joint Use Administration

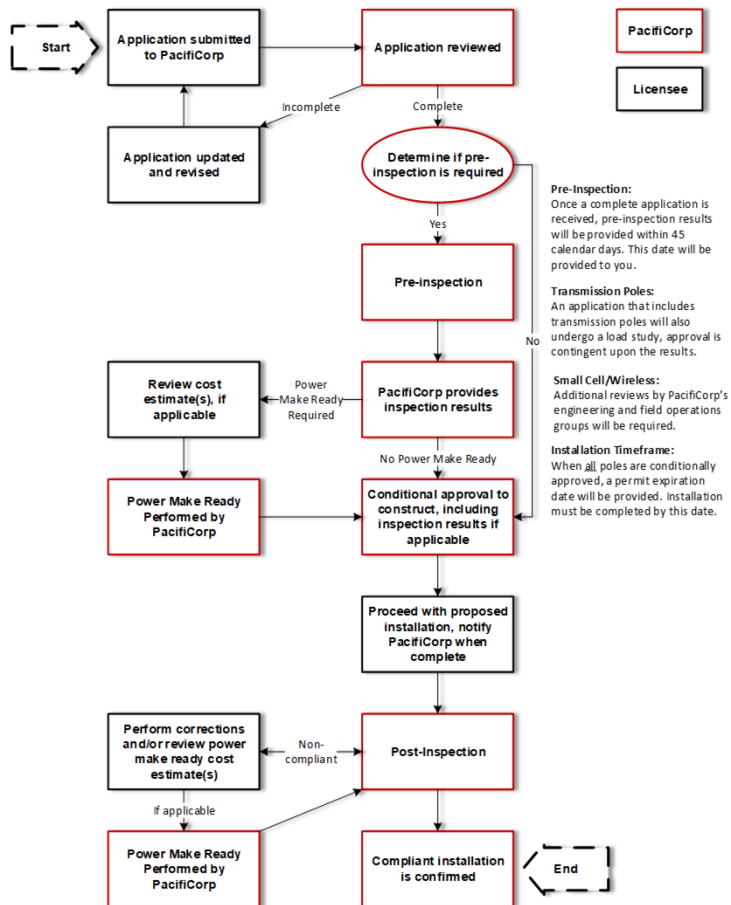
“The Joint Use Administration team is accountable for all administrative and policy activity in support of Rocky Mountain Power and Pacific Power for third party pole attachments.”

- 1,146,034 distribution poles
- 166,954 transmission structures
- JU attachments: ~914,461

IDAHO STATS (2023):

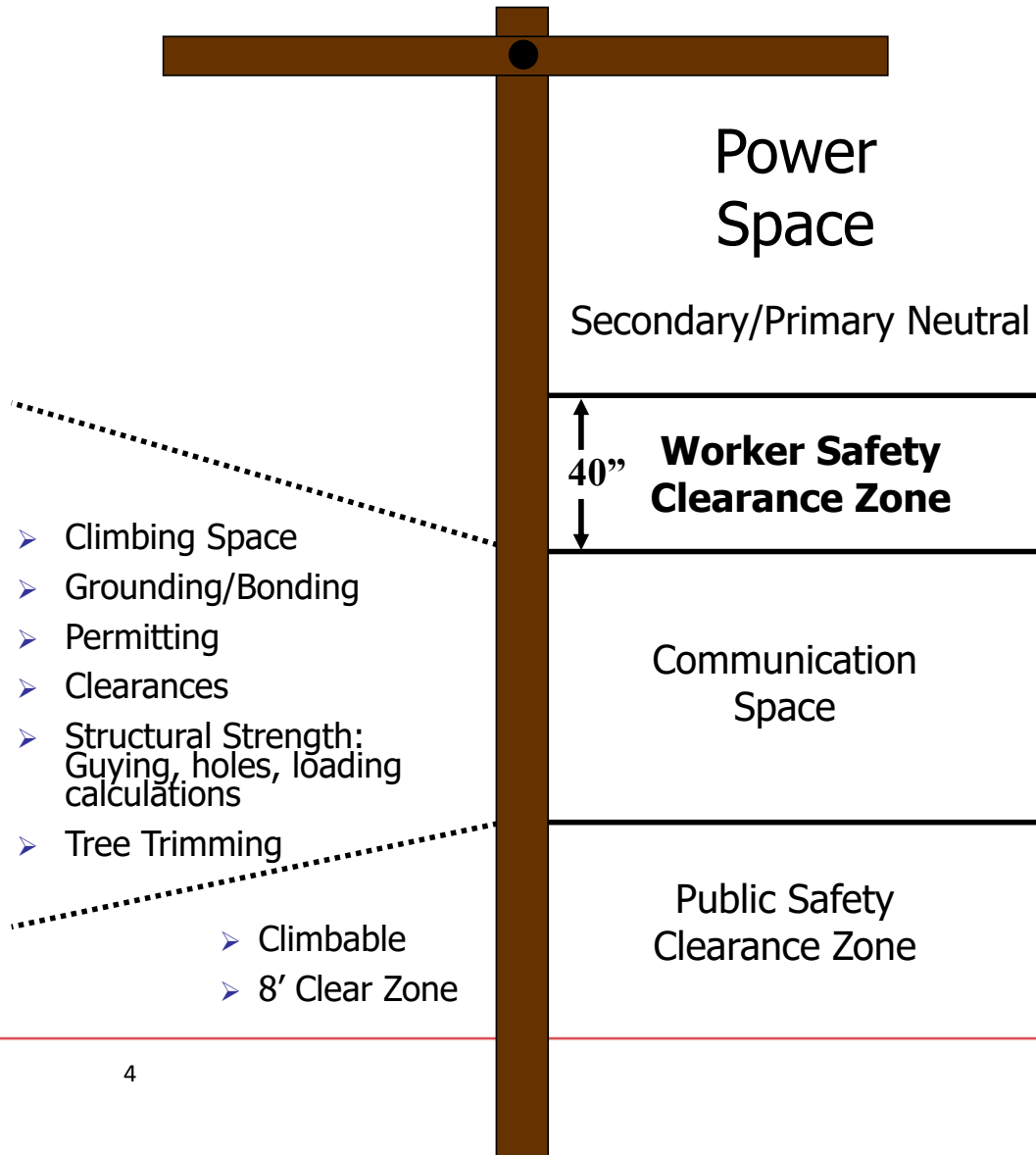
- ✓ 4 districts (Montpelier, Shelley, Preston, Rexburg)
- ✓ 22,676 transmission poles
- ✓ 97,904 distribution poles
- ✓ 16 contracts
- ✓ 18,592 attachments





PacifiCorp's Application Process

1. Contract Execution
2. Application Submission – Per pole application fee
 - A. Pre-Inspections – per pole inspection fee
 - B. Make-Ready Work – actual costs
 - i. Communications
 - ii. Power
 - C. Transmission – load study fees
3. Permit Granted, Applicant Construction – Pole Rent
4. Post-Inspection



Avoiding Delays

1. ID Pole Attachment Rules, safety 1st and foremost
2. Pre-planning
 - a. Pre-fielding, purposeful pole selection; feasible route
 - b. Pole owners
 - ✓ Pole Attachment Contracts
 - c. Franchise agreements/rights of way
 - d. Engineering review
3. Project Management
4. Licensee Construction, safety compliance
5. Maintenance, corrective maintenance, emergency management

Questions?





PacifiCorp Contact Information

Lisa Walker, Joint Use Director,
lisa.walker@pacificorp.com

Diana Winchester, Contracts Manager,
jointusecontracts@pacificorp.com

Siu Kee Wong, Applications Manager,
jointuse@pacificorp.com

Tim Solomon, Commercial Accounts and Community
Relations Director, timothy.solomon@pacificorp.com