

ITD Broadband Update

September 23, 2021



YOUR *Safety* • • • ► YOUR *Mobility* • • • ► YOUR *Economic Opportunity*

Agenda

- Supporting Broadband in Idaho
- DIG ONCE
- Potential Solutions
- Rulemaking Comments & Topics
- Broadband Advisory Board Input



Supporting Broadband in Idaho

- ITD owns and manages the Right-of-Way (ROW)
- Utilities need to use ROW
- ITD wants to ensure ROW for current and future use
- Help expand broadband infrastructure throughout the state



DIG ONCE

- Rights-of-Way are a limited resource with high demand from utilities
- Challenging construction areas
- Safety

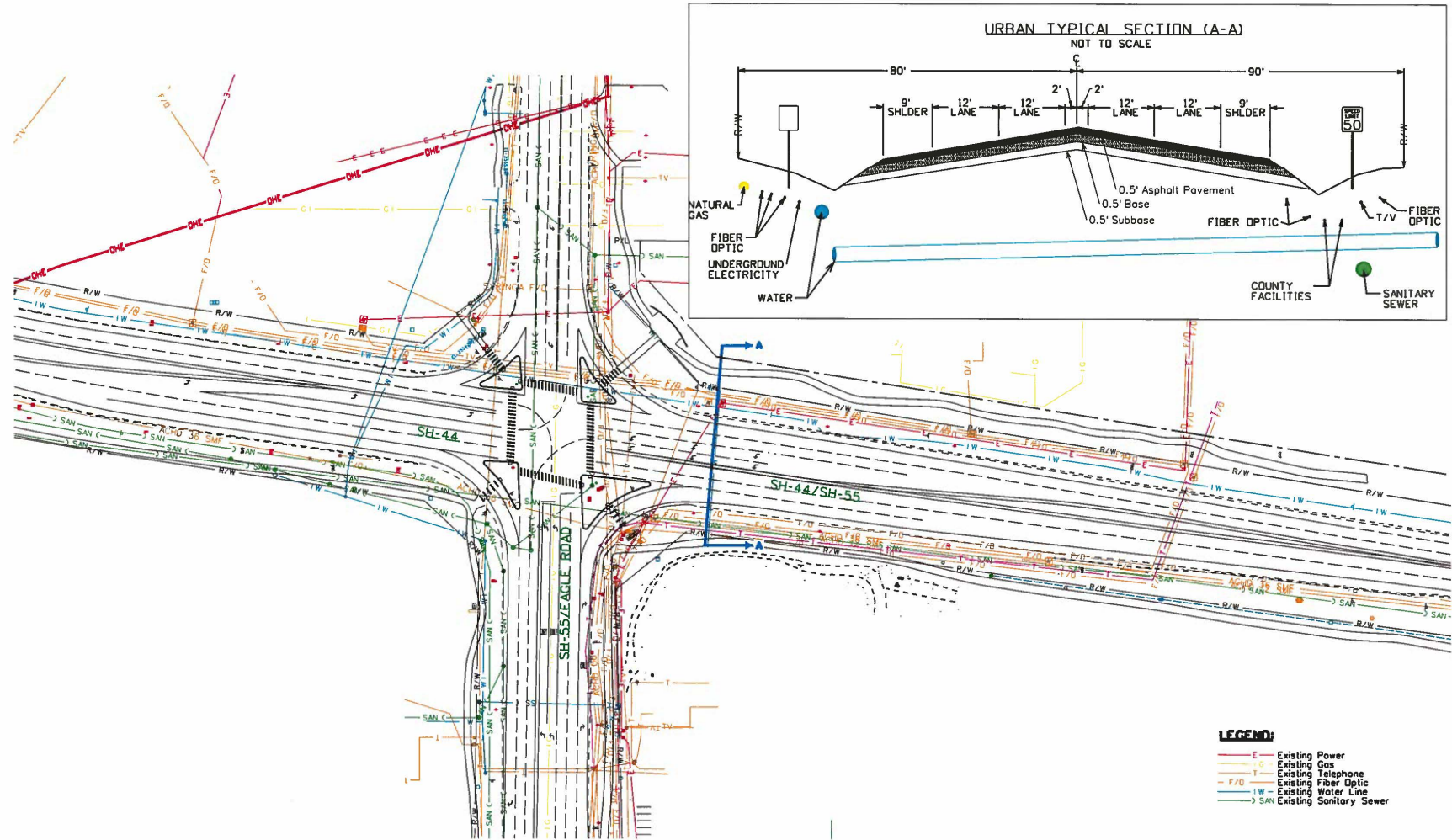


District 2 – US-95, Culdesac Canyon



Utilities in the ROW

TYPICAL URBAN UTILITIES



Potential Solutions

- Rulemaking to allow access now and in the future
- Outreach to Providers
- ITD proactive conduit installation during construction
- Grant Provisions

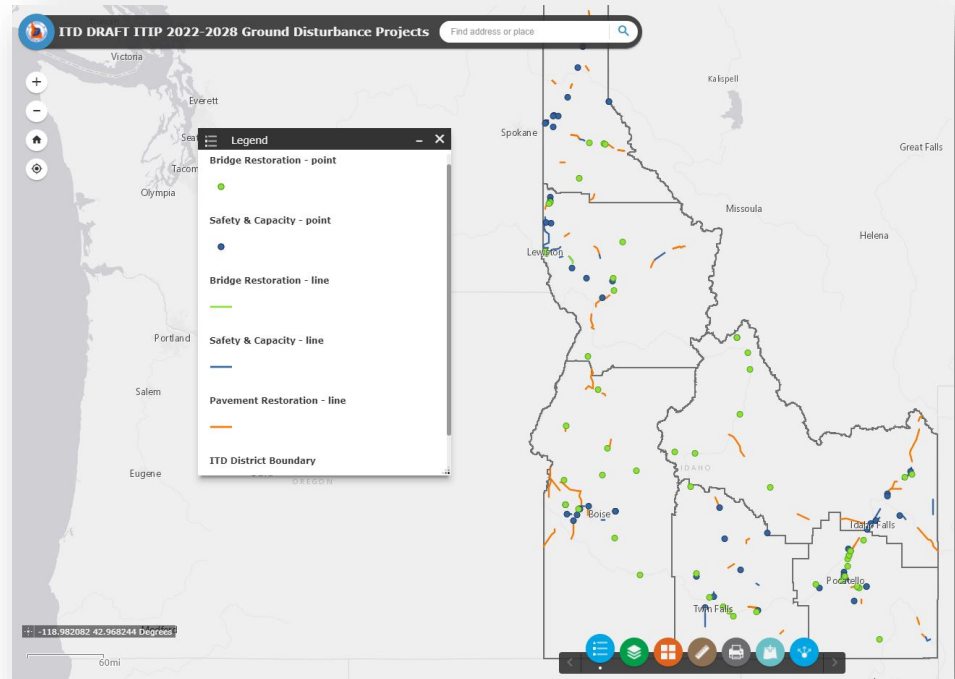


District 2 – US-95, Culdesac Canyon



Outreach & Coordination

- Provide advanced notification of transportation improvement projects
- Expanded coordination with Dept. of Commerce
- Coordinate statewide telecom & broadband plans to minimize repeated excavations



Next Steps

- Who owns the conduit
- Who manages the conduit
- How would ITD participate in a future state conduit and fiber exchange registry
- Consider stakeholder comments and inputs in ITD's utility accommodation rulemaking



Public Comment Topics

- Exempt from controls
- Concerns of Rural Providers
- Competition
- Cost Savings Opportunities
- Effects on Other Utility Services



Public Comment Topics (cont.)

- Federal Rules and Regulations
- Utility vs. Provider Definitions
- Inner-ducts & Vaults
- Alternative broadband conduit installation methods



Broadband Advisory Board Input

- In support of DIG ONCE the Advisory Board might consider the installation of additional conduits with grants
- Request Advisory Board input on ITD's proposed utility accommodation rulemaking concepts



Questions / Comments



<https://itd.idaho.gov/rulemaking>

