













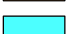


# Infrastructure Resource Guide 2022

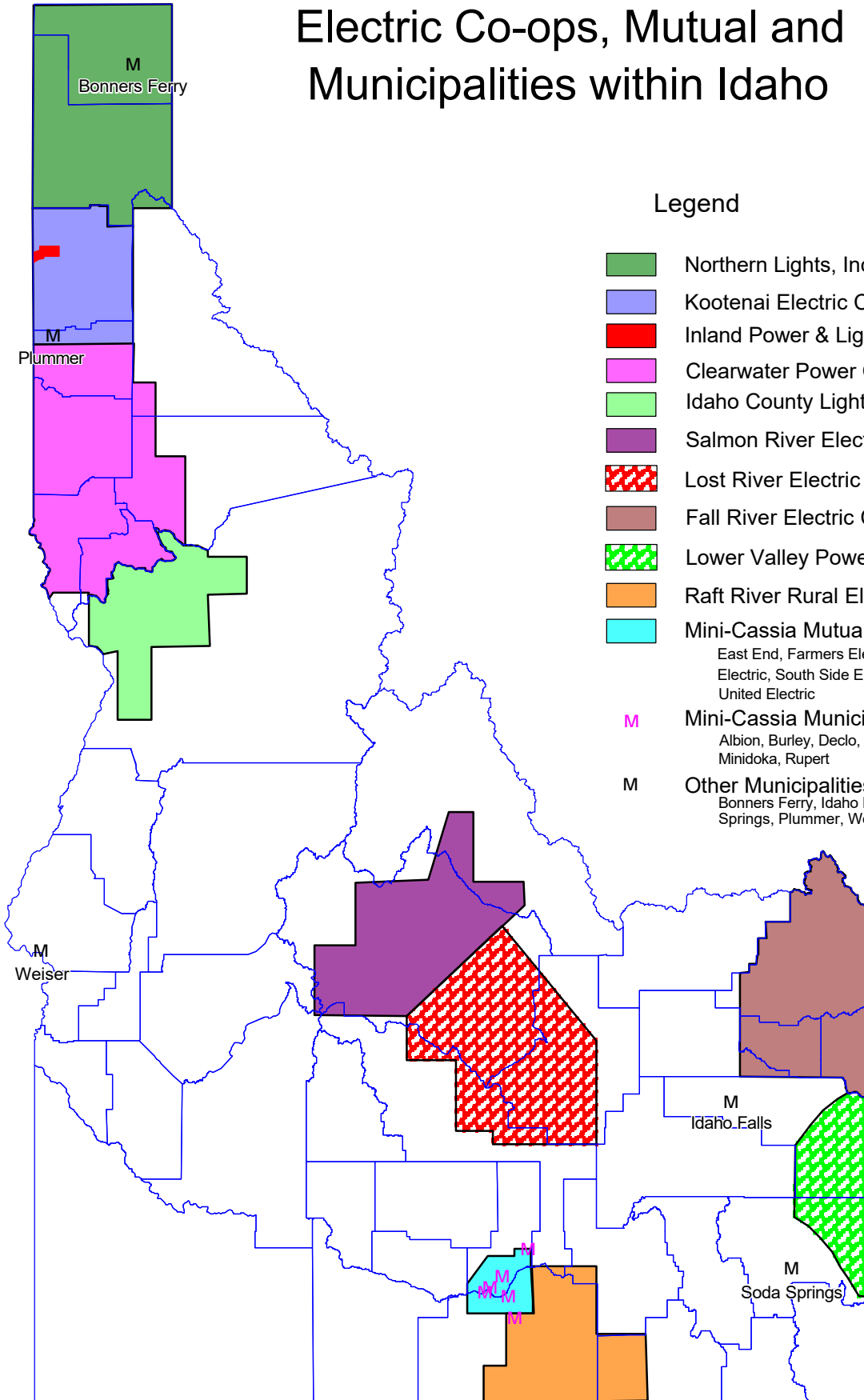
# Table of Contents

Electric Co-Ops Mutual and Municipalities within Idaho	3
Service Areas of Investor Owned Electric Utilities in Idaho	4
Idaho Power Directory	5 - 6
Idaho Telephone Exchanges and Company Areas Map	7
Idaho Telephone Exchange Directory	8 - 9
Idaho Public Airports Map	10
Idaho Airport Directory	11 - 16
Idaho State Highway System	17
Idaho Highway Directory	18 - 20
Idaho Railroads Map	21
Idaho Rail Directory	22
Idaho Higher Education Map	23
Idaho Higher Education Institutions Directory	24 - 25
Idaho Census Results	26
Idaho County Map	27
Idaho Relief Map	28
Idaho Topographical Map	29

# Electric Co-ops, Mutual and Municipalities within Idaho

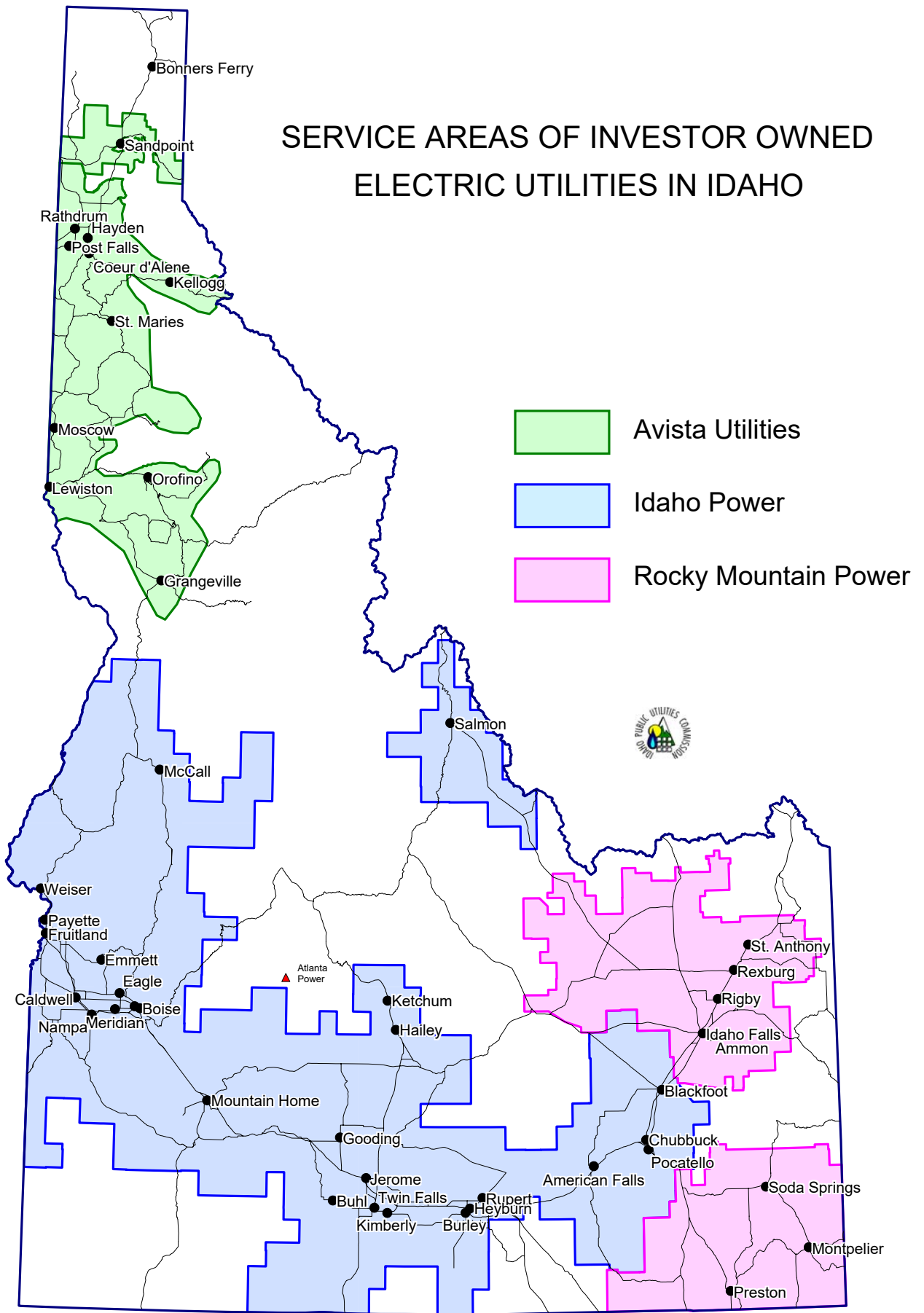
## Legend

-  Northern Lights, Inc.
-  Kootenai Electric Co-op, Inc.
-  Inland Power & Light
-  Clearwater Power Company
-  Idaho County Light & Power Co-op
-  Salmon River Electric Co-op
-  Lost River Electric Co-op, Inc.
-  Fall River Electric Co-op
-  Lower Valley Power & Light Co.
-  Raft River Rural Electric Co-op, Inc.
-  Mini-Cassia Mutuals & Co-ops  
East End, Farmers Electric, Riverside Electric, South Side Electric, United Electric
-  Mini-Cassia Municipalities  
Albion, Burley, Declo, Heyburn, Minidoka, Rupert
-  Other Municipalities  
Bonners Ferry, Idaho Falls, Soda Springs, Plummer, Weiser





# SERVICE AREAS OF INVESTOR OWNED ELECTRIC UTILITIES IN IDAHO



# Idaho Power Directory

## Investor Owned Electric Utilities

<p><b>Avista Utilities</b>  P.O. Box 3727  Spokane, WA 99220-0001  800-227-9187  <a href="http://www.myavista.com/">www.myavista.com/</a></p> <p>Area Served: Northern Idaho, including: Sandpoint, Post Falls, Coeur D'Alene, Moscow, Grangeville and Lewiston.</p>	<p><b>Rocky Mountain Power</b>  201 South Main St. Suite 2300  Salt Lake City, UT 84111  888-221-7070  <a href="http://www.rockymountainpower.net">www.rockymountainpower.net</a></p> <p>Area Served: Eastern Idaho including: Rexburg, Idaho Falls, Ammon, Paris and Preston.</p>
<p><b>Idaho Power</b>  1221 W. Idaho St. Boise, ID 83702  800-488-6151, 208-388-2200  <a href="http://www.idahopower.com">www.idahopower.com</a></p> <p>Area Served: South-central, southwest, and selected areas of southeast Idaho. Towns serviced include: Payette, Caldwell, Nampa, Boise, Meridian, Mountain Home, Jerome, Twin Falls, Rupert, Burley, Pocatello, Chubbuck, and Blackfoot.</p>	

## Electric Co-ops, Mutual Municipalities

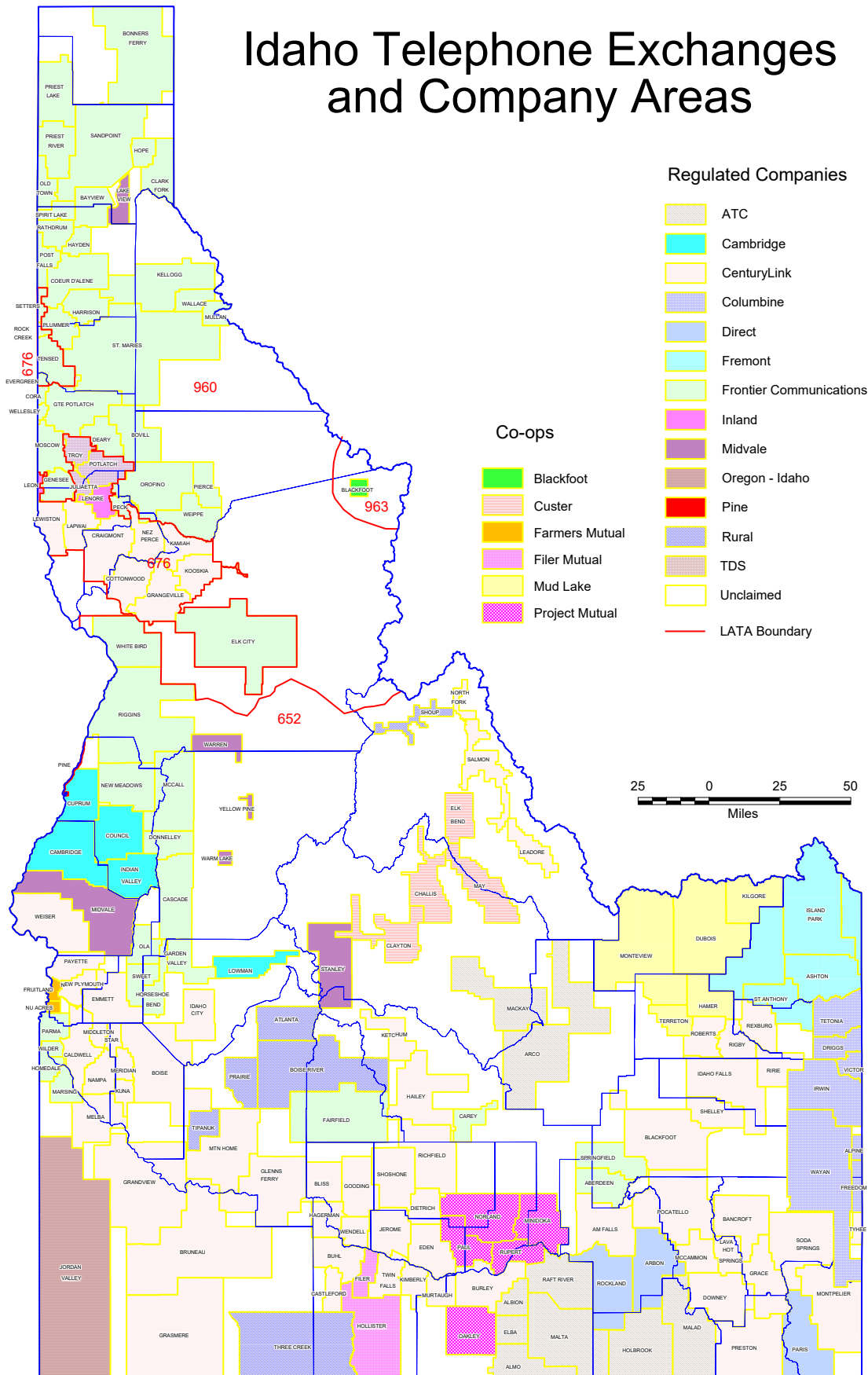
<p><b>Northern Lights, Inc.</b>  421 Chevy St.  Sagle, ID 83860  800-326-9594, 208-263-5141  <a href="http://www.nli.coop">www.nli.coop</a>  <a href="mailto:info@nli.coop">info@nli.coop</a></p> <p>Area Served: Northern Idaho including Bonners Ferry</p>	<p><b>Clearwater Power Company</b>  4230 Hatwai Road  Lewiston, ID 83501  888-743-1501, 208-743-1501  <a href="http://www.clearwaterpower.com">www.clearwaterpower.com</a>  <a href="mailto:cpc@clearwaterpower.com">cpc@clearwaterpower.com</a></p> <p>Area Served: Northwest Idaho including Moscow and Lewiston</p>
<p><b>Kootenai Electric Co-op, INC</b>  2451 W Dakota Ave. Hayden, ID 83835  800-240-0459, 208-765-1200  <a href="http://www.kec.com">www.kec.com</a>  <a href="mailto:kec@kec.com">kec@kec.com</a></p> <p>Area Served: Northwest Idaho including Plummer</p>	<p><b>Inland Power and Light</b>  10110 W. Hallet Road  Spokane, WA 99224  509-747-7151  <a href="http://www.inlandpower.com">www.inlandpower.com</a></p> <p>Area Served: Northwest Idaho</p>

# Idaho Power Directory

## Electric Co-ops, Mutual Municipalities

<p><b>Avista Utilities</b>  P.O. Box 3727  Spokane, WA 99220-0001  800-227-9187  <a href="http://www.myavista.com/">www.myavista.com/</a></p> <p>Area Served: Northern Idaho, including: Sandpoint, Post Falls, Coeur D'Alene, Moscow, Grangeville and Lewiston.</p>	<p><b>Rocky Mountain Power</b>  201 South Main St. Suite 2300  Salt Lake City, UT 84111  888-221-7070  <a href="http://www.rockymountainpower.net">www.rockymountainpower.net</a> (Spanish available)</p> <p>Area Served: Eastern Idaho including: Rexburg, Idaho Falls, Ammon, Paris and Preston.</p>
<p><b>Salmon River Electric Co-op</b>  1140 Main Street  Challis, ID 83226  208-879-2283  <a href="http://www.srec.org">www.srec.org</a>  <a href="mailto:energy@srec.org">energy@srec.org</a>  Area Served: Central Idaho including Challis.</p>	<p><b>Lost River Electric Co-op, Inc.</b>  305 Pine St.  MacKay, ID 83251  208-588-3311  <a href="http://www.lostriverelectriccoopinc.com">www.lostriverelectriccoopinc.com</a>  <a href="mailto:office@lrecoop.com">office@lrecoop.com</a></p> <p>Area Served: Central Idaho including Arco</p>
<p><b>Fall River Rural Electric Co-op</b>  1150 N 3400 E  Ashton, ID 83422  800-632-5726, 208-354-2377  <a href="http://www.fallriverelectric.com">www.fallriverelectric.com</a></p> <p>Area Served: Southeast Idaho including Driggs and Saint Anthony</p>	<p><b>Lower Valley Energy</b>  236 Washington St.  Afton, WY 83110  307-885-3175  <a href="http://www.lvenergy.com">www.lvenergy.com</a>  <a href="mailto:lvenergy@lvenergy.com">lvenergy@lvenergy.com</a></p> <p>Area Served: Southeast Idaho including Bonneville</p>
<p><b>Mini-Cassia Mutuals &amp; Co-ops</b>  East End  208-436-9357  528 E St., Rupert, ID 83350</p> <p>Farmers Electric  208-436-6384  285 W 290 Hwy 24 S, Rupert, ID 83350</p> <p>Riverside Electric  208-436-3855  125 E 300 S, Rupert, ID 83350</p> <p>South Side Electric  208-654-2313  74 N Clark St., Declo, ID 83323</p>	<p><b>Mini-Cassia Municipalities</b>  Albion - 208-673-5351  Burley - 208-678-2538  Declo - 208-654-2124  Heyburn - 208-678-8158  Rupert - 208-436-9608</p> <p><b>Other Municipalities</b>  Bonners Ferry - 208-267-3105  Idaho Falls - 208-529-1435  Plummer - 208-686-1386  Soda Springs - 208-547-2600  Weiser - 208-549-1965</p>

# Idaho Telephone Exchanges and Company Areas



# Idaho Telephone Exchange

## Co-op Companies

<p><b>Blackfoot Telecommunications Group</b>  <a href="http://www.blackfoot.com">www.blackfoot.com</a>            1221 North Russell St., Missoula, MT, 59808            New Business Customers Call:            406-541-5000            For Service on Existing Line Call: 800- 541-5000            Internet: Broadband service available up to 15Mbps downstream/1Mbps upstream</p>	<p><b>Farmers Mutual Telephone Company</b>  <a href="http://www.online.fmtc.com">www.online.fmtc.com</a>            319 SW 3rd Street, Fruitland, ID 83619 New Business Customers Call: 208-452-2000            For Service on Existing Line Call: 208-452-2000            Internet: DSL available up to 3 Mbps</p>
<p><b>Custer Telephone Cooperative, Inc.</b>  <a href="http://www.custertel.net">www.custertel.net</a>            1101 E Main Ave, Challis, ID 83226            New Business Customers Call: 208-879-2281            Internet: DSL available up to 512 kbps upstream/1.5 Mbps downstream.            Broadband available up to 5000 kbps downstream/1000 kbps upstream</p>	<p><b>Mud Lake Telephone</b>  <a href="http://www.mudlake.net">www.mudlake.net</a>            59 W. Main, Dubois, Idaho 83423            New Business Customers Call: 208-374-5401 For Service on Existing Line Call: 208-374-5401            Internet: DSL available up to 4 Mbps</p>
<p><b>TruLeap Technologies</b>  <a href="http://www.truleap.net">www.truleap.net</a>            400 Main Street, Filer, ID 83328            New Business Customers Call: 208-370-5595            For Service on Existing Line Call: 208-370-5595 Internet: DSL available up to 12 Mbp s downstream/ 1 Mbps upstream</p>	<p><b>Lower Valley Energy</b>  <a href="http://www.lvenergy.com">www.lvenergy.com</a>            236 N Washington St., Afton, WY 83110            New Business Customers Call: 307-885-3175            Internet: DSL available up to 20Mbps</p>

## Local Telecommunications Companies

<p><b>Direct Communications</b>  <a href="http://www.directcom.com">www.directcom.com</a>            150 S. Main Street, Rockland, ID 83271            New Business Customers Call: 208-548-2345 For Service on Existing Line Call: 800-245-4329            Internet: 10 Mbps/1 Mbps</p>	<p><b>Frontier Communications</b>  <a href="http://www.frontier.com">www.frontier.com</a>            830 Railroad Rd, Orofino, ID 83544            For Service on Existing Line Call: 208-883-8881            Internet: Broadband internet service available up to 12 Mbps upstream/ 512 kbps downstream</p>
--	--

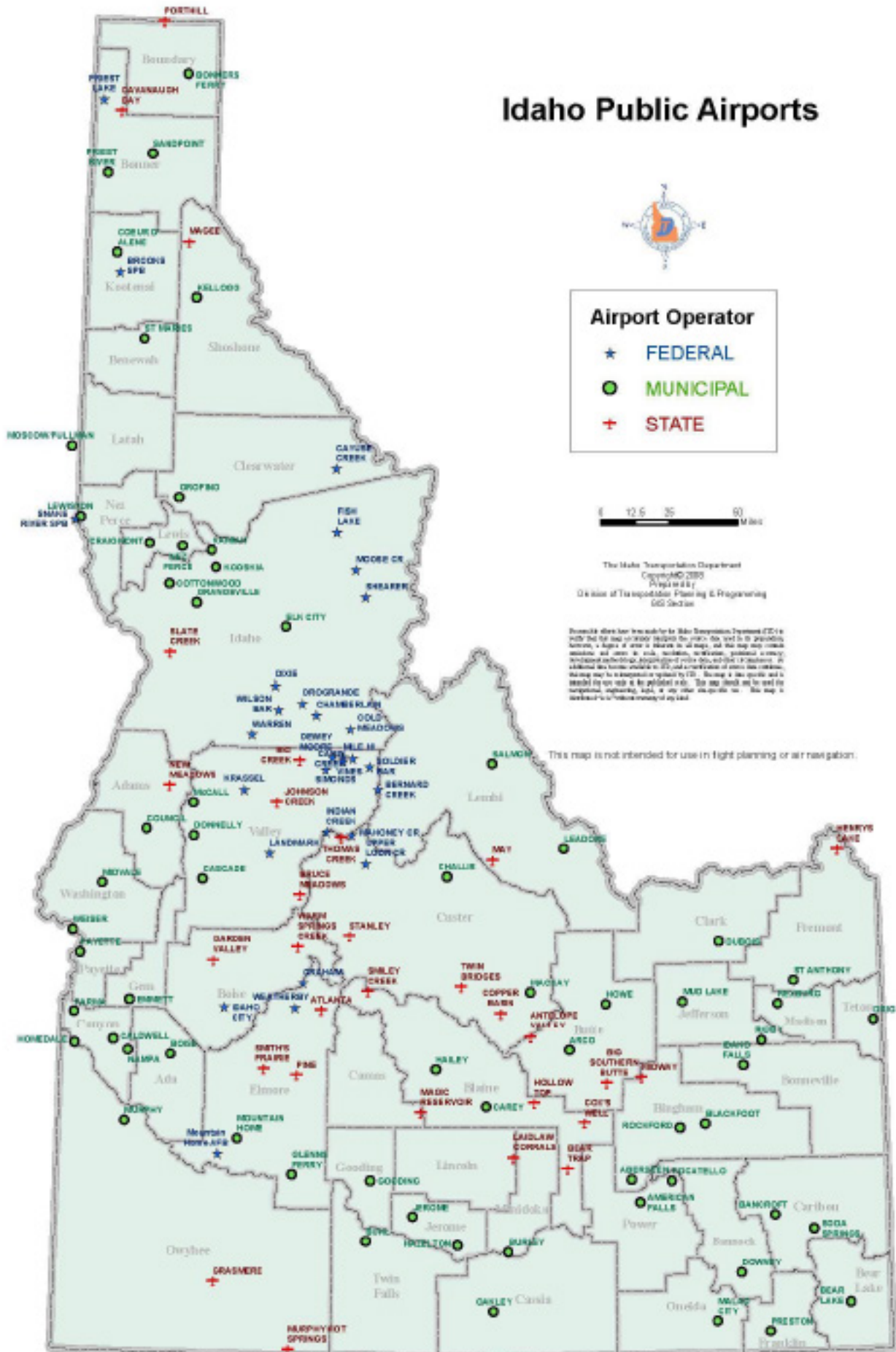


# Idaho Telephone Exchange

## Local Telecommunications Companies

<p><b>ATC Communications</b>  <a href="http://www.Atcnet.net">www.Atcnet.net</a>                  225 West North St., Albion, ID 83311                  New Business Customers Call: 208-673-5335</p> <p>Internet: DSL available up to 20 Mbps</p>	<p><b>Inland Networks</b>  <a href="http://www.inlandnetworks.com">www.inlandnetworks.com</a>                  103 South 2nd Street, Roslyn, WA 98941                  New Business Customers Call: 509-649-2211</p> <p>Broadband: 7 Mbps</p>
<p><b>Cambridge Telephone Company (CTC Telecom)</b>  <a href="http://www.ctcweb.net">www.ctcweb.net</a>                  130 Superior St., Cambridge, ID 83610                  New Business Customers Call: 208-257-3314</p> <p>Internet: DSL available up to 20 Mbps/2Mbps</p>	<p><b>Rural Telephone Company</b>  <a href="http://www.rtc.net">www.rtc.net</a>                  892 W. Madison Ave., Glens Ferry, ID 83623                  New Business Customers Call: 208-366-2614</p> <p>Internet: 15 Mbps up / 2 Mbps downstream</p>
<p><b>Blackfoot Communications</b>  <a href="http://www.blackfoot.com">www.blackfoot.com</a>                  110 E. Main St., St. Anthony, ID 83445                  New Customers Call: 208-624-7300</p> <p>Internet: Broadband service available up to 15 Mbps</p>	<p><b>Silver Star Communications (Columbine)</b>  <a href="http://www.silverstar.com">www.silverstar.com</a>                  570 S. Washington St. Afton, WY 83110                  New Business Customers Call: 877-883-2411</p> <p>Internet: 5 Mbps up / 10 Mbps downstream</p>
<p><b>MTE Communications</b>  <a href="http://www.mtecom.net">www.mtecom.net</a>                  Address: 2205 Keithley Cr. Road, Midvale, ID 83645                  New Business Customers Call: 880-462-4523</p> <p>Broadband: 10 Mbps</p>	<p><b>TDS Telecom</b>  <a href="http://www.tdstelecom.com">www.tdstelecom.com</a>                  New Business Customers Call: 855-220-2592</p> <p>Internet: 25 Mbps up / 5 Mbps downstream</p>
<p><b>Oregon-Idaho Utilities, Inc.</b>  <a href="http://www.oiutelcom.net">www.oiutelcom.net</a>                  1023 N Horton St., Nampa, ID 83651</p> <p>Business Customers Call: 800-847-5302</p> <p>Internet: DSL available up to 512 kbps upstream/ 6Mbps downstream</p>	<p><b>CenturyLink</b>  <a href="http://www.centurylink.com">www.centurylink.com</a>                  999 Main St., 11th Floor, Boise, Idaho 83702                  New Business Customers Call: 877-837-5788</p> <p>Internet: IGB/5Mbps, DSL and Broadband</p>
<p><b>Verizon</b>  <a href="http://www.verizonwireless.com">www.verizonwireless.com</a>                  New Business Customers Call: 800-225-5499</p> <p>Internet: DSL available</p>	

# Idaho Public Airports



# Idaho Airport Directory

## Primary Service

Commercial Service Airports that have more than 10,000 passengers a year.

<b>Airport</b>	<b>Location</b>	<b>Code</b>	<b>Charter Service</b>	<b>Runway Length</b>	<b>Paved</b>	<b>Passenger Airlines Served</b>	<b>Cargo</b>
<b>Boise Airport Terminal</b>	Boise	BOI	Yes	10,000 ft	Yes	Aha! Alaska Airlines Allegiant American Airlines Avelo Airlines Delta/Sky West Southwest Spirit United Airlines	Fed Ex UPS Western Air Express
<b>Idaho Falls</b>	Idaho Falls	IDA	Yes	9,000ft	Yes	Allegiant Delta/Sky West United Airlines Alaska Airlines American Airlines	
<b>Friedman Memorial</b>	Hailey	SUN	Yes	6,600ft	Yes	Alaska Airlines Delta United Airlines	
<b>Lewiston-Nez Perce County</b>	Lewiston	LWS	Yes	6,500ft	Yes	Delta Airlines United Airlines	
<b>Pocatello Regional</b>	Pocatello	PIH	Yes	9,000ft	Yes	Delta Airlines	
<b>Pullman-Moscow</b>	Moscow	VOR	Yes	7,101 ft	Yes	Alaska Airlines	
<b>Magic Valley Regional</b>	Twin Falls	TWF	Yes	8,700ft	Yes	Delta Airlines	UPS Fedex

# Idaho Airport Directory

## General Aviation

Privately owned, public use airports that have 2,500 or more passengers annually and receive scheduled airline service.

<b>Airport</b>	<b>Location</b>	<b>Code</b>	<b>Runway Length</b>	<b>Paved?</b>
Aberdeen Municipal	Aberdeen	U36	3,600ft	Yes
Arco-Butte Co.	Arco	KAOC	6,600ft	Yes
Bear Lake	Paris	1U7	5,700ft	Yes
Blackfoot	Blackfoot	U02	4,300ft	Yes
Bonnars Ferry	Bonnars Ferry	65S	4,000ft	Yes
Buhl	Buhl	U03	3,900ft	Yes
Burley	Burley	BYI	4,000ft	Yes
Cascade	Cascade	U70	4,300ft	Yes
Challis	Challis	CHL	4,600ft	Yes
Coeur d' Alene	Coeur d' Alene	COE	7,400ft	Yes
Council	Council	U82	3,600ft	Yes
Craigmount	Craigmount	S89	2,800ft	Yes
Driggs	Driggs	DIJ	7,300ft	Yes
Gooding	Gooding	GNG	4,700ft	Yes
Grangeville	Grangeville	GIC	5,100ft	Yes
Homedale	Homedale	S66	2,900ft	Yes
Jerome	Jerome	KJER	5,000ft	Yes
Kamiah	Kamiah	S73	3,000ft	No
Kellogg	Kellogg	S83	5,500ft	Yes
McCall	McCall	MYL	6,100ft	Yes
Mountain Home AFB	Mountain Home	MUO	13,500ft	Yes
Nampa	Nampa	S67	5,000ft	Yes
Orofino	Orofino	S68	2,500ft	Yes
Picabo	Picabo		3,000ft	Yes
Preston	Preston	U10	3,400ft	Yes
Priest River	Riest River		2,900ft	Yes
Rexburg	Rexburg	KRXE	4,200ft	Yes
Sandpoint	Sandpoint	KSZT	5,500ft	Yes
Salmon	Salmon	SMN	5,100ft	Yes
St. Maries	St. Maries	S72	4,200ft	Yes
Weiser	Weiser	S87	4,000ft	Yes



# Idaho Airport Directory

## Reliever

Airports designed to relieve congestion at commercial service airports and provide improved aviation access to the community .

<b>Airport</b>	<b>Location</b>	<b>Code</b>	<b>Runway Length</b>	<b>Paved?</b>
Treasure Valley Executive Airport	Caldwell	KEUL	5,500ft	Yes

## Backcountry

Airports that poses higher than normal danger due to its runway surface, length, location and/or high altitude

<b>Airport</b>	<b>Location</b>	<b>Code</b>	<b>Runway Length</b>	<b>Paved?</b>
Cabin Creek	Big Creek Station	108	1,700ft	No
Chamberlain	Chamberlain	U79	4,100ft	No
Cold Meadows	Cold Meadows	U81	4,500ft	No
Dixie	Dixie		4,500ft	No
Fish Lake	Fish Lake	S92	2,600ft	No
Graham	Altanta	U45	2,900ft	No
Idaho City	Idaho City	U98	3,400ft	No
Indian Creek	Indian Creek	S81	4,600ft	No
Krassel	McCall		1,500ft	No
Mahoney Creek	Mahoney Creek		2,100ft	No
Priest River	Priest River		2,900ft	Yes
Shearer	Shearer		2,000ft	No
Soldier Bar	Solider bar		1,600ft	No
Upper Loon Creek	Challis	Y72	2,500ft	No
Warren	Warren		2,700ft	No
Weatherby	Atlanta		2,200ft	No

# Idaho Airport Directory

## Community

Airports Owned by a local entity such as a city or municipality

<b>Airport</b>	<b>Location</b>	<b>Code</b>	<b>Runway Length</b>	<b>Paved?</b>
American Falls	American Falls	U01	4,900ft	Yes
Bancroft	Bancroft	U51	3,200ft	No
Brooks SPB	Coeur d'Alene	S76	15,000ft	No
Carey	Carey	U65	2,600ft	No
Cottonwood	Cottonwood	S84	3,100ft	Yes
Downey	Downey	U58	3,500ft	Yes
Dubois	Dubois	U41	4,600ft	No
Elk City	Elk City	S90	2,600ft	No
Emmett	Emmett	S78	3,300ft	Yes
Fairfield	Fairfield	U86	2,900ft	No
Glenns Ferry	Glenns Ferry	U89	3,000ft	Yes
Hazelton	Hazelton	U94	2,800ft	Yes
Howe	Howe	U97	3,800ft	No
Kooskia	Kooskia	S82	1,900ft	No
Leadore	Leadore	U00	3,500ft	Yes
Mackay	Mackay	U62	4,400ft	Yes
Malad City	Malad City	MLD	4,900ft	Yes
Midvale	Midvale		3,200ft	No
Mud Lake	Mud Lake		3,300ft	Yes
Murphy	Murphy		2,500ft	Yes
Nez Perce	Nez Perce		2,400ft	Yes
Oakley	Oakley		3,800ft	
Parma	Parma		2,700ft	Yes
Rigby	Rigby	U56	3,500ft	Yes
Rockford	Rockford		2,800ft	Yes
Snake River SPB	SW of Lewiston	78U	3,000ft	Yes
St. Anthony	St. Anthony	U12	4,500ft	Yes

# Idaho Airport Directory

## State Owned

Airports owned by the state and maintained by the division of aeronautics.

<b>Airport</b>	<b>Location</b>	<b>Code</b>	<b>Runway Length</b>	<b>Paved?</b>
Antelope Valley	Grouse	U92	3,400ft	No
Atlanta	Atlanta		2,500ft	No
Bear Trap	Minidoka		2,200ft	No
Big Creek	Big Creek	U60	3,500ft	No
Big Southern Butte	Atomic City	U46	2,600ft	No
Bruce Meadows	Stanley	U68	5,000ft	No
Cavanaugh Bay	Coolin		3,100ft	No
Copper Basin	Mackay		4,700ft	Yes
Cox's Well	Atomic City	U48	2,700ft	No
Garden Valley	Garden Valley	U88	3,800ft	No
Grasmere	Grasmere	U91	2,700ft	No
Henry's Lake	N of Island Park	U53	4,600ft	No
Hollow Top	S of Martin	OU7	2,500ft	No
Johnson Creek	Yellow Pine		3,400ft	No
Laidlaw Corrals	Kimama	U99	2,200ft	No
McGee	Coeur d'Alene	S77	2,400ft	No
Magic Reservoir	Hailey	U93	4,000ft	No
May	May		4,900ft	No
Midway	Atomic City	U37	3,800ft	No
Murphy Hot Springs	Three Creek		5,200ft	No
New Meadows	New Meadows		2,400ft	No
Pine	Pine		2,300ft	No
Porthill	Porthill		3,600ft	No
Slate Creek	Slate Creek		2,600ft	No
Smiley Creek	NW of Galena	U87	4,900ft	No
Smith Prairie	Pairie		5,400ft	No
Stanley	Stanley		4,300ft	No
Thomas Creek	Stanley		2,100ft	No
Twin Bridges	Ketchum	U61	4,400ft	No
Warm Springs Creek	E of Lowman	U01	2,850ft	No

# Idaho Airport Directory

## Wilderness

Airports owned by US Forest Service physically located within the boundaries of designated wilderness areas.

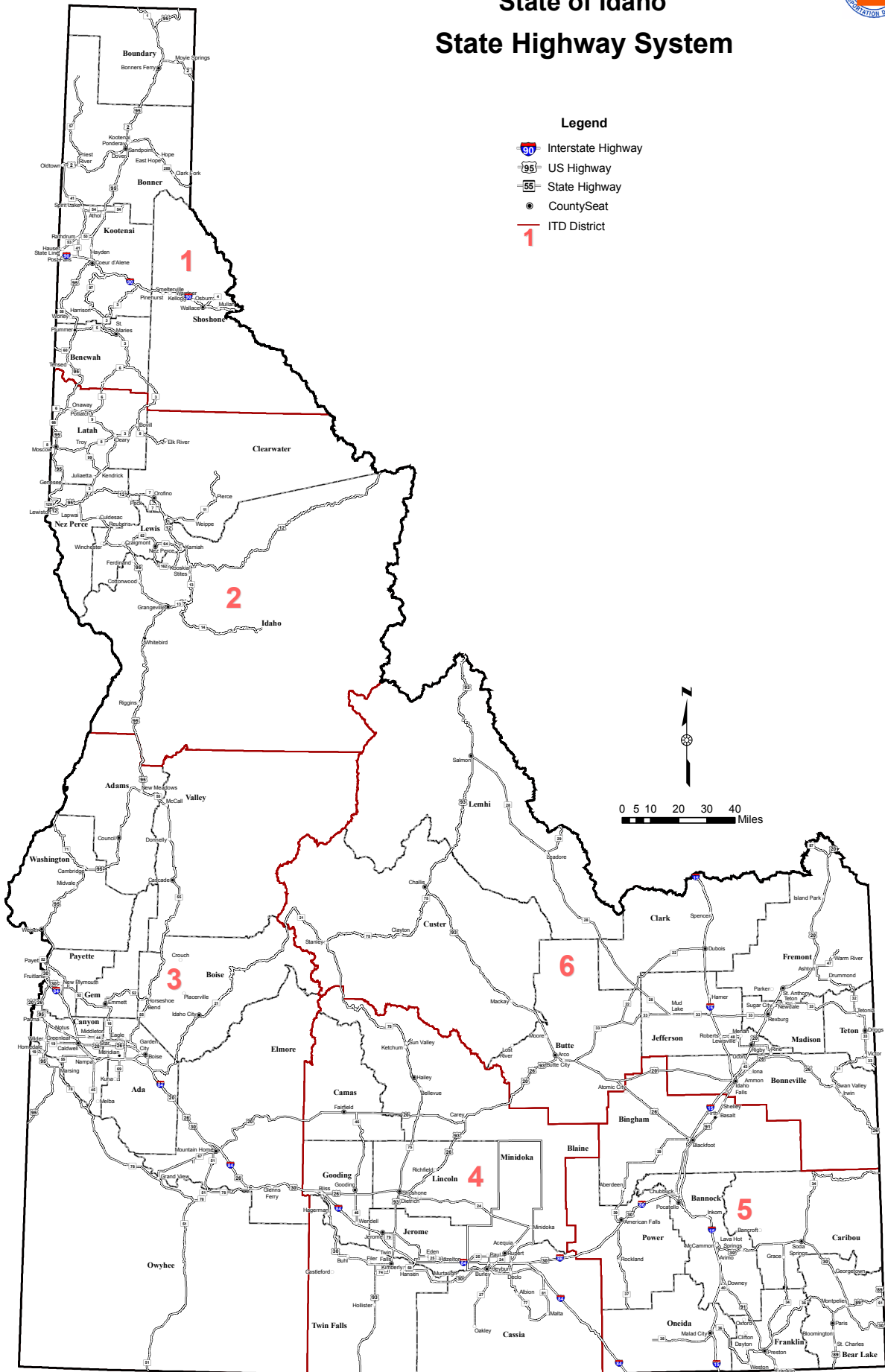
<b>Airport</b>	<b>Location</b>	<b>Code</b>	<b>Runway Length</b>	<b>Paved?</b>
Cayuse Creek	NE of Pierce		1,800ft	No
Dewey Moore	NE of McCall		700ft	No
Mile Hi	NE of Yellow Pine		560ft	No
Simonds	NE of Yellow Pine		900ft	No
Vines	SE of Warren		1,100ft	No





# State of Idaho

## State Highway System



# Idaho Highway Directory

## Interstate

Interstate 15	200 Miles in Length; Traverses through Pocatello, Blackfoot, and Idaho Falls.
Interstate 84	Crosses through the southern portion of the state, through Boise and Twin Falls.
Interstate 86	Stretches from I-84 in Heyburn to I-15 in Pocatello.
Interstate 90	73 miles in length; Passes through the Idaho panhandle.
Interstate 184	Connects I-84 travelers to downtown Boise.

## US Highways

US Highway 2	Intersects Idaho Route 57 in the town of Priest River, then intersects U.S. 95 in the town of Sandpoint.
US Highway 12	Follows the Clearwater River from Lewiston to Orofino, continuing up the middle fork of the river to Lowell.
US Highway 20	Crosses into Idaho from Oregon Northwest of Parma. Joins Route 95 to Caldwell.
US Highway 26	From Wyoming proceeds to Idaho Falls and joins Interstate 15. Travels through Blackfoot, Bliss, and Mountain Home.
US Highway 30	Enters Idaho from Oregon, travels through Fruitland, New Plymouth, Bliss, Twin Falls, Burley, Pocatello, and McCammon
US Highway 89	Partially circumnavigates Bear Lake.
US Highway 91	Passes through Cache Valley, Pocatello, then follows the original route of the Yellowstone Park Highway until it reaches Idaho Falls.
US Highway 93	Enters Idaho from Nevada north of Jackpot. Travels through Twin Falls, Shoshone, Arco, Challis, and Salmon.
US Highway 95	Enters Idaho from Oregon through Weiser, proceeds north through Homedale to Coeur D'Alene.
US Highway 195	US 195 runs 94.02 miles in Idaho and Washington, north of Lewiston.

# Idaho Highway Directory

## State Highways

State Highway 1	Connects US-95 to the Canadian Border at Porthill.	State Highway 29	From Leadore to the Montana border
State Highway 3	Runs from Nez Perce County to I-90 in Kootenai County.	State Highway 31	Goes from Swan Valley to Victor, in eastern Idaho
State Highway 5	From Plummer to St. Maries.	State Highway 32	In eastern Idaho, from Ashton to Tetonia
State Highway 6	Connects State Highway 3 to the Washington border near Potlatch.	State Highway 33	Runs from Butte County to the Wyoming border
State Highway 7	Serves the communities of Orofino and Ahsahka.	State Highway 34	Goes from Preston to the Wyoming border
State Highway 8	Runs from the Washington border at Moscow to Elk River.	State Highway 36	Travels from Ovid through Preston to I-15
State Highway 9	Connects State Highway 6 at Princeton to State Highway 8 at Deary.	State Highway 37	Connects Holbrook to I-86 at American Falls
State Highway 11	Through Weippe and Pierce in Clear-water County.	State Highway 38	Runs from Holbrook to Malad City and I-15
State Highway 13	Runs from Kooskia to downtown Grangeville.	State Highway 39	From Blackfoot to American Falls
State Highway 14	In Idaho County, connecting Grangeville to Elk City.	State Highway 41	Runs from Post Falls to the Washington border
State Highway 16	Route from US Highway 20/26 to Emmett.	State Highway 44	Cuts through the Treasure Valley from I-84 to Garden City
State Highway 19	Connects Caldwell to the Oregon border near Homedale.	State Highway 45	Connects State Highway 78 to downtown Nampa
State Highway 21	Travels from the east end of Boise to Stanley.	State Highway 46	Runs from Camas County to Wendell
State Highway 22	Goes through Dubois to Butte County, where it joins State Highway 33.	State Highway 47	Travels from Fremont County to Ashton
State Highway 24	In south-central Idaho, from Burley to Shoshone.	State Highway 48	A route from Roberts to Ririe
State Highway 25	Near I-84, from Jerome to the Declo area.	State Highway 51	From Mountain Home to the Nevada Border
State Highway 27	Connects Oakley to Burley and Paul.	State Highway 52	Runs from Horseshoe Bend to the Oregon border at Payette
State Highway 28	Runs from Salmon to I-15.	State Highway 53	Runs from Rathdrum to the Washington Border

# Idaho Highway Directory

## State Highways

State Highway 54	Between Spirit Lake and Bayview.	State Highway 71	Connects Cambridge to the Oregon border near Brownlee Dam.
State Highway 55	From Marsing, runs east to Meridian, turns to New Meadows	State Highway 75	From Shoshone through Sun Valley to Challis.
State Highway 57	From Priest River to Nordman.	State Highway 77	Connects US Highway 30 to Malta.
State Highway 58	Continuation of WA-278.	State Highway 78	From Marsing to Hammett.
State Highway 60	From US Highway 95 near Plummer to the Washington Border.	State Highway 81	From Malta to Burley.
State Highway 62	Runs from Craigmont to Nezperce.	State Highway 87	From US Highway 20 near Henrys Lake to the Montana border.
State Highway 64	runs from Nexperce to Kamiah and US Highway 12.	State Highway 97	From Harrison to I-90.
State Highway 66	From US-95 near viola to the washington border.	State Highway 99	From Troy to Kendrick.
State Highway 67	Between Grandview and Mountain Home.	State Highway 162	From Nezperce to Kamiah.
State Highway 69	From Kuna I-84 in Meridian.	State Highway 200	Pend Oreille Scenic Byway from Ponderay to the Montana border.



# Idaho Railroads

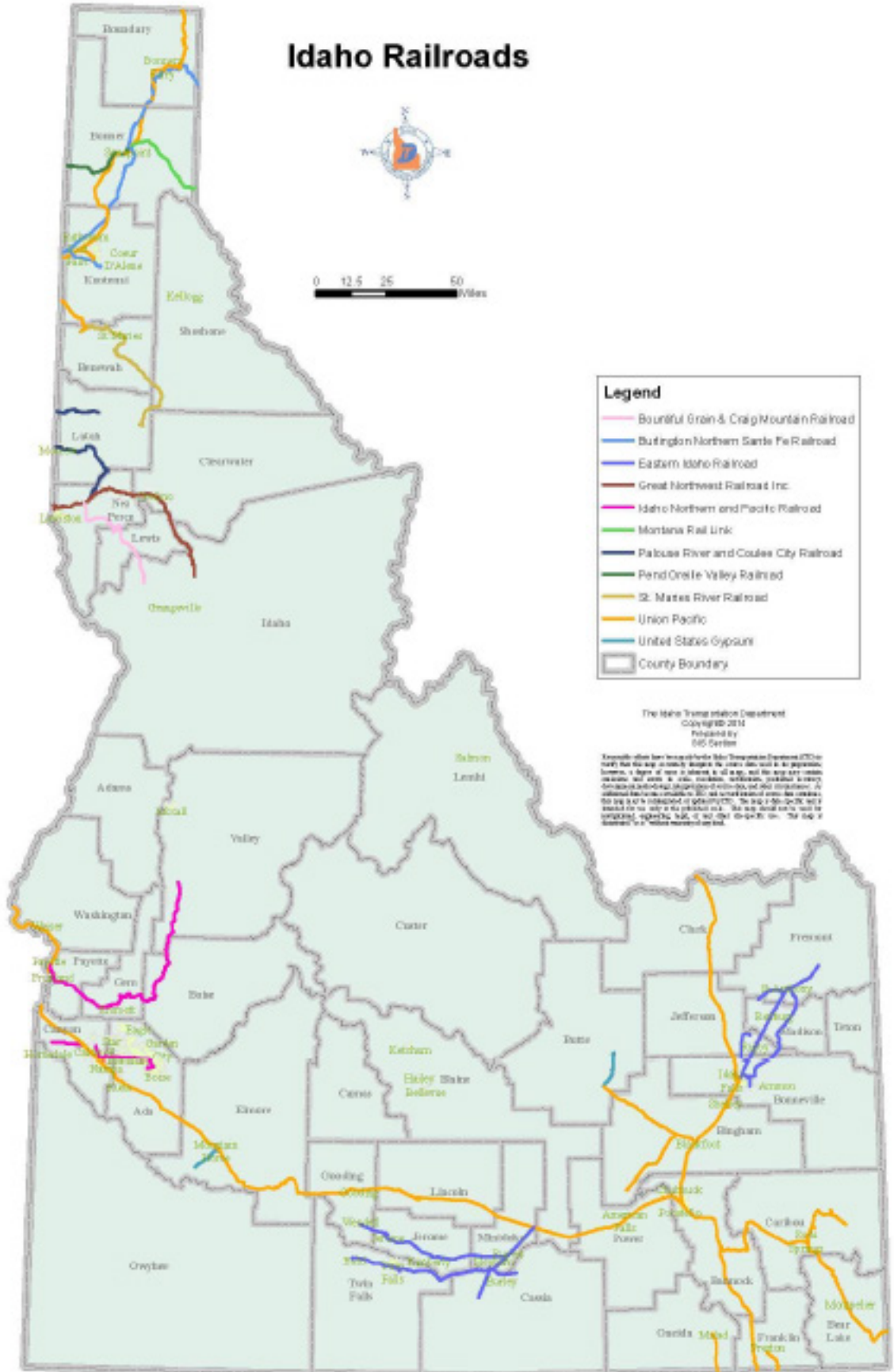


**Legend**

- Bountiful Grain & Craig Mountain Railroad
- Burlington Northern Santa Fe Railroad
- Eastern Idaho Railroad
- Great Northwest Railroad Inc.
- Idaho Northern and Pacific Railroad
- Montana Rail Link
- Palouse River and Coulee City Railroad
- Pend Oreille Valley Railroad
- St. James River Railroad
- Union Pacific
- United States Gypsum
- County Boundary

The Idaho Transportation Department  
 Copyright 2014  
 Prepared by  
 GIS Center

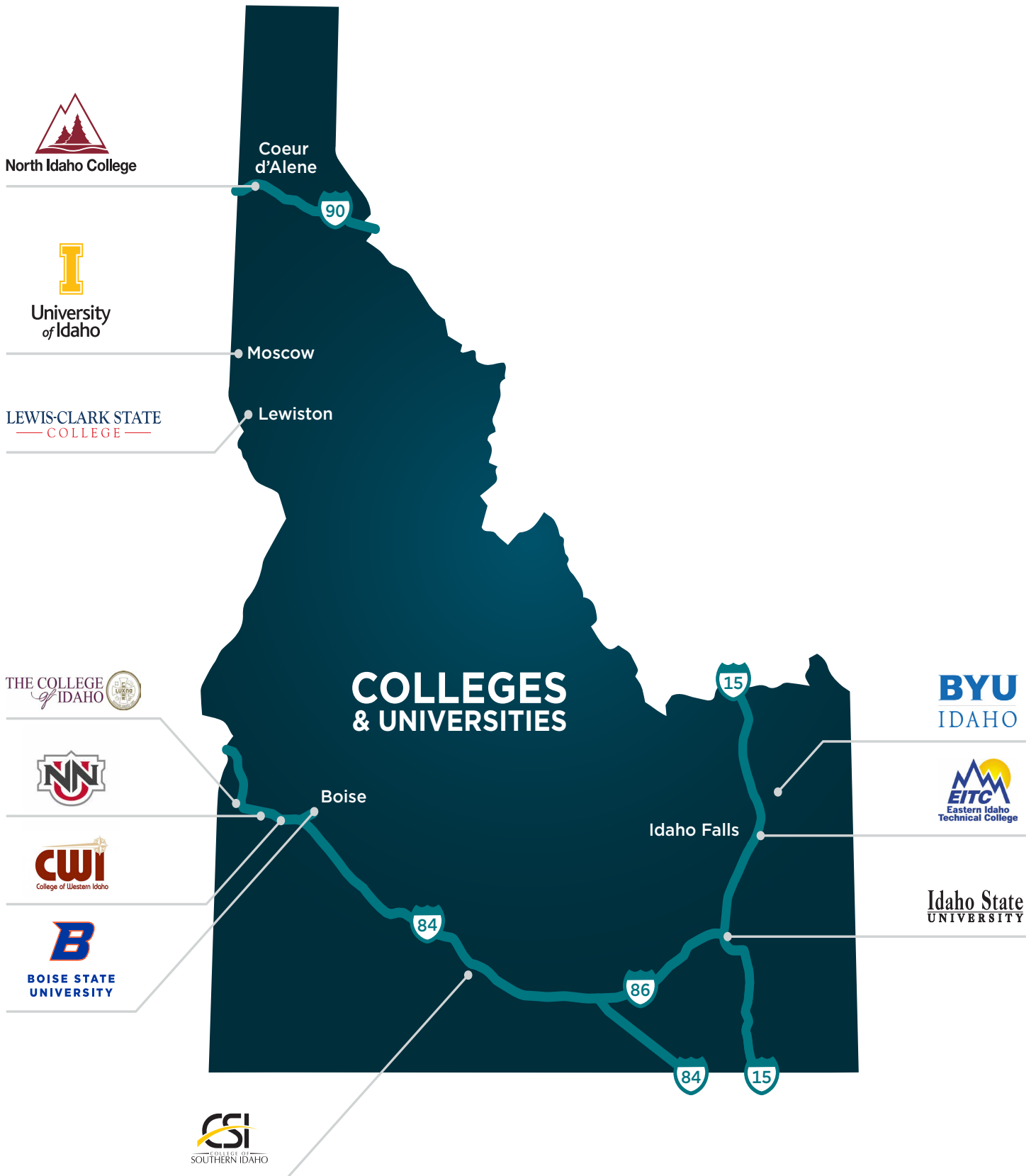
Esri and other names listed on this Idaho Transportation Department (ITD) map are the registered trademarks of their respective owners. All other names, including but not limited to, names of cities, towns, and counties, are the property of their respective owners. The map is not intended to be used for legal purposes. The map is not intended to be used for legal purposes. The map is not intended to be used for legal purposes.



# Idaho Rail Directory

<p><b>Bountiful Grain &amp; Craig Mountain (BG &amp; CM)</b>          Contact: 816-470-7069          Rail Mileage: 52 miles          Freight Service: yes          Passenger Service: no          Route: Through Lewiston to Spalding</p>	<p><b>Palouse River and Coulee City Railroad (PCC)</b>          Contact: 509-397-9014          Freight Service: yes          Passenger Service: no          Route: E/W, Through Princeton and Potlatch</p>
<p><b>BNSF Railway (BNSF)</b>          Contact: 800-832-5452          Rail Mileage: 194 miles          Freight Service: yes          Passenger Service: yes          Route: E/W N/S, Through Sandpoint, Bonners Ferry and Kootenai</p>	<p><b>Pend Oreille Valley Railroad (POVA)</b>          Contact: 509-445-1750          Rail Mileage: 26 miles          Freight Service: yes          Passenger Service: yes          Route: Old Town to Dover</p>
<p><b>Great Railroad (GNWR)</b>          Contact: 208-733-4686 ext.12          Rail Mileage: 77 miles          Freight Service: yes          Passenger Service: no          Route: E/W From Lewiston through Orofino, leads west to Riparia, Washington</p>	<p><b>St. Maries River Railroad (STMA)</b>          Contact: 208-245-4531          Rail Mileage: 71 miles          Freight Service: yes          Passenger Service: no          Route: Plummer to St. Maries to Bovill</p>
<p><b>Eastern Idaho Railroad (EIRR)</b>          Contact: 208-734-4644          Rail Mileage: 267 miles          Freight Service: yes          Passenger Service: no          Route: E/W, N/S through Newdale, Menan, St. Anthony, and Ashton. Separate line through Buhl, Burley, Rupert, and Wendell</p>	<p><b>Union Pacific Railroad (UP)</b>          Contact: 888-877-7267          Rail Mileage: 848 miles          Freight Service: yes          Passenger Service: yes          Route: E/W N/S, Through Boise, Shoshone, American Falls, Rigby. And N/S from Spokane to Eastport</p>
<p><b>Idaho Northern and Pacific Railroad (INPR)</b>          Contact: 208-365-6353          Rail Mileage: 102 miles          Freight Service: yes          Passenger Service: no          Route: Lines through Emmett, Horseshoe Bend, and Cascade</p>	<p><b>Montana Rail Link (MRL)</b>          Contact: 800-338-4750          Rail Mileage: 84 miles          Freight Service: yes          Passenger Service: no          Route: E/W, Sandpoint to Spokane</p>

# Idaho Higher Education



# Idaho Higher Education

## State Universities



Boise State University  
[www.boisestate.edu](http://www.boisestate.edu)



University of Idaho  
[www.uidaho.edu](http://www.uidaho.edu)



Idaho State University  
[www.isu.edu](http://www.isu.edu)

## State Colleges



College of Southern Idaho  
[www.csi.edu](http://www.csi.edu)



Lewis-Clark State College  
[www.lcsc.edu](http://www.lcsc.edu)



North Idaho College  
[www.nic.edu](http://www.nic.edu)



College of Eastern Idaho  
[www.cedi.edu](http://www.cedi.edu)



College of Western Idaho  
[www.cwi.edu](http://www.cwi.edu)



# Idaho Higher Education

## Private Universities



Brigham Young University  
[www.byui.edu](http://www.byui.edu)



University of Phoenix  
[www.phoenix.edu](http://www.phoenix.edu)



Northwest Nazarene University  
[www.nnu.edu](http://www.nnu.edu)

## Private Colleges



The College of Idaho  
[www.collegeofidaho.edu](http://www.collegeofidaho.edu)



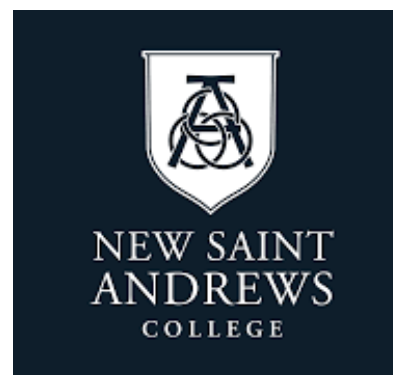
Boise Bible College  
[www.boisebible.edu](http://www.boisebible.edu)



Carrington College  
[www.carrington.edu](http://www.carrington.edu)



Steven Henager College  
[www.stevenhenager.edu](http://www.stevenhenager.edu)



New Saint Andrews College  
[www.nsa.edu](http://www.nsa.edu)

Total Population (2020):

1,839,106

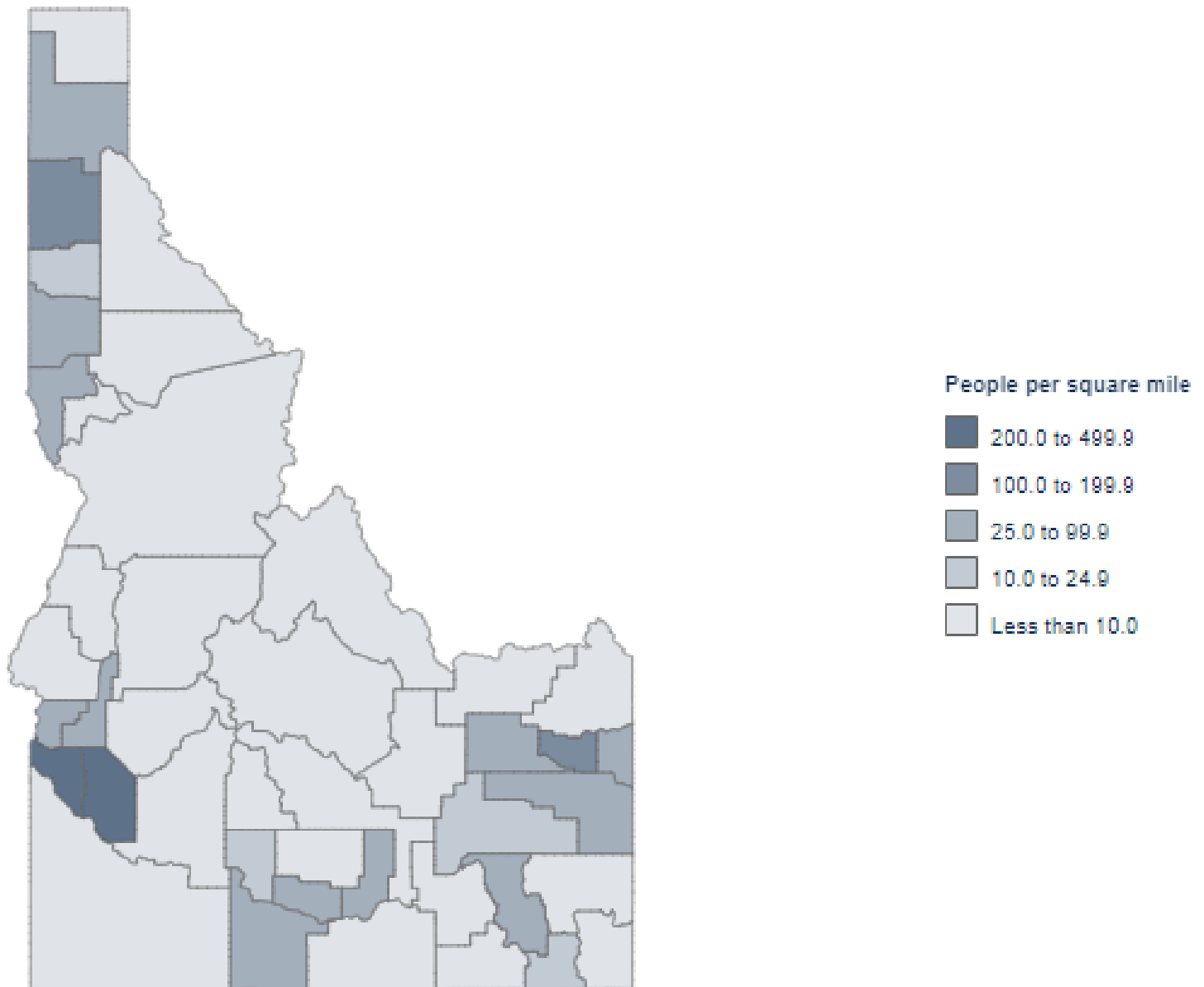
Numeric Change in Population (2010–2020):

271,524

Percent Change in Population (2010–2020):

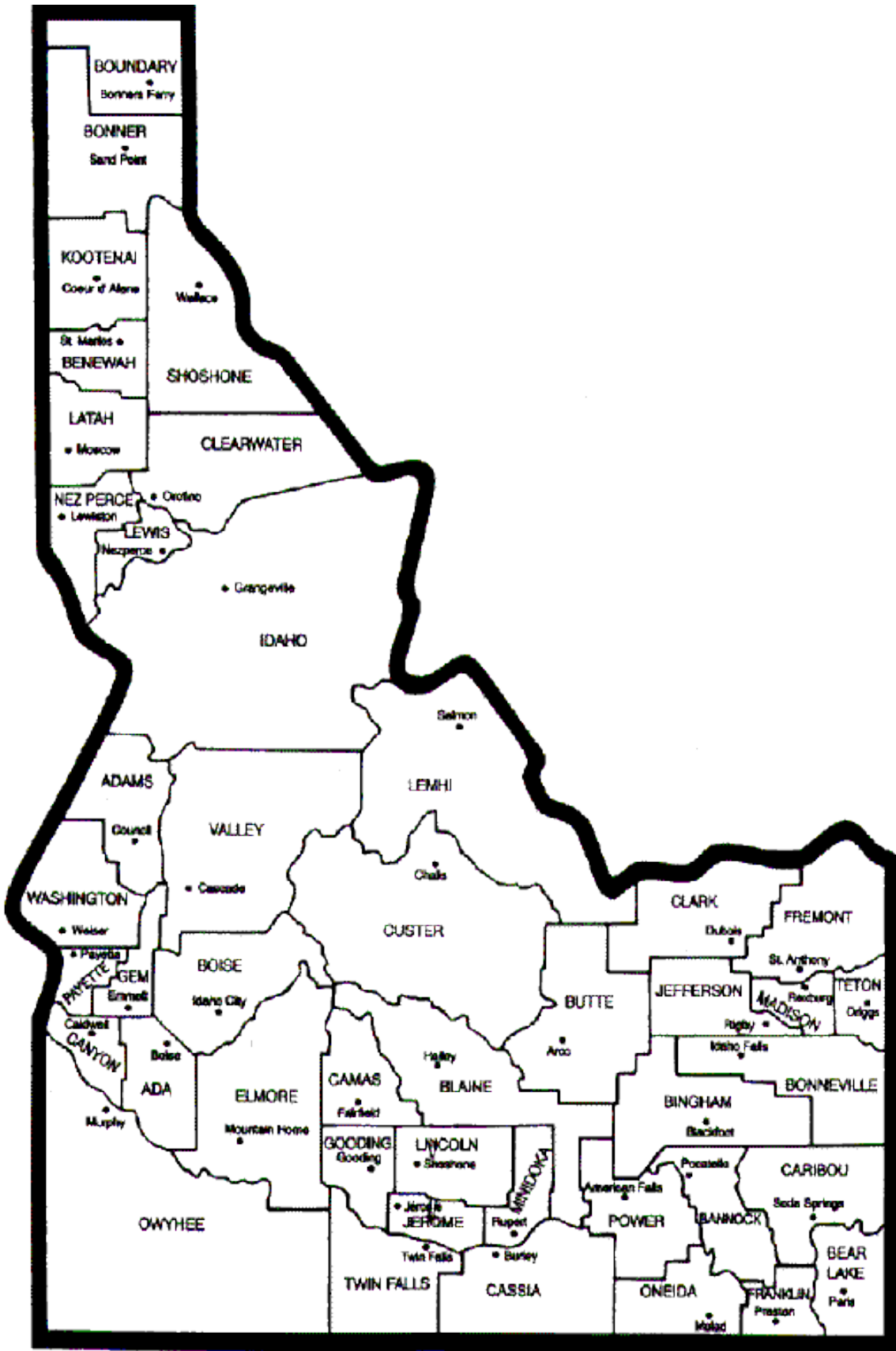
17.3%

## Population Density in Idaho Counties: 2020



[View more at census.gov](https://www.census.gov)

# Idaho County Map

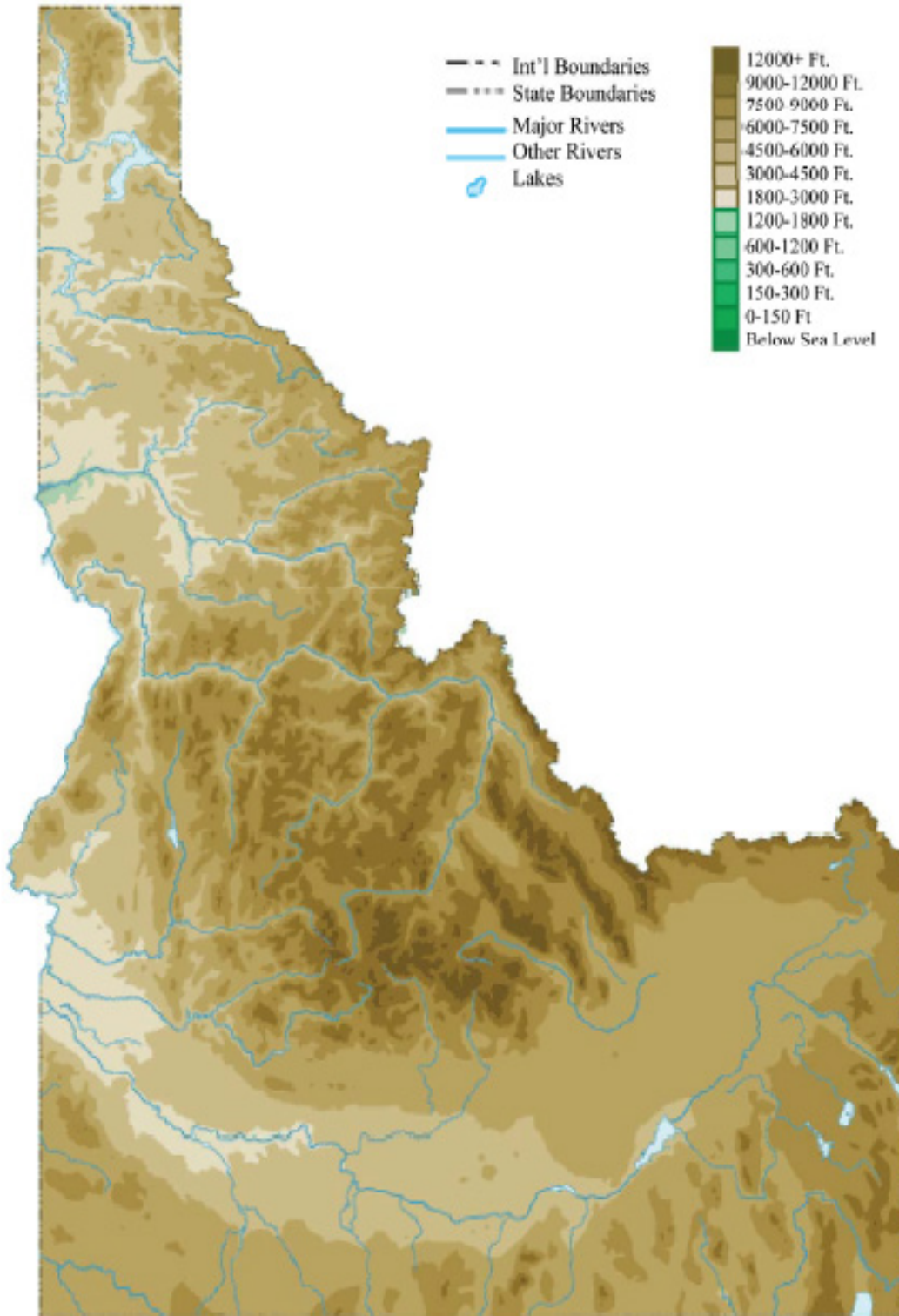




# Idaho Relief Map



# Idaho Topographical Map







[commerce.idaho.gov](http://commerce.idaho.gov)