

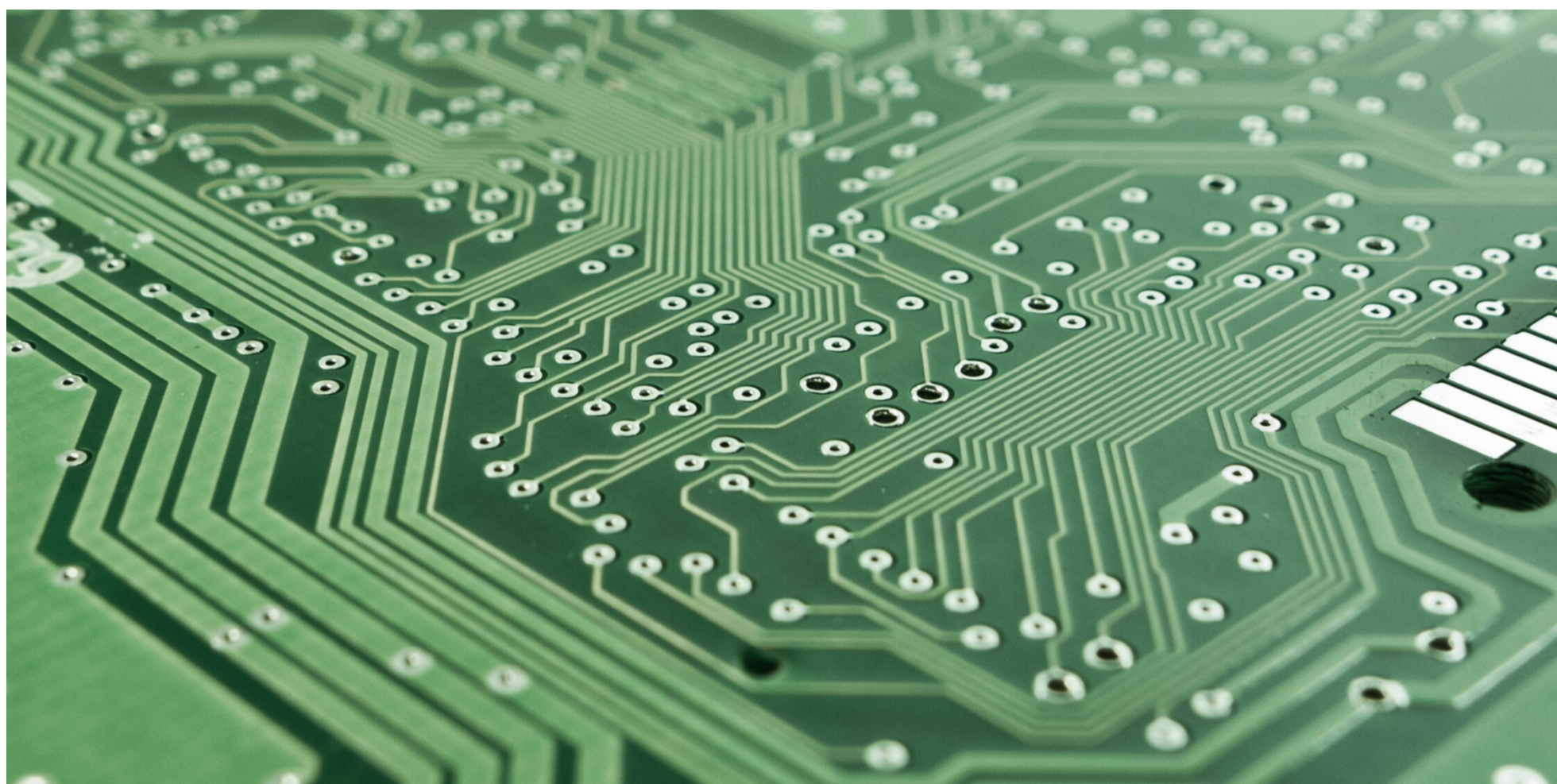
OVERVIEW

Idaho has a long history of innovation. From the first electronic television set to the invention of frozen French fries, Idaho's inventors have harnessed brilliant ideas to change the world.

Idaho is home to the only US-based memory chip maker, Micron Technology, and a myriad of other high-profile tech companies like Equifax, Cradlepoint and more.

Over 15,000 people work in Idaho's innovation industry and they're pushing technology boundaries, launching start-ups and fueling further growth and discovery.

Idaho is cementing a reputation as a "launchpad" for technology careers.



DID YOU KNOW?

Idaho's tech sector grew more than twice the rate of the U.S. national average between 2017 and 2018.

INDUSTRY LEADERS

Simplot (Boise) is most well-known for its role in food processing and farming but has developed into a major agriculture technology company. Simplot has become a leader in plant genomes and other agricultural technology advancements.

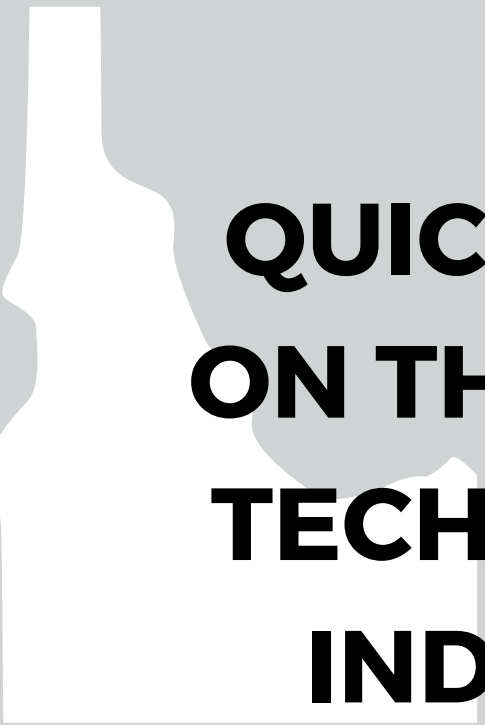
Cradlepoint (Boise) is the industry leader in cloud-delivered 4G LTE network solutions for businesses, service providers, and government organizations. The company has also been a leader in 5G advancements. It was recently acquired by Ericsson.

Kount (Boise) is the innovator of solutions for fraud and risk management, and ClickBank, the pay-per-sale marketing engine for 10,000 infopreneurs, and their 100,000 affiliates. It was recently acquired by Equifax.

Kochava (Sandpoint) is a mobile app attribution and analytics company that provides mobile advertisers with real-time visualization of campaign & user data.

ON Semiconductor (Pocatello) supplies high-performance, energy-efficient silicon solutions for green electronics.

T-Sheets (Eagle) is a cloud-based time tracking and scheduling solution for over 500,000 users in over 100 countries and was recently acquired by Intuit.



QUICK FACTS ON THE IDAHO TECHNOLOGY INDUSTRY

\$4.1B

Contributed to
Idaho's GDP

515

Establishments

15,511

Jobs

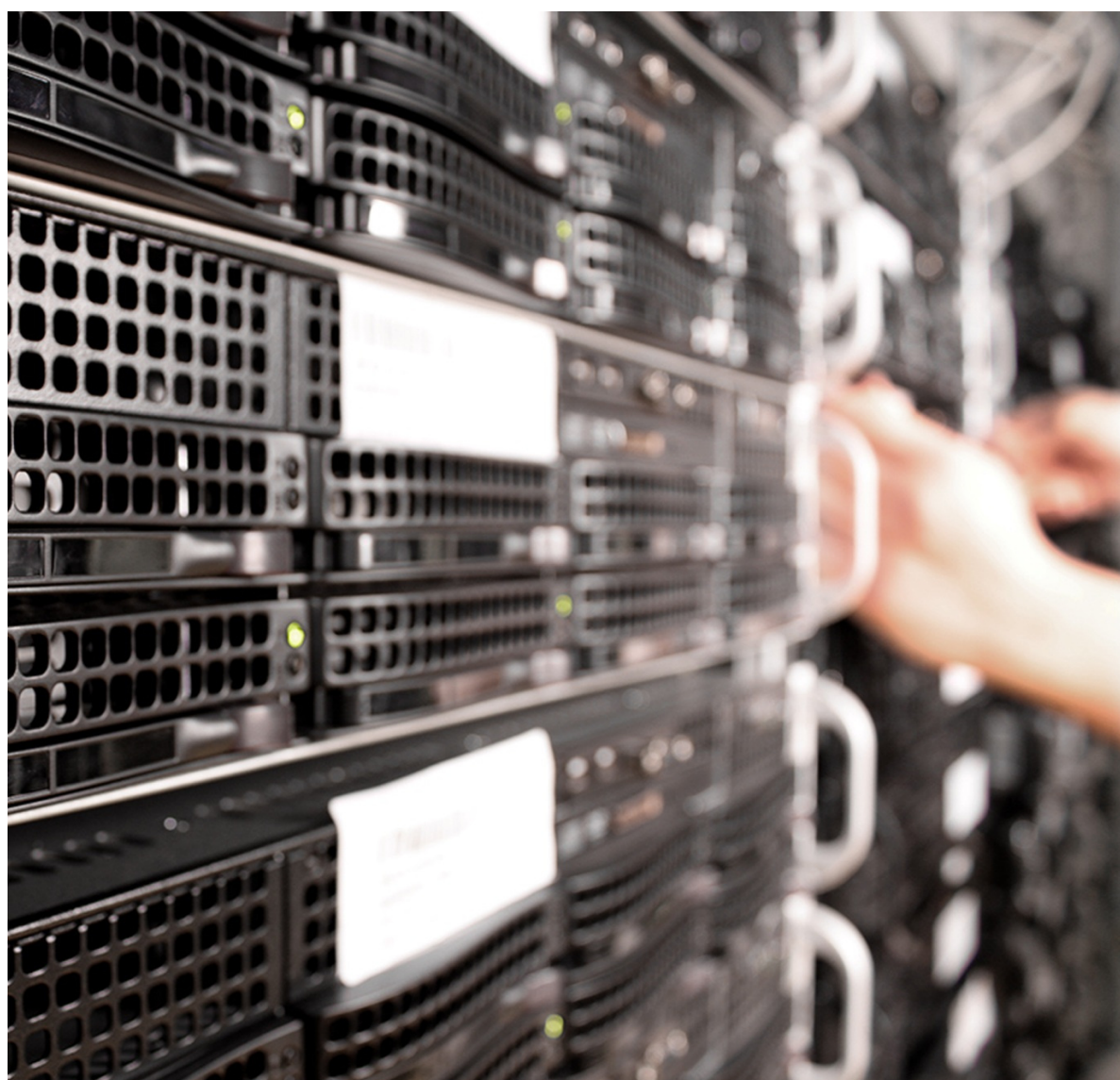
\$113,919

Average wage

2%

10-Year Projected
Growth

*All employment and wage numbers are from IDOL, and GDP data is from the Bureau of Economic Analysis.



CAPITAL AND DEAL-FLOW

2020

\$5.2B+ in total capital

151 total deals

\$1.5B+ in mergers
and acquisitions

2019

\$4.4B+ in total capital

154 total deals

INDUSTRY PARTNERS

Across Idaho are industry partners ready to assist you and provide helpful resources and insight. Top industry partners include:

Idaho Technology Council (Boise) brings together industry, education, research, investment and government throughout the state.

LINE Commission (Boise) makes recommendations to the state to support the mission of nuclear industries in Idaho.

Idaho Association of Commerce & Industry (Boise) provides leadership and education in development of public policies to improve economic growth and progress.

Trailhead (Boise) provides a co-working space and resources for entrepreneurs and start-ups



EDUCATIONAL PARTNERS

Idaho is home to some of the top research universities in the country, research universities ranked amongst some of the best in the nation. Educational partners in Idaho include:

University of Idaho (Moscow) is a land-grant research university offering over 300 degrees.

Boise State University (Boise) offers 200 areas of study and various degrees and opportunities in research.

Idaho State University (Pocatello) offers more than 250 programs and is a Carnegie-classified doctoral research institution

Idaho National Laboratory (Idaho Falls) is one of just 17 national laboratories and has been designated by the U.S. Department of Energy as the nation's lead nuclear research facility.

Center for Advanced Energy Studies (Idaho Falls) is a research and education consortium between Boise State University, Idaho State University, the University of Idaho and the Idaho National Laboratory.