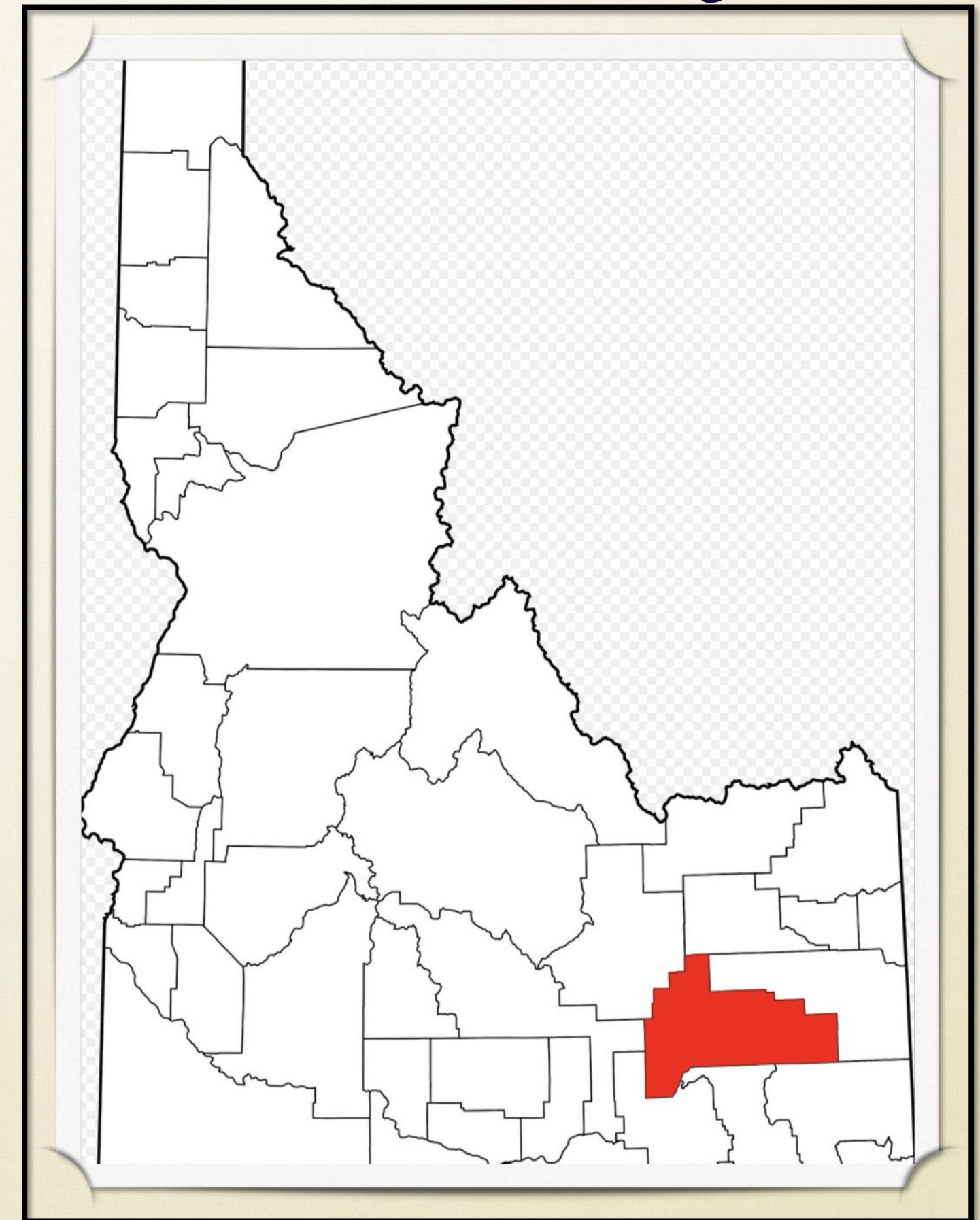
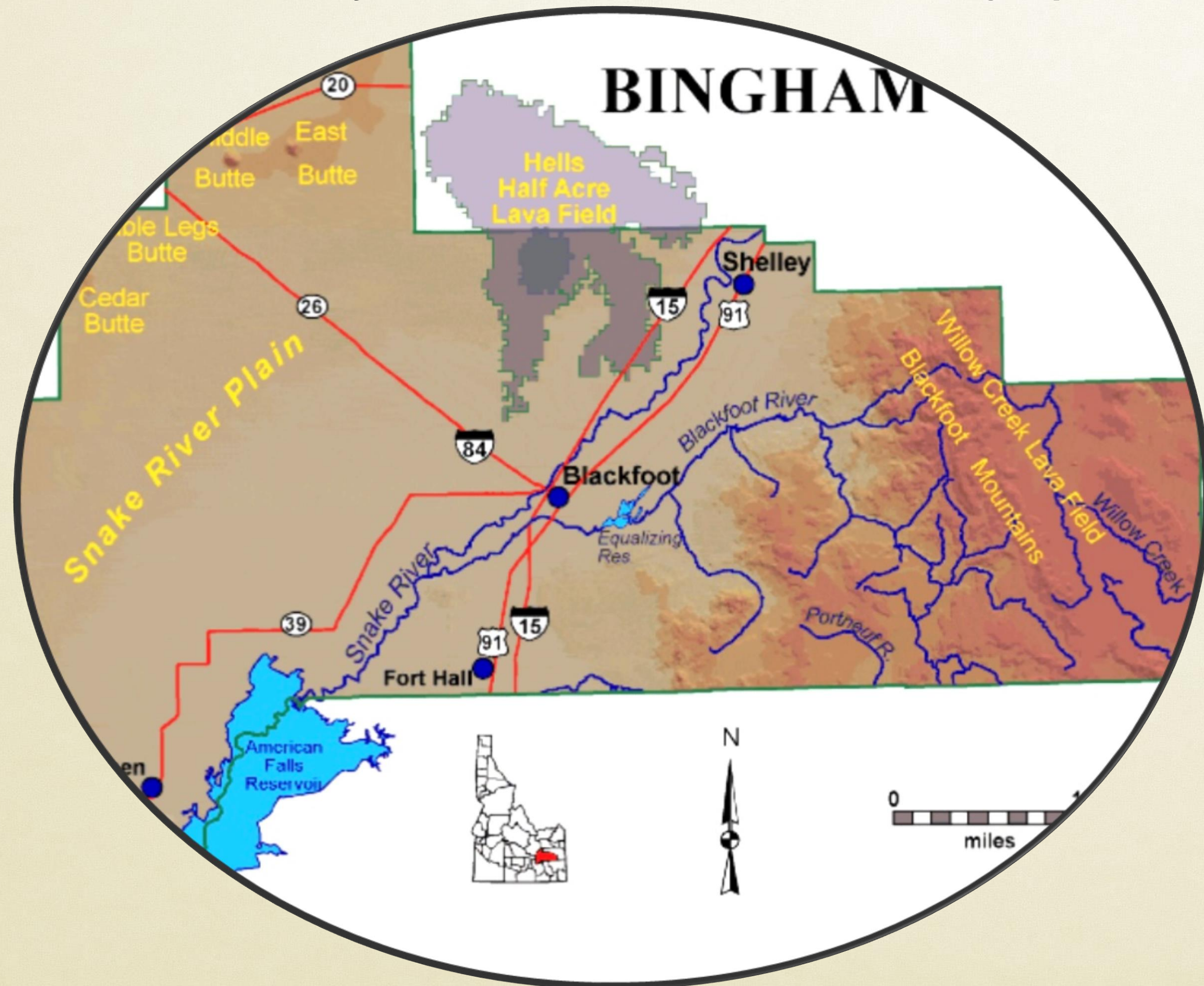


Welcome to Bingham County

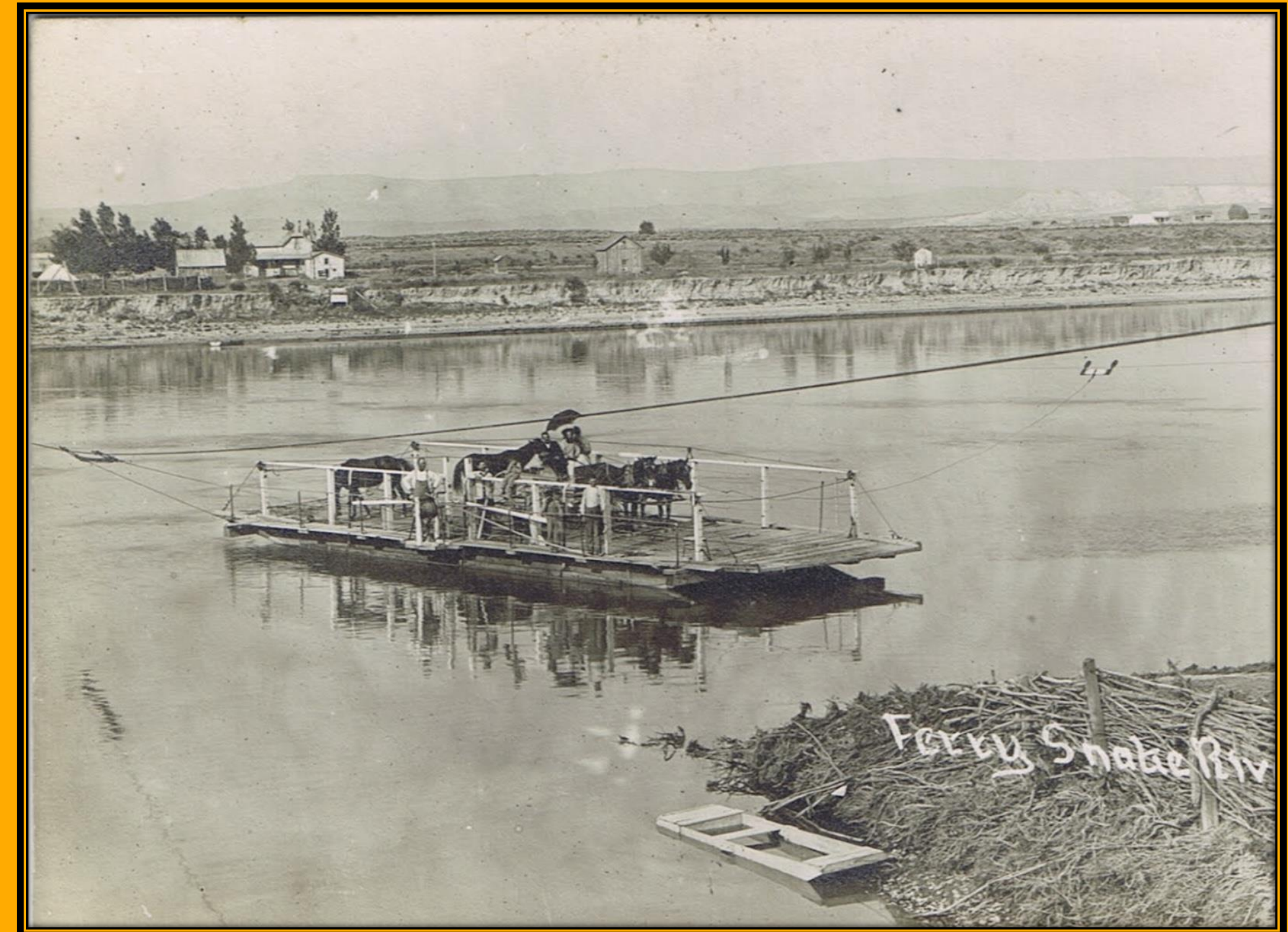
- We are a hidden gem and we are central to everywhere in southeastern Idaho. Let's show you some of our treasures in today's presentation.



A Hidden Gem

Bingham Beginnings

- Created January 13, 1885, five years before Idaho became a state
- Named for Henry H. Bingham who never set foot in this area. He was a Pennsylvania congressman and was a good friend of William Bunn, Idaho's territorial governor.
- As of 2019, 46,811 people reside in the county.
- Total area 2,210 square miles—26 miles is water.
- Snake River and Blackfoot River flow through it.
- Blackfoot is the county seat.



John F. Shelley



North Bingham Park



A pioneer park
recreating the
1890s





- RV Park
- RC Plane Runway
- Boat Ramp
- Golf Course



Shelley Spud Day -- 1927



Lorenzo J. Firth



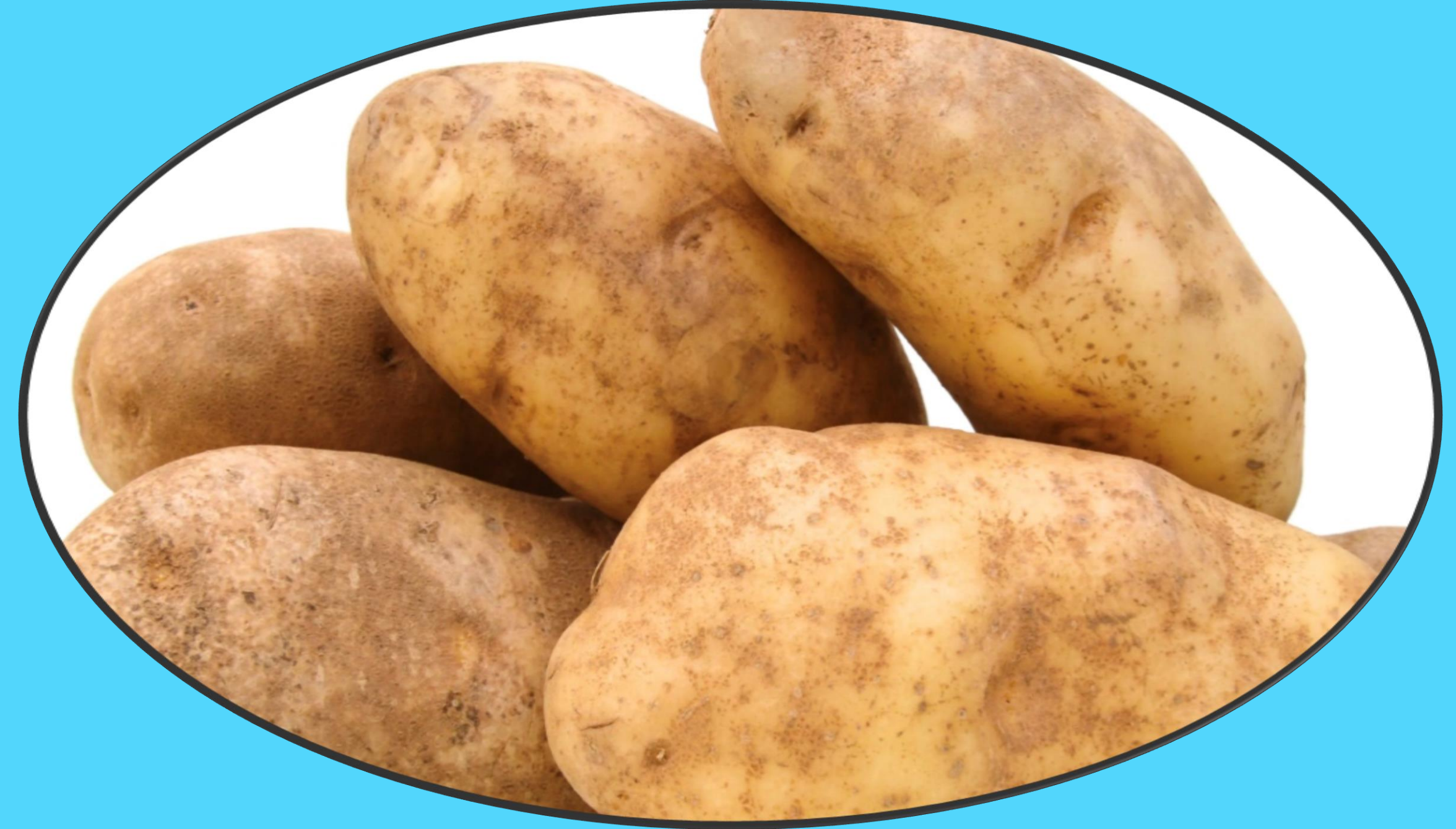
Potato Capital of the World



*Idaho Potato Museum
1988*

World's Largest Potato Crisp

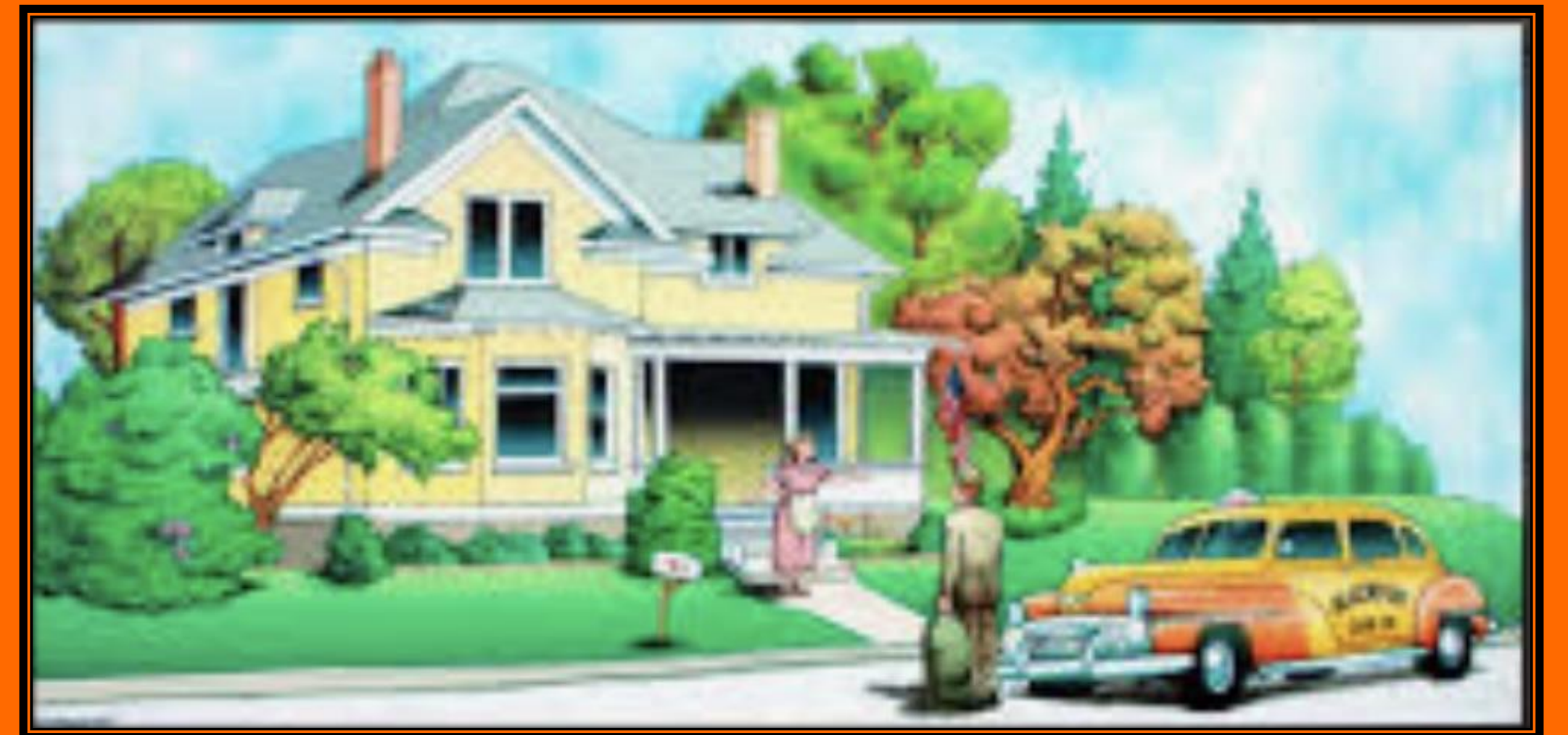




Learn all about spuds
& eat spuds!



Eastern Idaho State Fair 1902



Downtown Murals



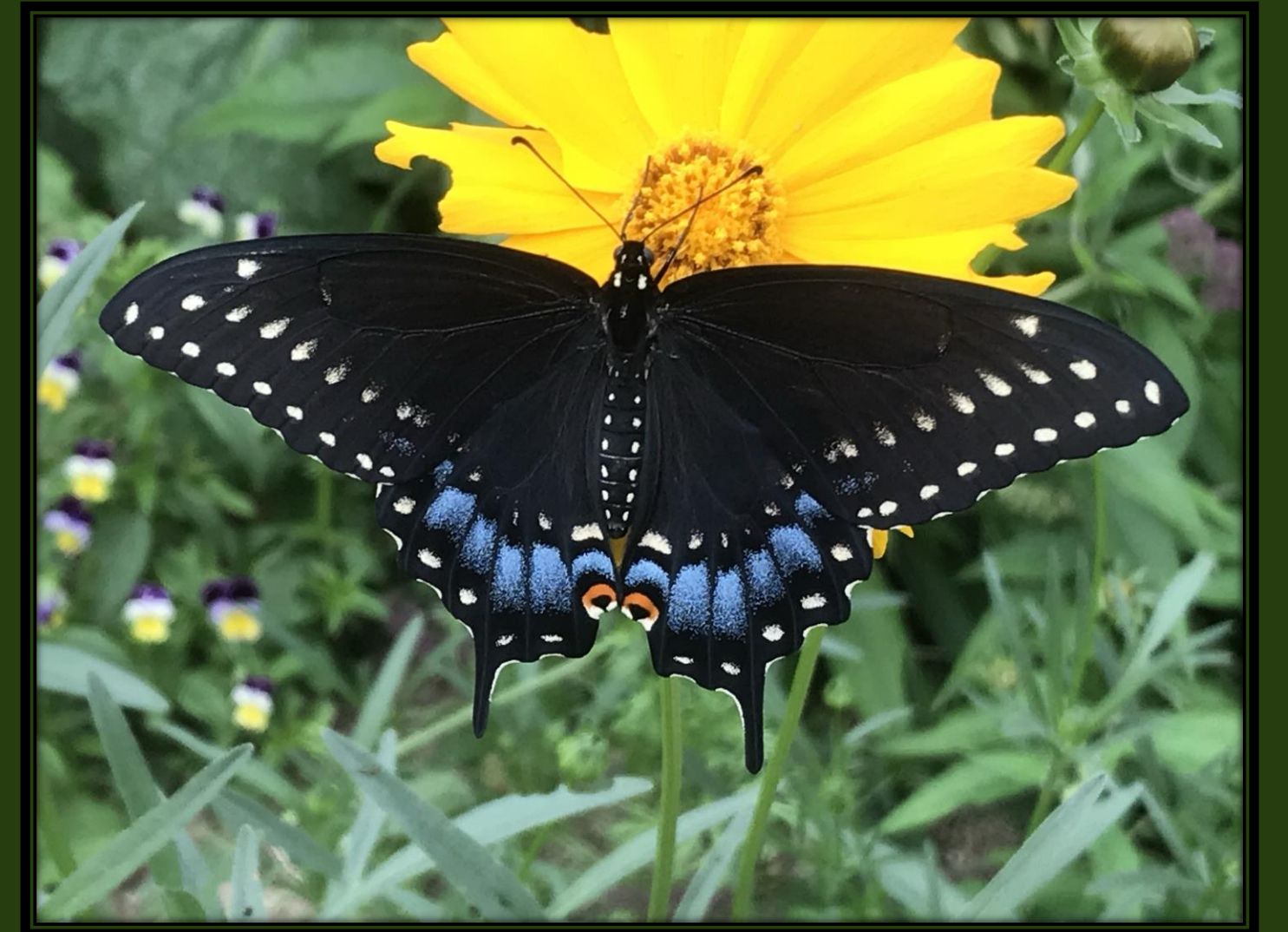
Jensen's Grove

- 7 Miles of paved trail
- 3 Playgrounds
- Reservoir for boating & swimming
- Sandy beach & volley ball
- Picnic pavilions
- Amphitheatre
- Skate Park
- Basketball Court
- Disc Golf Course



The Butterfly Haven -- 2018







Aberdeen, Idaho

named
after

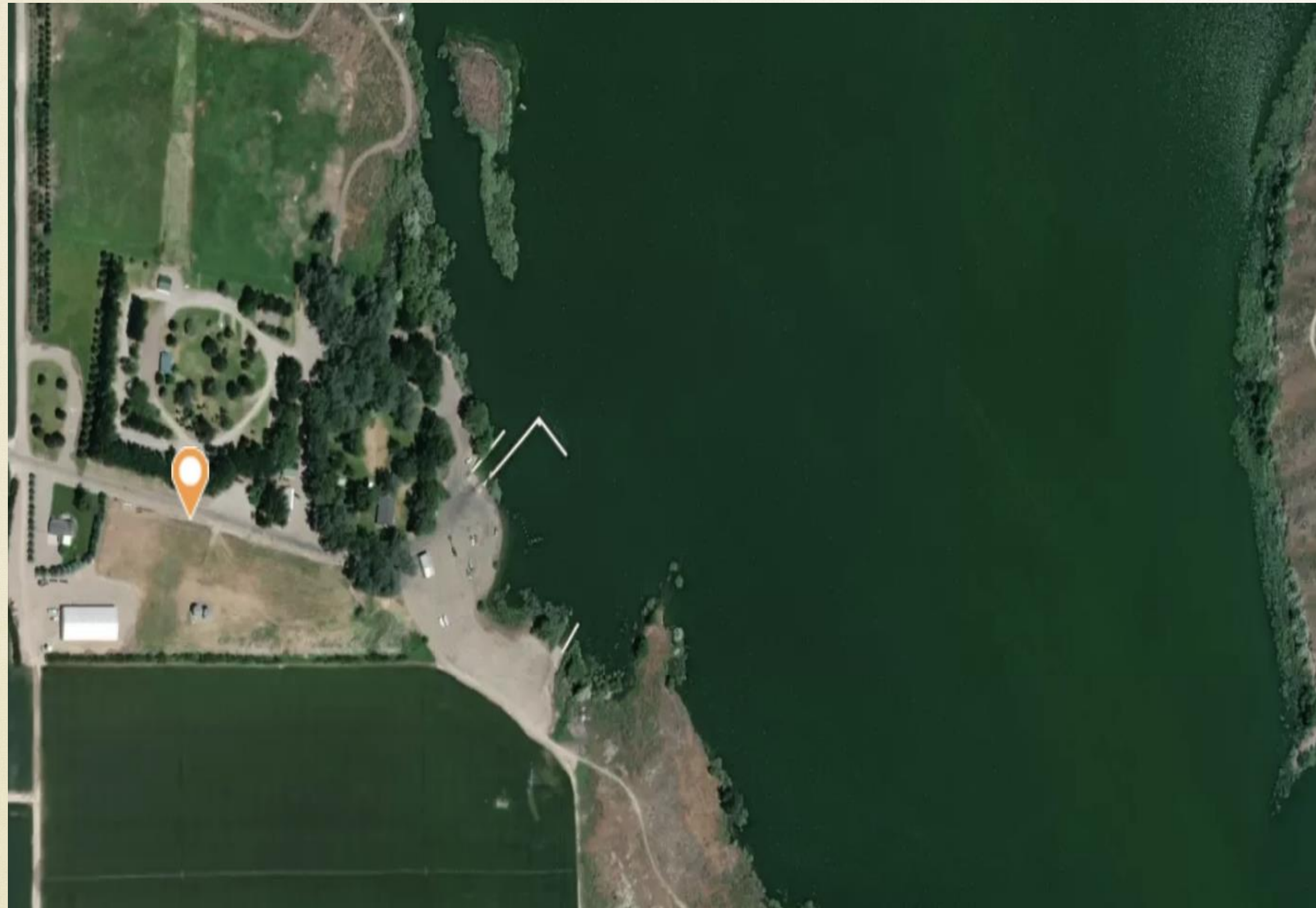
Aberdeen, Scotland



University of Idaho R&E Center



Sportman's Park



American Falls Reservoir



Bingham County Highlights

- 3 golf courses
- 5 paved trails
- 2 RV parks w/dump station
- 1 pioneer park, 4 museums, several private collections
- 1 gun club and range, 1 archery club and range
- 2 historic theaters, 1 state of the art theater
- Numerous sportsman's accesses to the Snake and Blackfoot rivers for fishing and boating
- 6+ lakes, reservoirs and/or ponds
- Numerous rodeos, events and outdoor activities
- Butterfly Haven
- 5 U-pick farms, 1 farm-to-bag potato chip company (Roots in Aberdeen)
- 1 potato vodka distillery
- 1 fish hatchery
- Numerous places to dry camp in the hills and along creeks and rivers
- Bannock-Shoshone Reservation with hotel, casino, museum, and events

Contact Information:
Southeast Idaho High Country

www.idahohighcountry.org

(888) 201-1063

Idaho Potato Museum

208-785-2517

Email: info@idahopotatomuseum.com

The Butterfly Haven

Email: thebutterflyhavenidaho@gmail.com

208-684-3702

Thank You!