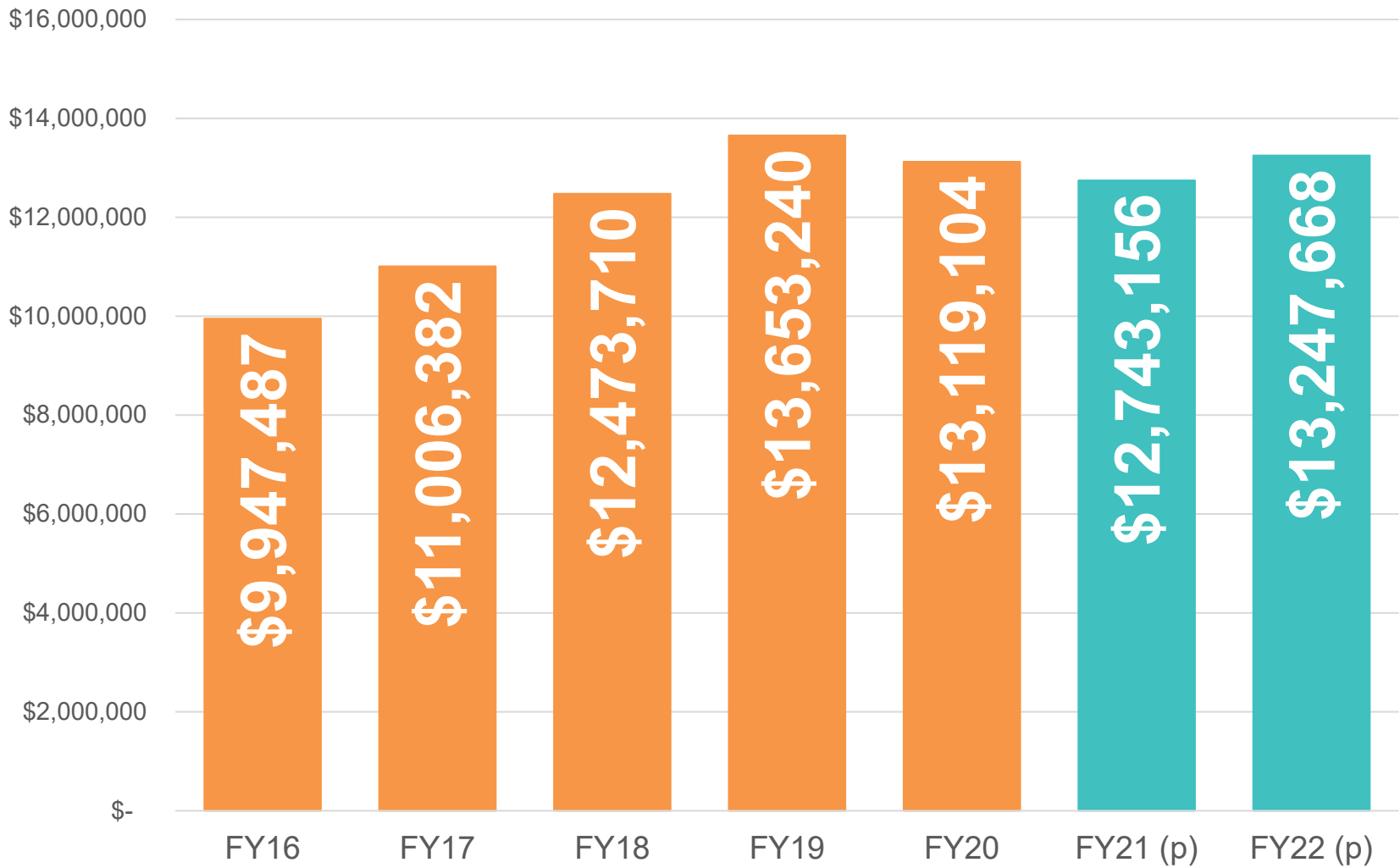


IDAHO TOURISM UPDATE

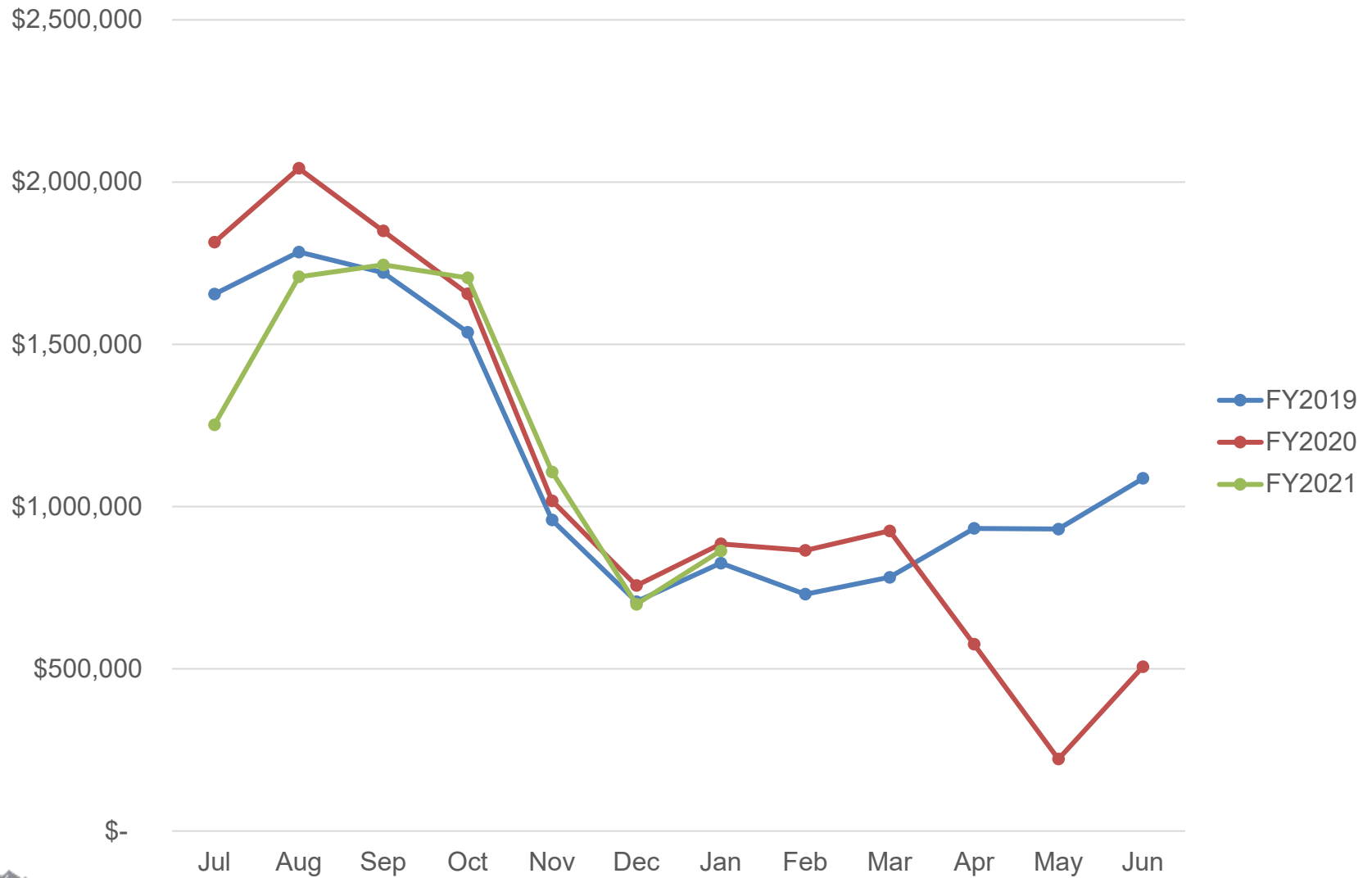
March 2021



Lodging Tax Collections



Monthly Lodging Tax Collections



Regional Highlights

	Aug '20 v. '19	Sep '20 v. '19	Oct '20 v. '19	Nov '20 v. '19	Dec '20 vs. '19	Jan '21 vs. '20
Region 1	1.00%	1.29%	22.16%	24.76%	9.20%	27.45%
Region 2	-18.99%	-4.77%	-27.84%	-21.13%	-31.05%	0.51%
Region 3	-34.04%	-19.01%	-13.51%	-6.41%	-17.91%	-14.93%
Region 4	-2.64%	-0.04%	9.55%	20.46%	-3.88%	14.82%
Region 5	-8.63%	-1.48%	-13.18%	9.42%	-29.24%	-17.34%
Region 6	-12.85%	23.71%	18.13%	26.27%	17.01%	27.72%
Region 7	-22.95%	-7.11%	-4.84%	20.97%	-4.56%	-13.52%
State	-16.37%	-5.67%	2.96%	8.70%	-7.67%	-2.44%

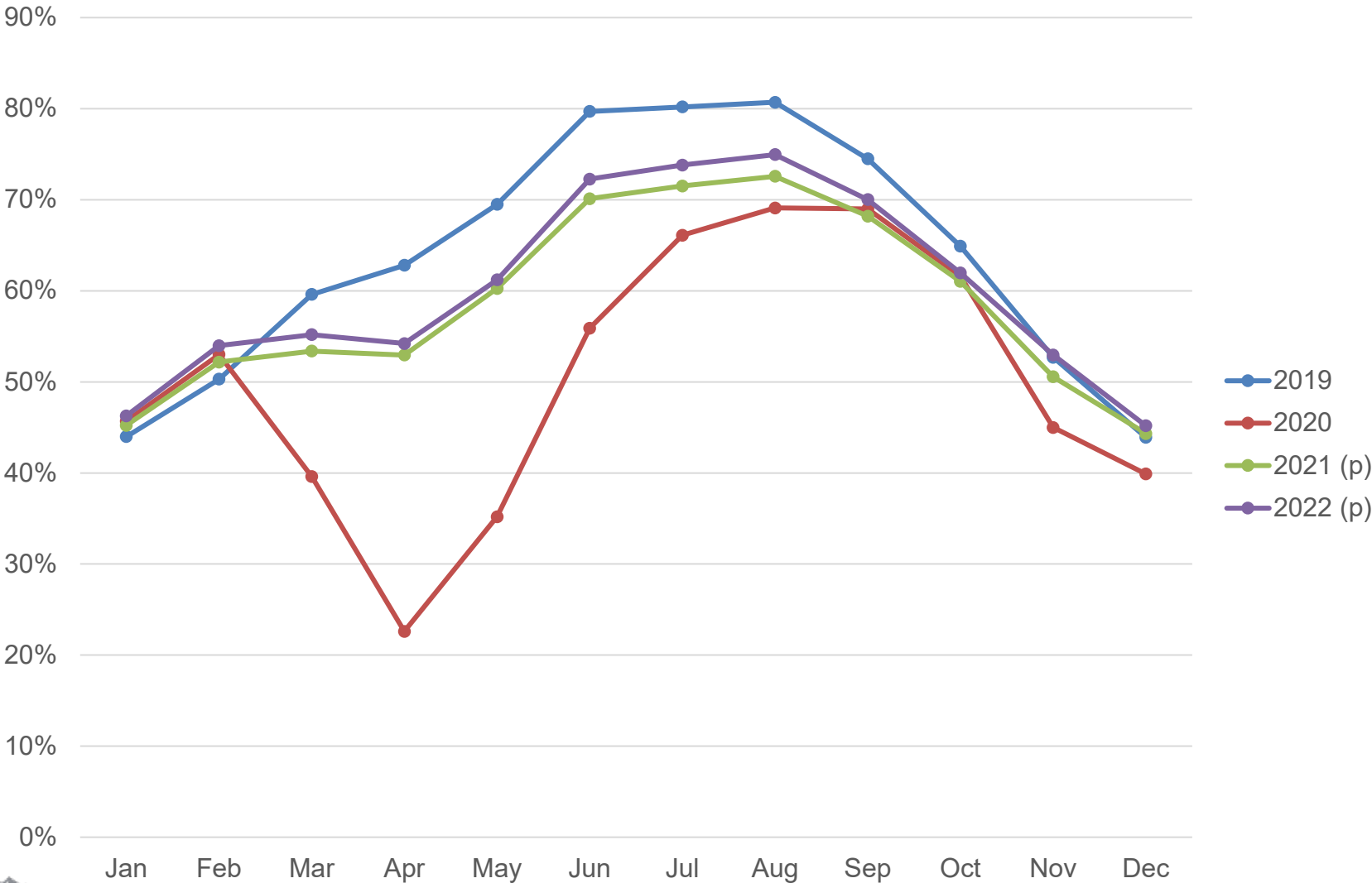
Regional Projections

	FY2020 Total Collections	FY2020 Grant Awards*	FY21 Total Collection Estimate	FY21 vs. FY20 Delta Estimate	FY21 Grant Award Estimate**
Region 1	\$2,510,556	\$1,130,380	\$2,698,848	7.5%	\$1,214,481
Region 2	\$601,566	\$270,704	\$495,690	-17.6%	\$223,061
Region 3	\$4,753,978	\$2,139,301	\$3,831,705	-19.4%	\$1,724,267
Region 4	\$819,595	\$368,817	\$805,662	-1.7%	\$362,548
Region 5	\$760,500	\$342,739	\$657,072	-13.6%	\$295,682
Region 6	\$2,052,124	\$932,153	\$2,136,261	4.1%	\$961,317
Region 7	\$1,469,799	\$683,513	\$1,274,316	-13.3%	\$573,442

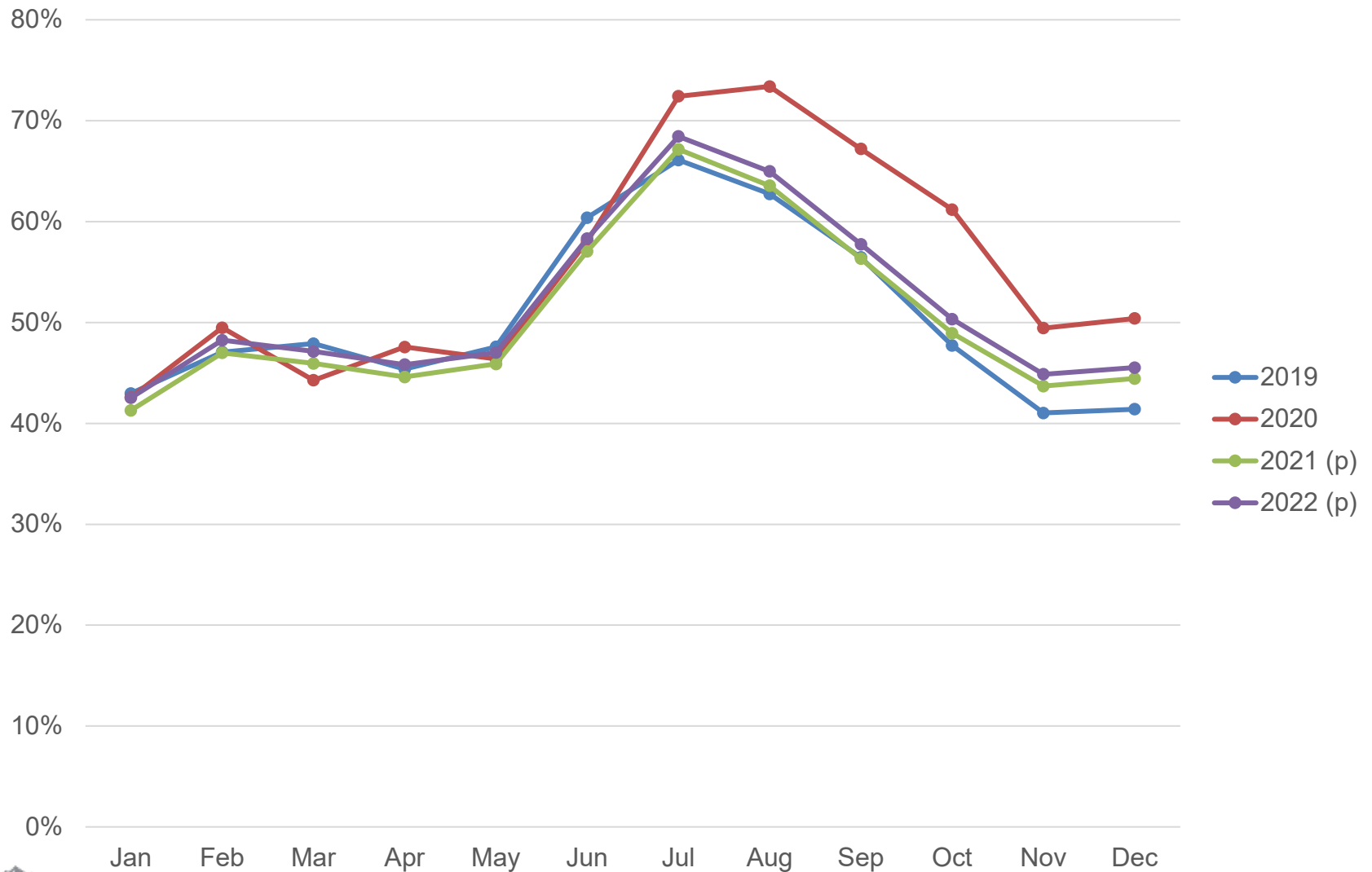
* Includes reversions

** Does not include reversions

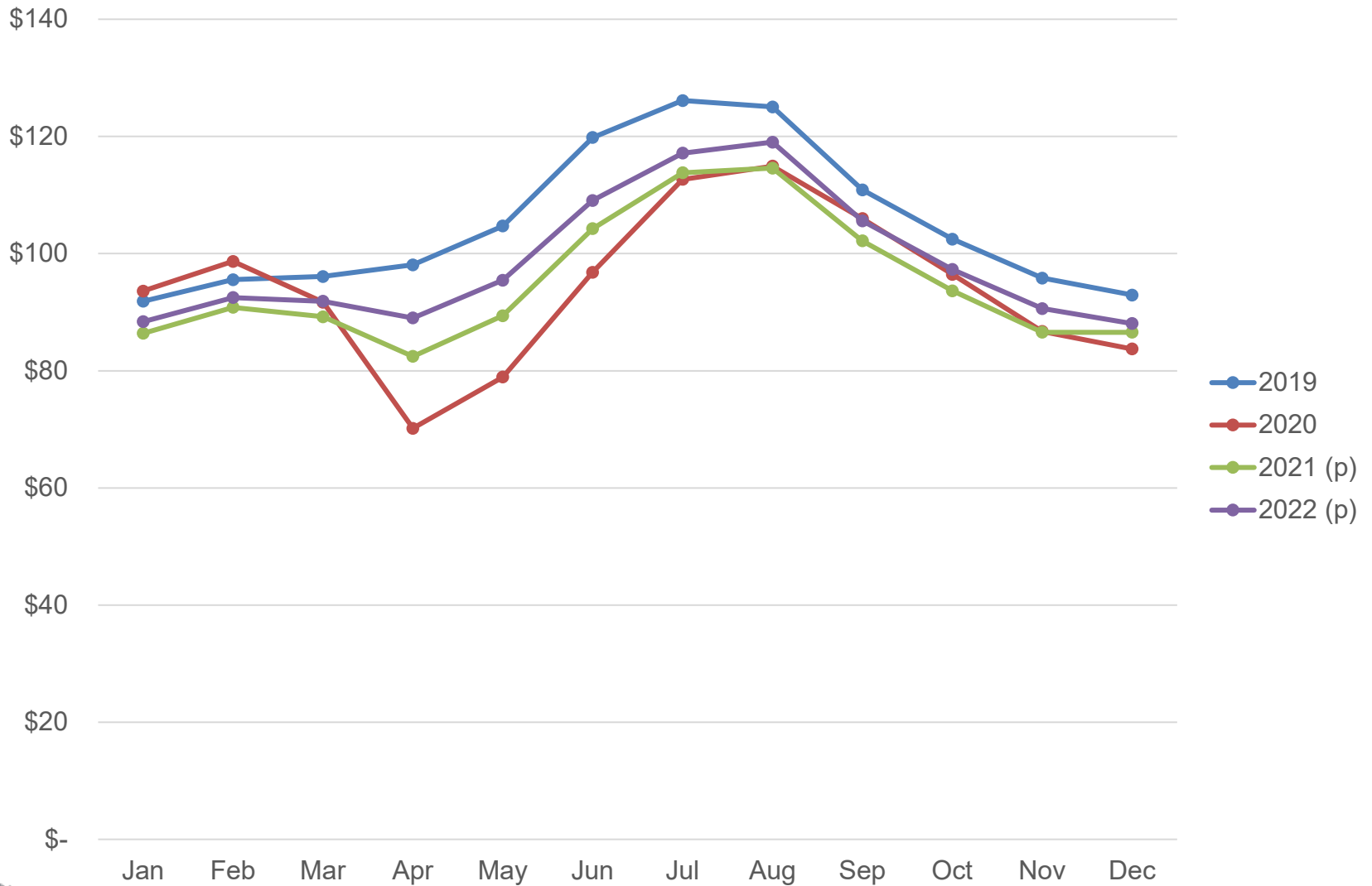
Traditional Lodging Occupancy %



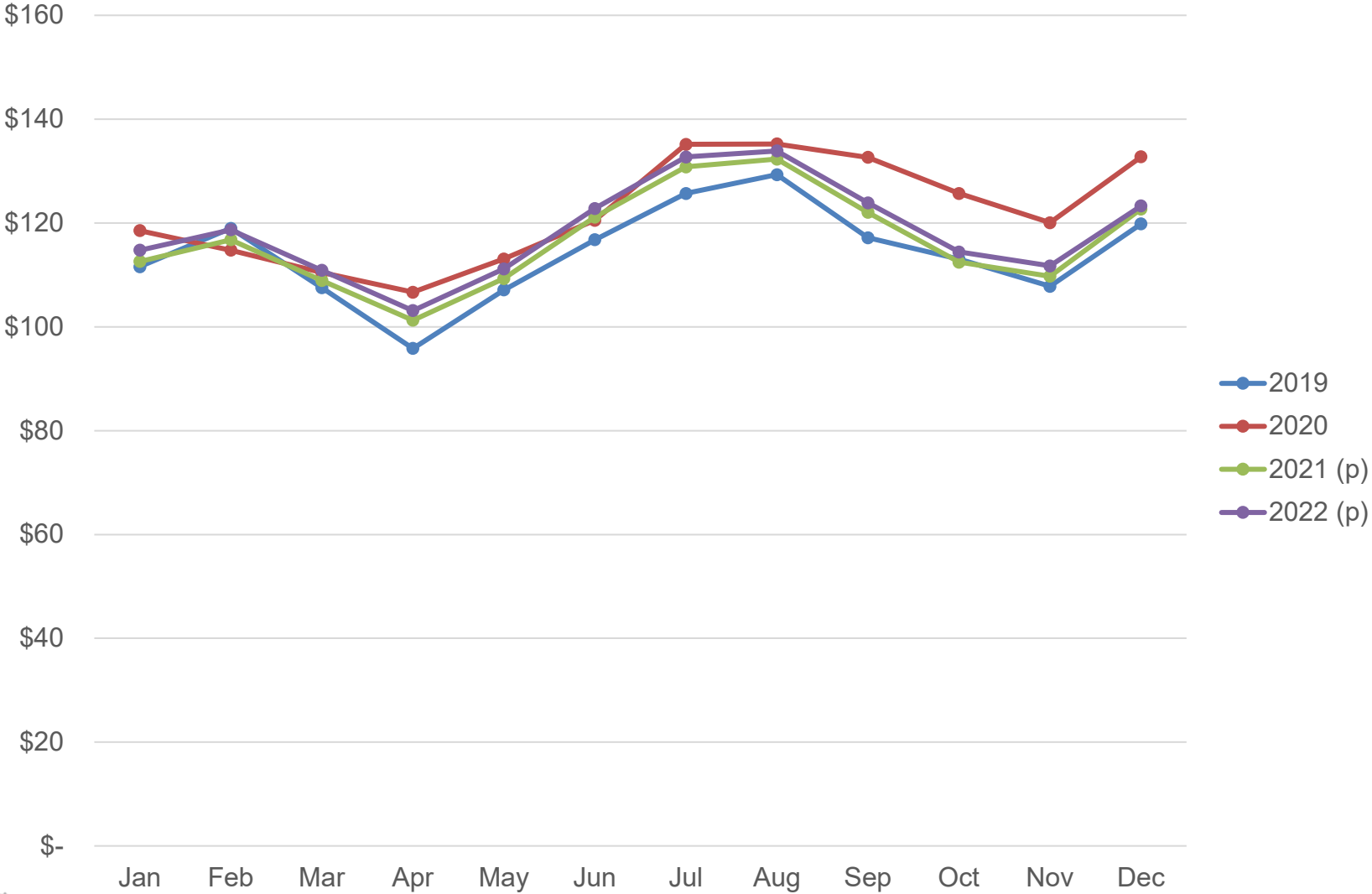
Vacation Rental Occupancy %



Traditional Lodging ADR \$



Vacation Rental ADR \$





commerce.idaho.gov
and visitidaho.org



Idaho Commerce
and Visit Idaho



@idahocommerce
@visitidaho



@visitidaho



Idaho Commerce