



*Chris St. Germaine
and
Jordyn Howell*

March 2021





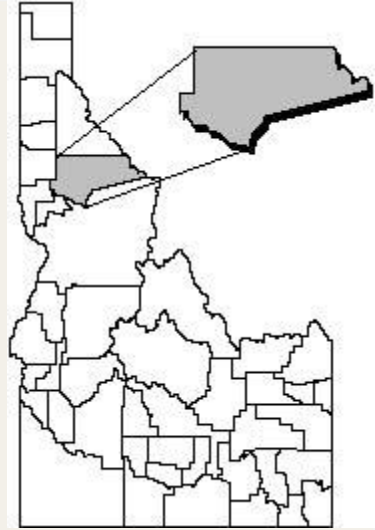
Where & Who are we?

+ History...

https://foresthistor.org/wp-content/uploads/2016/12/mccollister_the-clearwater-river-log-drives.pdf

+ Miners – Loggers – Manufacturers

+ Demographics





Our LAND base

+ Our land is mostly yours

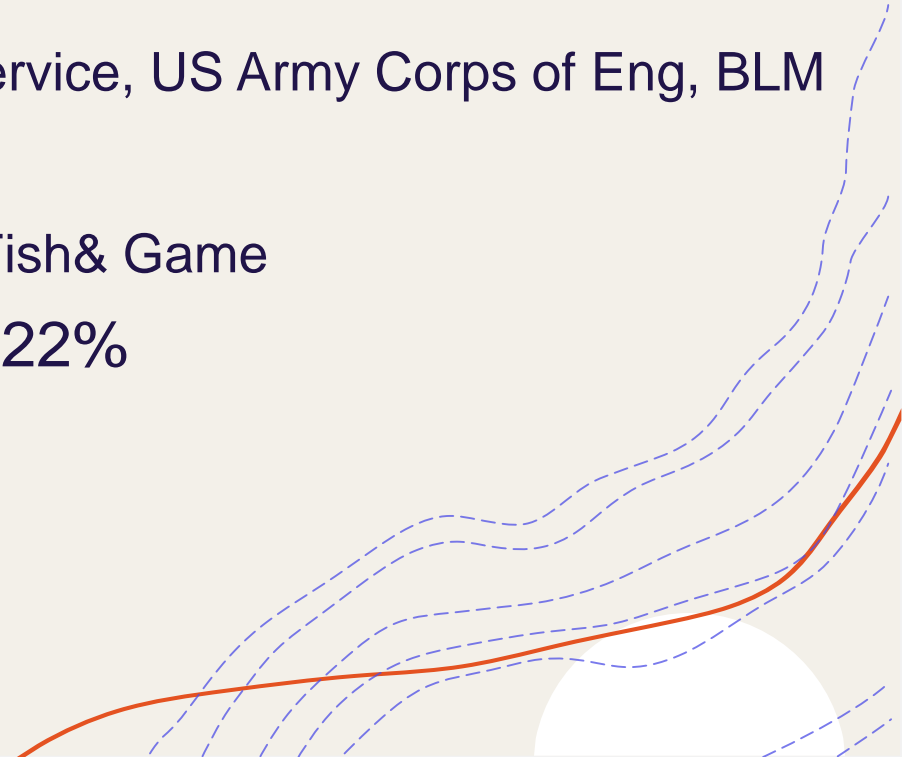
+ Federal 57%

+ US Forest Service, US Army Corps of Eng, BLM

+ State 15%

+ ID Land, ID Fish& Game

+ PotlatchDeltic 22%



Our WATER



+ Steelhead Capital of the World

+ Dworshak

+ Bass

+ Kokanee

+ Small Lakes

+ Cambells Pond, Deer Creek, Deyo Res, Elk River Reservoir

+ Kelly Creek

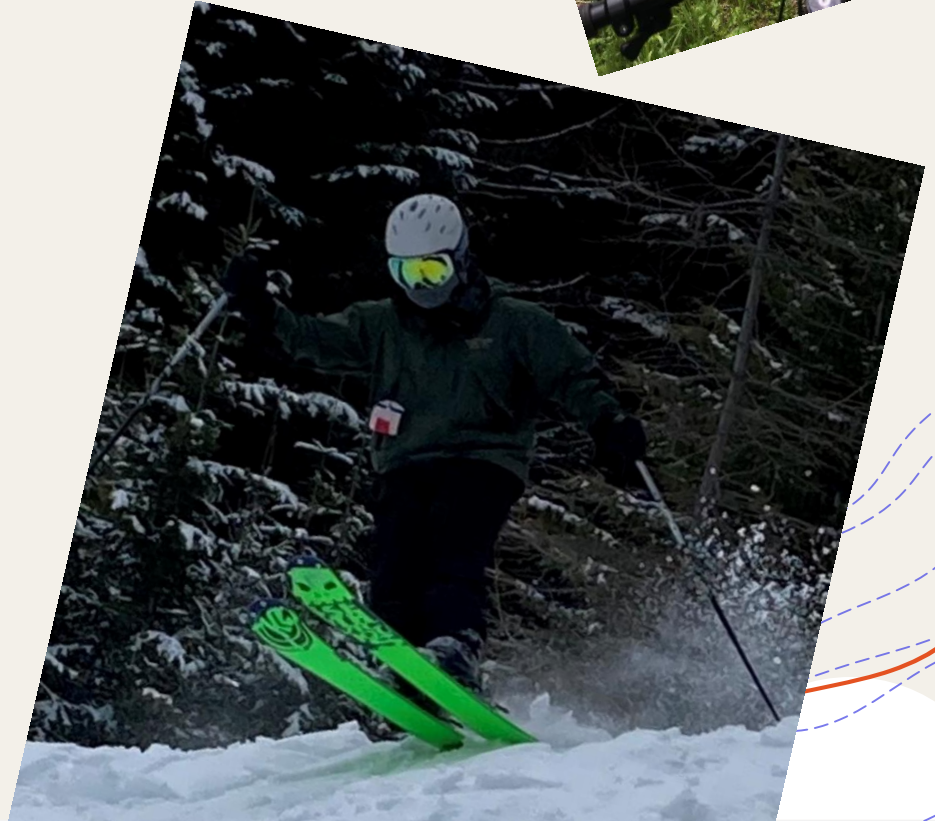




Recreation cont'd

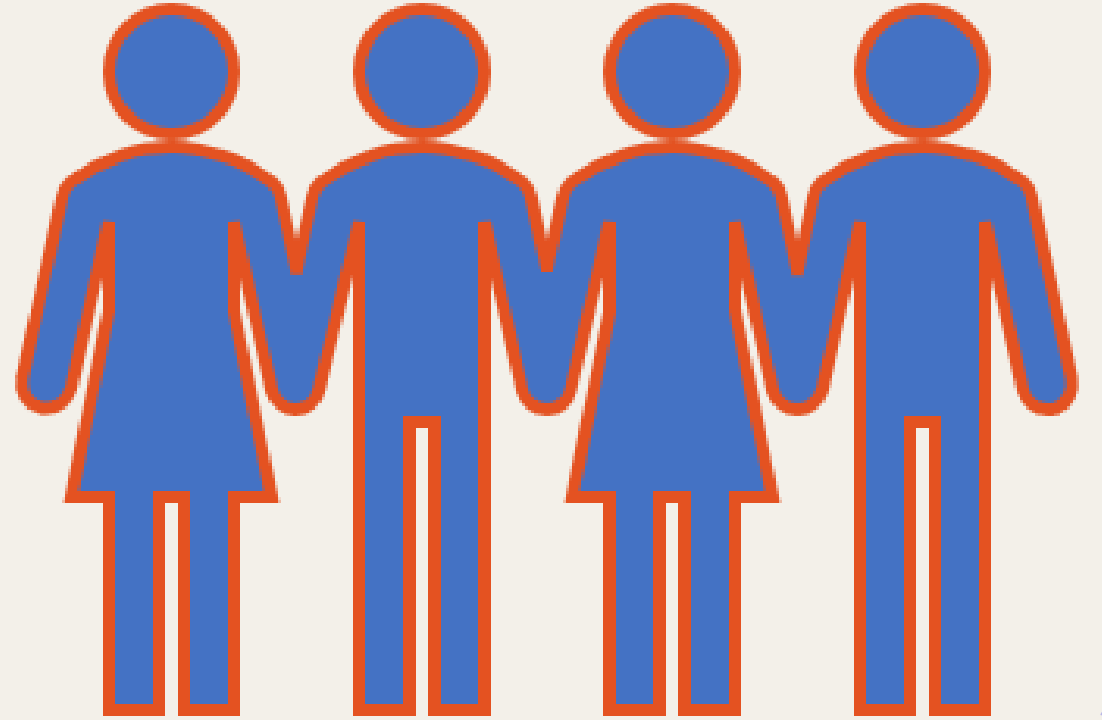
+ Land Based

- + ORMV
- + Camping
- + Hiking
- + Biking
- + Skiing
- + Snowmobiling



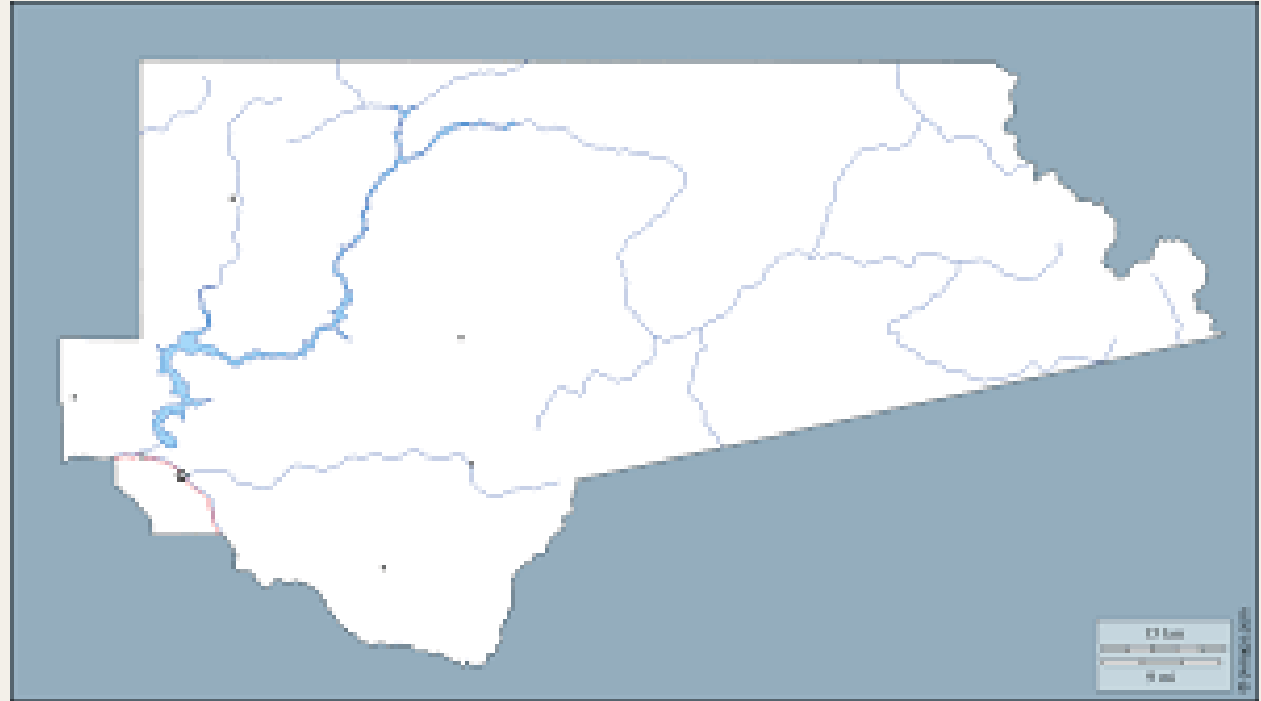
Orofino Chamber of Commerce

- + Support Local Businesses
- + Community Events
- + Time for Change



Clearwater Chamber of Commerce

- +4 Cities
- +Increase
Tourism
- +Retention and
Expansion
- +Advocate for
local benefits



Contact Us!

+ Chris St. Germaine

+ Phone: (208) 476-9829

+ Email: cstgermaine@clearwatercounty.org

+ Jordyn Howell

+ Phone: (208) 476-4335

+ Email: director@orofino.com