

# RIGGINS

## Idaho Opportunity Zone



### OPPORTUNITY ZONE OVERVIEW

This mountainous opportunity zone, with the Main Salmon River running from one end to the other, contains a large portion of public land, including the Nez Perce National Forest. The city of Riggins is nestled deep within a canyon at the confluence of the Main Salmon River

and the Little Salmon River, approximately 150 miles north of Boise, Idaho.

The geographic setting of this zone makes it a prime location for recreation and tourism opportunities, particularly related to fishing or whitewater activities.

### WHAT'S IN THE ZONE?



US Highway 95 runs through Riggins as Main Street



Access to the Salmon River and local hot springs

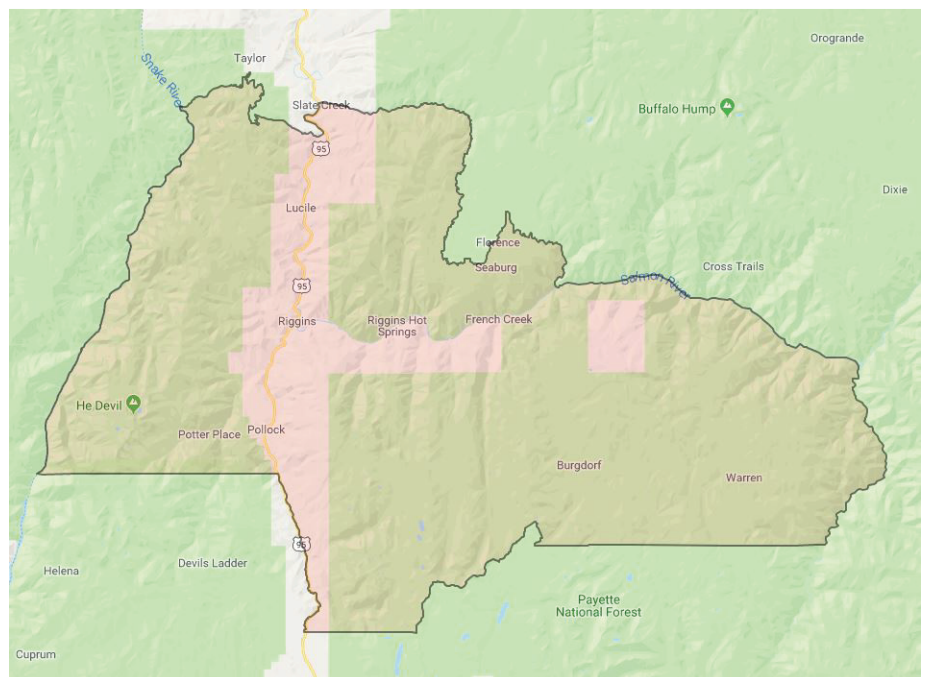


Payette and Nez Perce National Forests

### INVESTMENT OPPORTUNITIES

For details on available investment sites within this opportunity zone, contact Gavin Lewis, Director of the Ida-Lew Economic Development Council

[gavin@ida-lew.org](mailto:gavin@ida-lew.org)  
208.983.8302





# Quick Facts About Riggins, Idaho

## 410

City Population

## 1,244

Census Tract Population

## \$37,832

Median Income

## 27.6%

Population With College Degree

### LOCAL PRIORITIES

US Highway 95 doubles as Main Street in Riggins. Therefore, public parking is a large need for the community, particularly as the city continues to become a popular tourist attraction for fishermen, white water rafters, hikers and outdoor enthusiasts.



Photo by Pat Doney, NBC

Affordable housing for the workforce is also in demand. A number of years ago, a housing development was considered on an old mill site property, but the project did not materialize. The city's water and sewer infrastructure may not currently be adequate to serve a large housing development.



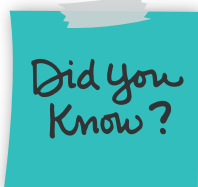
### INVESTMENT RECOMMENDATIONS

The geographic setting of this tract makes it a prime location for recreation and tourism opportunities. Riggins has a growing reputation for its fishing and whitewater rafting, along with all other outdoor attractions and activities that are abundant in the area. The Main Salmon and Little Salmon rivers in close proximity make this a prime location for a swiftwater rescue training site.

Riggins is also a hot spot for the growing of grapes for wine. According to the Idaho Wine Commission, Riggins is one of three areas in the state dubbed an Idaho Growing Region. An initial vision for the Salmon River Wine Initiative was developed in 2013.



The forest products industry would find available resources in the area advantageous to their business. Outdoor equipment and small manufacturing are also considered viable business opportunities in the area.



Riggins is known as the Whitewater Capital of the World, but there's more than water to be seen. Visitors can take advantage of the Seven Devils Mountains and Hells Canyon National Recreation Area southwest of town or cheer on riders at the famous Riggins Rodeo in early May.

FOR INFORMATION USE ONLY. The information and statistics stated herein are based upon publicly available resources developed by other local, state, or federal entities. The Idaho Department of Commerce is not responsible for incorrect information stated herein.